

National University Corporation
Hamamatsu University
School of Medicine
2016



National University Corporation
Hamamatsu University
School of Medicine

1-20-1 Handayama, Higashi-ku, Hamamatsu, Shizuoka 431-3192 Japan

Tel : +81-53-435-2111

<http://www.hama-med.ac.jp/>



CONTENTS

- 1 Philosophy and Objectives, Mission, University Emblem & Logo, History
- 2 Message from the President
- 3 Organization
- 4 Administrative Officers
- 8 Staff
- 9 School of Medicine
- 11 Graduate School
- 13 International Exchanges
- 14 Joint-Use Facilities for Education and Research
- 17 University Library
- 18 University Hospital
- 20 Accounts & Grants
- 21 Campus Map
- 22 Location Map

Philosophy and Objectives of our University at its Establishment

Hamamatsu University School of Medicine seeks to achieve three chief objectives; firstly, to develop excellent clinicians and highly creative researchers; secondly, to promote original research and innovation of medical techniques; and thirdly, to play a leading role in local medical treatments by practicing medicine for the greatest benefits of patients. These goals should contribute to the health and welfare of all mankind.

Mission of our University

The main task of the university is to actively promote the mankind's health, happiness and prosperity through its educational and academic activities. The school, which serves as an educational and research institution for medicine and nursing, aims at teaching and researches on the newest theories and practical applications of them. The school continuously seeks to grow up expert clinicians and nurses and their researchers who are not only highly academic and skilled but also well trained and versed in medical ethics. By doing so, the university plays a leading role in local medicine and health care and helps them develop.

University Emblem & Logo



University Emblem

Mt. Fuji, located in Shizuoka and the symbol of Japan is the motif of the university emblem. Kanji characters for 'Medicine' and 'University' are incorporated into the motif. The light in its lower part portrays The Sea of Enshu and waves, and its protrusion images Hamana Lake. The university emblem is used on diplomas, legal documents, and other materials only at the discretion of the president.



University Logo

The University's initial letter "h" is designed into a mountain-like aqua shape, inspired by Mt. Fuji. It also symbolizes Hamana Lake, The Sea of Enshu, natural water and the essence of life. Together with an orange circle, it implies a mankind with energy, health and dynamism. The university logo captures the University's dedication to the future development of human health and welfare. The logo was created primarily for use on merchandise and promotional items, and is an alternative to the university emblem for graphic design purposes.

History

1974	June 7	Hamamatsu University School of Medicine was founded.
1977	April 18	The University Hospital was established.
1980	April 1	Graduate School of Medicine, Doctoral Degree Program, was established.
1995	April 1	The Faculty of Nursing was established.
1999	April 1	The Master's Degree Program of our Graduate School of Nursing was established.
2004	April 1	The National University Corporation Hamamatsu University School of Medicine started.
2008	April 1	Graduate Course of Midwifery was established.
2015	April 1	Midwifery Course, Master's Degree Program in Nursing was established. (Graduate Course of Midwifery was superseded.)

Message from the President

My name is Dr. Hiroyuki Konno. I am the seventh president of Hamamatsu University School of Medicine, and the third president after it was renamed National University Corporation, Hamamatsu University School of Medicine. (Dr. Toshihiko Terao was the first president, and Dr. Satoshi Nakamura was the second.)

During the past 12 years, under the management of the National University Corporation, we have maintained healthy finances and intensively put resources into medical photonics projects. As a result, our university has continued original research and formed industry/university collaborations with local companies. Furthermore, we have trained excellent doctors, who have contributed to local medical care. Moreover, we boast a high number of successful applicants to the National Examination for Medical Practitioners.

The original goals of our university have been consistent and are as follows:

- (1) To educate our students well and train them to become excellent and highly creative researchers
- (2) To practice medicine on a patient-first policy
- (3) To play a pivotal role in developing community healthcare

We understand that there are many challenging issues to overcome, such as strengthening institutional research, inviting more medical scientists, and solidifying the university's financial base. The third midterm management plan states, "The National University Corporation should maintain a competitive edge and create high added-value." It was set by the Ministry of Education, Culture, Sports, Science and Technology. Simultaneously, our university should operate regional medical services.

To achieve these goals, we will move forward and maximize our currently limited discretion by performing the Plan/Do/Check/Act cycle. We would like to share our plan for the future with you, and we appreciate your cooperation.

Our review of our educational system will include reconsideration of our entrance examinations,

academic grades, Computer Based Testing (CBT), the Objective Structured Clinical Examination, the National Medical Practitioners Qualifying Examination, and postgraduate career paths. To improve the curriculum, we will introduce a new system with detailed evaluation. Furthermore, we will proceed with a new guideline-based policy, which consists of a diploma policy, a curriculum policy, and an admission policy. If this strategy is successful, it will be easy to gather excellent students from across the country.

Overall, the aim of our university is to produce kind, well-trained medical professionals with sophisticated expertise and technical knowledge. In addition, we would like to develop sensibility towards and an understanding of international diversity among our students and young healthcare providers. With respect to medical research, we are going to develop medical photonics (our key field) by utilizing the Preeminent Medical Photonics Education & Research Center. This center was recently created to promote collaborative research between our university and industry. Of course, we spare no effort in pursuing groundbreaking research.

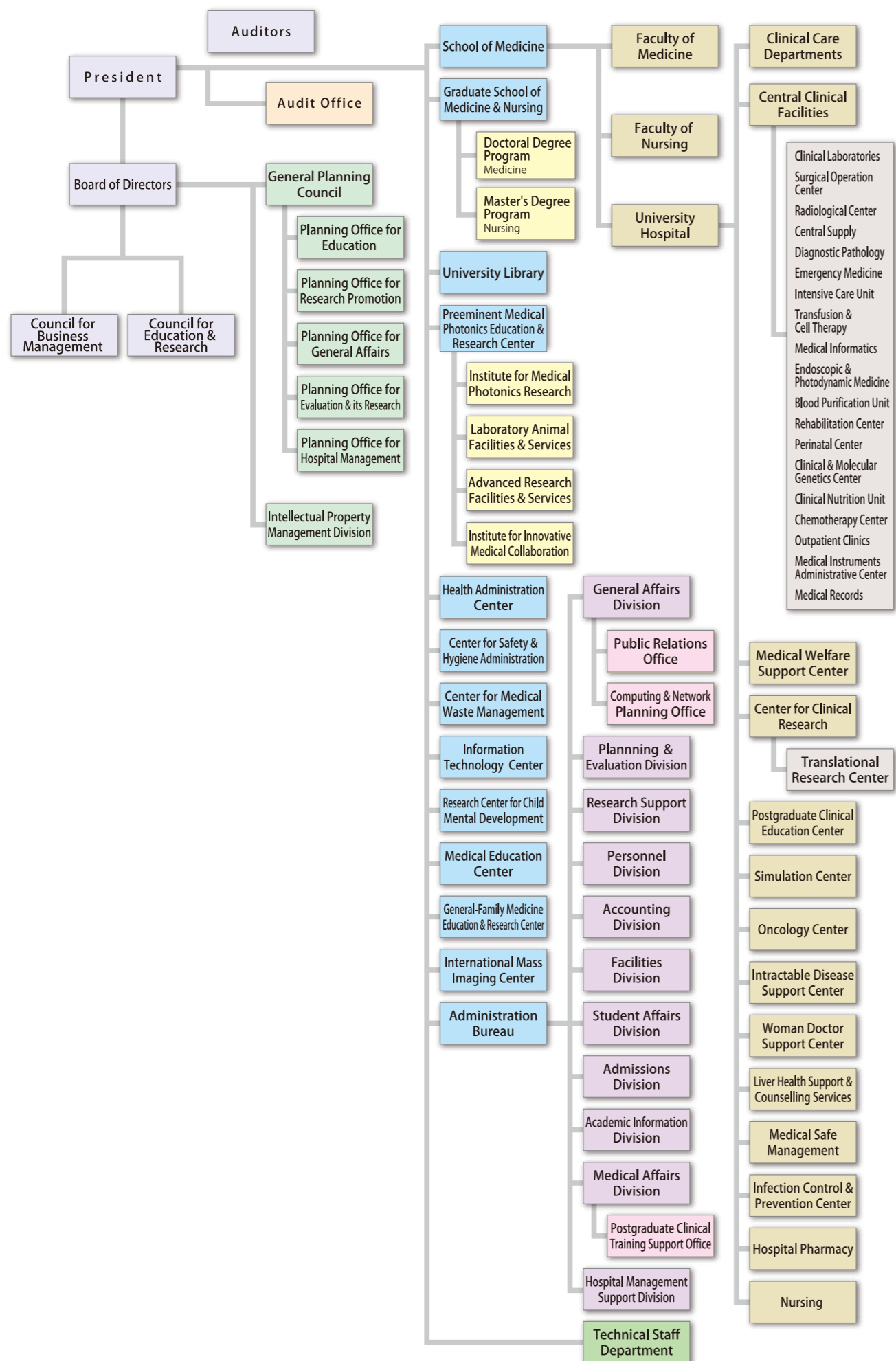
Our most important mission is to make a significant contribution to the community. We offer highly advanced, safe medical care at our core hospital, in cooperation with other public organizations and hospitals.

This is the beginning of a new era. I will operate Hamamatsu University School of Medicine with transparency and equality, and I will be truly focused on coordinating and cooperating with all concerned.

In all of these endeavors, the ultimate goals of Hamamatsu University School of Medicine are to strengthen our contribution to the improvement of human health and well-being, and to expand our efforts in the fields of education, clinical practice, and research. I greatly appreciate your understanding and support.



KONNO Hiroyuki, President



President	KONNO Hiroyuki
Executive Directors/Vice-Presidents	
for Education & Collaboration Development	YAMAMOTO Seiji
for Planning & Evaluation	KANAYAMA Naohiro
Executive Director/Secretary General	
for Finance	MAEDA Hiroshi
Executive Director	
for Administration	HIRUMA Akira
Auditors	
	NISHIYAMA Hitoshi
	MURAMOTO Junko
Vice-Presidents	
for Educational Reform	MIYAJIMA Hiroaki
for Information & Public Relations	URANO Tetsumei
for Research	MINOSHIMA Shinsei
for University Hospital	MATSUYAMA Yukihiro
Special Advisers to the President	
for Curriculum	UMEMURA Kazuo
for Globalization Promotion	FUKUDA Atsuo
Council for Business Management	
President	KONNO Hiroyuki
Executive Director	YAMAMOTO Seiji
Executive Director	KANAYAMA Naohiro
Executive Director	MAEDA Hiroshi
Executive Director	HIRUMA Akira
Vice-President	MATSUYAMA Yukihiro
Chair Person, Board of Directors, Hamamatsu Cultural Foundation	ITO Shuji
Professor Emeritus, Keio University Adviser, Foundation for Promotion of Medical Training	SARUTA Takao
President, Shizuoka Medical Association	SHINOHARA Akira
President & Chief Executive Officer, Hamamatsu Shinkin Bank	MIMURO Kenichiro
COO, The Tokyo Organising Committee of the Olympic and Paralympic Games	NUNOMURA Yukihiro
President, Sakai City Hospital Organization	MONDEN Morito
Professor, Graduate School of Nursing, Chiba University	MASAKI Harue
Council for Education & Research	
President	KONNO Hiroyuki
Executive Director	YAMAMOTO Seiji
Executive Director	KANAYAMA Naohiro
Executive Director	MAEDA Hiroshi
Vice-President for Educational Reform	MIYAJIMA Hiroaki
Vice-President for Information & Public Relations	URANO Tetsumei
Vice-Presidents for Research	MINOSHIMA Shinsei
Vice-Presidents for University Hospital	MATSUYAMA Yukihiro
Professor, Otorhinolaryngology/Head & Neck Surgery	MINETA Hiroyuki
Professor, Clinical Pharmacology & Therapeutics	WATANABE Hiroshi
Professor, Biomedical Informatics, Integrated Human Sciences	TANI Shigeki
Professor, Molecular Biology	KITAGAWA Masatoshi
Professor, Regenerative & Infectious Pathology	IWASHITA Toshhide
Professor, Basic Nursing	NAGATA Toshi
Professor, Clinical Nursing	MORI Keiko

School of Medicine

Basic Sciences, Faculty of Medicine

Integrated Human Sciences	Ethics	Professor	MORISHITA Naoki
	Psychology	Associate Professor	TANAKA Satoshi
	Legal	Professor	OISO Giichiro
	Mathematics	Professor	FURUYA Jun
	Physics	Professor	SASAKURA Hiroyuki
	Chemistry	Professor	FUJIMOTO Chuzo
	Biology	Professor	HARIYAMA Takahiko
	English	Professor	NAKAYASU Minako
	Biomedical Informatics	Professor	TANI Shigeki
Organ & Tissue Anatomy	Professor	SATO Kohji	
Cellular & Molecular Anatomy	Professor	SETOU Mitsutoshi	
Neurophysiology	Professor	FUKUDA Atsuo	
Medical Physiology	Professor	URANO Tetsumei	
Molecular Biology	Professor	KITAGAWA Masatoshi	
Biochemistry	Professor	SAITSU Hirotomo	
Tumor Pathology	Professor	SUGIMURA Haruhiko	
Regenerative & Infectious Pathology	Professor	IWASHITA Toshihide	
Pharmacology	Professor	UMEMURA Kazuo	
Bacteriology & Immunology	Professor	HORII Toshinobu	
Virology & Parasitology	Professor	SUZUKI Tetsuro	
Community Health & Preventive Medicine	Professor	OJIMA Toshiyuki	
Legal Medicine	Professor	WATANABE Kanako	

Faculty of Nursing

Basic Nursing	Professor	WATANABE Yasuhide
	Professor	MIURA Katsutoshi
	Professor	NAGATA Toshi
Clinical Nursing	Professor	KATAYAMA Harumi
	Professor	MORI Keiko
	Professor	SATO Naomi
	Professor	SUZUKI Mizue
	Professor	TAKEDA Eriko
Community Nursing	Professor	YASUDA Takako
	Professor	TATSUMI Asami

Clinical Sciences, Faculty of Medicine

Internal Medicine 1 <small>(Divisions of Gastroenterology, Nephrology & Neurology)</small>	Professor	MIYAJIMA Hiroaki
Internal Medicine 2 <small>(Divisions of Endocrinology & Metabolism, Respiratory & Hepatology)</small>	Professor	SUDA Takafumi
Internal Medicine 3 <small>(Divisions of Cardiology, Hematology & Rheumatology)</small>	Professor	HAYASHI Hideharu
Psychiatry	Professor	YAMASUE, Hidenori
Surgery 1 <small>(Divisions of Cardiovascular, Thoracic, General Endoscopic & Breast Surgery)</small>	Professor	SHIYA Norihiko
Surgery 2 <small>(Divisions of Gastroenterological & Vascular Surgery)</small>	Professor	UNNO Naoki
Neurosurgery	Professor	NAMBA Hiroki
Orthopedic Surgery	Professor	MATSUYAMA Yukihiro
Dermatology	Professor	TOKURA Yoshiki
Urology	Professor	OZONO Seiichiro
Ophthalmology	Professor	HOTTA Yoshihiro
Otorhinolaryngology/ Head & Neck Surgery	Professor	MINETA Hiroyuki
Diagnostic Radiology & Nuclear Medicine	Professor	SAKAHARA Harumi
Radiation Oncology	Professor	NAKAMURA Katsumasa
Anesthesiology & Critical Care Medicine	Professor	NAKAJIMA Yoshiki
Obstetrics & Gynecology	Associate Professor	SUGIHARA Kazuhiro
Pediatrics	Professor	OGATA Tsutomu
Dentistry & Oral & Maxillofacial Surgery	Professor	KATOU Fuminori
Laboratory Medicine	Professor	MAEKAWA Masato
Clinical Pharmacology & Therapeutics	Professor	WATANABE Hiroshi
Emergency & Disaster Medicine	Professor	YOSHINO Atsuto
Clinical Oncology	Professor	YAMADA Yasuhide

Departments by Donation

Regional Medical Management Studies	Professor	YAMAOKA Taiji
Child & Adolescent Psychiatry	Professor	TAKAGAI Shu
Medical Education	Associate Professor	IGARASHI Hiroshi
Regional Neonatal-Perinatal Medicine	Associate Professor	IJIMA Shigeo
Obstetrics, Gynecology & Family Medicine	Professor	SUGIMURA Motoi
Family & Community Medicine	Professor	OKI Yutaka
Geriatric Musculoskeletal Health	Associate Professor	TOGAWA Daisuke

University Library

Director	Professor	URANO Tetsumei
----------	-----------	----------------

Health Administration Center

Head	Professor	HOTTA Yoshihiro
------	-----------	-----------------

Preeminent Medical Photonics Education & Research Center

Director	Professor	MINOSHIMA Shinsei
----------	-----------	-------------------

Institute for Medical Photonics Research

Chairperson	Professor	MAGATA Yasuhiro
Optical Imaging	Associate Professor	YAO Ikuko
Photomedical Genomics	Professor	MINOSHIMA Shinsei
Systems Molecular Anatomy	Professor	SETOU Mitsutoshi
Molecular Imaging	Professor	MAGATA Yasuhiro
Innovative Medical Photonics		
Medical Spectroscopy <small>(Donated Fund Laboratory)</small>	Professor	OKAZAKI Shigetoshi
Biofunctional Imaging	Professor	OUCHI Yasuomi
Biomedical Optics	Professor	HOSHI Yoko

Laboratory Animal Facilities & Services

Chairperson	Professor	KITAGAWA Masatoshi
-------------	-----------	--------------------

Advanced Research Facilities & Services

Chairperson	Professor	FUKUDA Atsuo
-------------	-----------	--------------

Institute for Innovative Medical Collaboration

Chairperson	Associate Professor	ONODERA Yuichiroi
-------------	---------------------	-------------------

Center for Safety & Hygiene Administration

Head	Executive Director	MAEDA Hiroshi
------	--------------------	---------------

Center for Medical Waste Management

Head	Professor	FUJIMOTO Chuzo
------	-----------	----------------

Information Technology Center

Head	Professor	TANI Shigeki
------	-----------	--------------

Research Center for Child Mental Development

Head	Professor	TAKEI Noriyoshi
------	-----------	-----------------

Medical Education Center

Head	Professor	UMEMURA Kazuo
------	-----------	---------------

General-Family Medicine Education & Research Center

Head	Professor	OJIMA Toshiyuki
------	-----------	-----------------

International Mass Imaging Center

Head	Professor	SETOU Mitsutoshi
------	-----------	------------------

Audit Office

Head		TABATA Hiroyuki
------	--	-----------------

Administration Bureau

Executive Secretary	Executive Director	MAEDA Hiroshi
Deputy Secretary of General Affairs & Education		YAMANAKA Kazuyuki
Deputy Secretary of Hospital		OKADA Suguru
General Affairs Division	Manager	OHMORI Tatsuro
Planning & Evaluation Division	Manager	KATSURAYAMA Masahiro
Research Support Division	Manager	OHTA Masato
Personnel Division	Manager	OHTANI Rie
Accounting Division	Manager	SAKAMOTO Kazuhiro
Facilities Division	Manager	MATSUI Hirofumi
Student Affairs Division	Manager	OHKI Seizo
Admissions Division	Manager	NAGAI Kyogo
Academic Information Division	Manager	YOSHIOKA Aya
Medical Affairs Division	Manager	MAEJIMA Koji
Hospital Management Support Division	Manager	SUZUKI Yasumasa

University Hospital

Director

MATSUYAMA Yukihiro

Vice-Directors

for Clinical Practice & Teaching	Professor	SUDA Takafumi
for Management Reform	Professor	OGATA Tsutomu
for Risk Management	Professor	NAKAJIMA Yoshiaki
for Patient Service	Head of Nursing	SUZUKI Mieko

Clinical Care Departments Heads

General Medicine	Professor	MATSUYAMA Yukihiro
Internal Medicine 1	Professor	MIYAJIMA Hiroaki
Division of Gastroenterology	Associate Professor	SUGIMOTO Ken
Division of Nephrology	Senior Assistant Professor	YASUDA Hideo
Division of Neurology	Professor	MIYAJIMA Hiroaki
Internal Medicine 2	Professor	SUDA Takafumi
Division of Endocrinology & Metabolism	Senior Assistant Professor	SASAKI Shigekazu
Division of Respiratory	Professor	SUDA Takafumi
Division of Hepatology	Senior Assistant Professor	KOBAYASHI Yoshimasa
Internal Medicine 3	Professor	HAYASHI Hideharu
Division of Cardiology	Professor	HAYASHI Hideharu
Division of Hematology	Senior Assistant Professor	ONO Takaaki
Division of Immunology & Rheumatology	Senior Assistant Professor	OGAWA Noriyoshi
Psychiatry	Professor	YAMASUE Hidenori
Pediatrics	Professor	OGATA Tsutomu
Surgery 1	Professor	SHIYA Norihiko
Division of Cardiovascular Surgery	Professor	SHIYA Norihiko
Division of Thoracic Surgery	Associate Professor	FUNAI Kazuhito
Division of Breast Surgery	Senior Assistant Professor	OGURA Hiroyuki
Division of General Surgery & Endoscopic Surgery	Senior Assistant Professor	WADA Hidetoshi
Surgery 2	Professor	MATSUYAMA Yukihiro
Division of Esophago-Gastric Surgery	Professor	KAMIYA Kinji
Division of Colorectal Surgery	Professor	KAMIYA Kinji
Division of Hepato-Biliary-Pancreatic Surgery	Senior Assistant Professor	SAKAGUCHI Takanori
Division of Vascular Surgery	Associate Professor	UNNO Naoki
Neurosurgery	Professor	NAMBA Hiroki
Orthopedic Surgery	Professor	MATSUYAMA Yukihiro
Dermatology	Professor	TOKURA Yoshiaki
Urology	Professor	OZONO Seiichiro

Ophthalmology	Professor	HOTTA Yoshihiro
Otorhinolaryngology	Professor	MINETA Hiroyuki
Obstetrics & Gynecology	Professor	MATSUYAMA Yukihiro
Radiology	Professor	SAKAHARA Harumi
Diagnostic Radiology	Professor	SAKAHARA Harumi
Radiation Therapy	Professor	NAKAMURA Katsumasa
Anesthesiology & Critical Care Medicine	Professor	NAKAJIMA Yoshiaki
Dentistry & Oral & Maxillofacial Surgery	Professor	KATOU Fuminori
Rehabilitation	Professor	MIZUSHIMA Takashi
Plastic & Reconstructive Surgery	Professor	FUKAMIZU Hidekazu
Clinical Pharmacology & Therapeutics	Professor	WATANABE Hiroshi
Diagnostic Pathology	Professor	BABA Satoshi
Pediatric Surgery	Associate Professor	KAWAHARA Hisayoshi
Emergency Medicine	Professor	YOSHINO Atsuto

Central Clinical Facilities Heads

Clinical Laboratories	Professor	MAEKAWA Masato
Surgical Operation Center	Professor	NAKAJIMA Yoshiaki
Radiological Center	Professor	SAKAHARA Harumi
Central Supply	Professor	SHIYA Norihiko
Diagnostic Pathology	Professor	BABA Satoshi
Emergency Unit	Professor	YOSHINO Atsuto
Intensive Care Unit	Associate Professor	DOI Matsuyuki
Transfusion & Cell Therapy	Professor	TAKESHITA Akihiro
Medical Informatics	Professor	KIMURA Michio
Endoscopic & Photodynamic Medicine	Professor	MINETA Hiroyuki
Blood Purification Unit	Professor	KATO Akihiko
Rehabilitation Center	Professor	MIZUSHIMA Takashi
Perinatal Center	Professor	ITOH Hiroaki
Clinical & Molecular Genetics Center	Professor	OGATA Tsutomu

Clinical Nutrition Unit	Professor	KATO Akihiko
Chemotherapy Center	Professor	YAMADA Yasuhide
Outpatient Clinics	Professor	OGATA Tsutomu
Medical Instruments Administrative Center	Professor	NAKAJIMA Yoshiaki
Medical Records	Professor	HOTTA Yoshihiro

Medical Welfare Support Center

Head Professor KOBAYASHI Toshihiko

Center for Clinical Research

Head Professor UMEMURA Kazuo

Clinical Education Center

Head Professor SUDA Takafumi

Simulation Center

Head Associate Professor IGARASHI Hiroshi

Oncology Center

Head Professor YAMADA Yasuhide

Intractable Disease Support Center

Head Professor MIYAJIMA Hiroaki

Woman Doctor Support Center

Head Professor TOKURA Yoshiaki

Liver Health Support & Counselling Services

Head Senior Assistant Professor KOBAYASHI Yoshimasa

Medical Safe Management

Head Professor NAKAJIMA Yoshiaki

Infection Control & Prevention Center

Head Professor MAEKAWA Masato

Hospital Pharmacy

Head Professor KAWAKAMI Junichi

Nursing

Head SUZUKI Mieko

STAFF

Classification		President	Executive Directors	Auditors	Professors	Associate Professors	Senior Assistant Professors	Assistant Professors	Total	Clerks & Technicians	Grand Total
Administration Bureau	Male	1	4	1					6	103	109
	Female			1					1	49	50
School of Medicine	Male				45	26	2	72	145	6	151
	Female				9	9	1	26	45	5	50
University Hospital	Male				3	12	36	37	88	161	249
	Female						4	6	10	637	647
Preeminent Medical Photonics Education & Research Center	Male				4	2		8	14	10	24
	Female				1	2		3	6	6	12
Health Administration Center	Male						1		1		1
	Female									1	1
Center for Medical Waste Management	Male									2	2
	Female									1	1
Research Center for Child Mental Development	Male				1	1		1	3		3
	Female							3	3		3
Intellectual Property Management Division	Male							1	1		1
	Female										
Total	Male	1	4	1	53	41	39	119	258	282	540
	Female			1	10	13	5	38	65	699	764
	Total	1	4	2	63	54	44	157	323	981	1,304

Data on May 1, 2016

Classification	Senior Residents	Junior Residents	Total
Male	79	19	98
Female	38	13	51
Total	117	32	149

Data on May 1, 2016



SCHOOL OF MEDICINE

Faculty of Medicine

The Faculty of Medicine aims to grow physicians and medical researchers who have extensive medical knowledge, skills and well-rounded humanity. The faculty strives to contribute to the development of medicine, medical care, and to the enhancement of human health and welfare.



Based on our University's policy, many excellent clinicians, who graduated from our University, are contributing to medical treatments both in Shizuoka Prefecture and nationwide. Our graduates are also engaging in state-of-the-art research at our University. New technologies are also being adopted by the Faculty in fields such as treatments of cancers and the development of advanced diagnostic techniques. In particular, The Photon Medical Research Center was established for the promotion of advanced studies in the field of medical photonics.

Finally, our graduates play active roles not only as clinicians, medical researchers and medical educators, but also as industrial physicians and medical welfare administrators.

Faculty of Nursing

The Faculty of Nursing aims to grow talented people who play active roles in the fields of practical nursing skills, nursing research, and education locally and globally. The faculty strives to contribute to the development of the nursing science and enhancement of human health and welfare.



Students develop their scientific thinking and kind consideration for others during 4 years of student life. Graduates can continue their professional development in the Master's Program of the Graduate School of Nursing to pursue careers in nursing education and as researchers.

Admissions and the Present Number of Students

School			1st yr.	2nd yr.	3rd yr.	4th yr.	5th yr.	6th yr.	Total
Faculty of Medicine	Admission Quota 120 (5)	Male	67	78 (4)	82 (4)	84 (4)	78 (4)	75 (3)	464 (19)
	Capacity 715 (25)	Female	51	44 (1)	45 (2)	42 (1)	39 (1)	48 (3)	269 (8)
		Total	118	122 (5)	127 (6)	126 (5)	117 (5)	123 (6)	733 (27)
Faculty of Nursing	Admission Quota 70 (10)	Male	5	1	6 (3)	7 (1)			19 (4)
	Capacity 260 (20)	Female	59	63	68 (7)	58 (9)			248 (16)
		Total	64	64	74 (10)	65 (10)			267 (20)

The numbers in () for the Faculty of Medicine indicate mid-course entry admissions to 2nd-year included in total.
The numbers in () for the Faculty of Nursing indicate mid-course entry admissions to 3rd-year included in total.

Data on May 1, 2016

Research Students

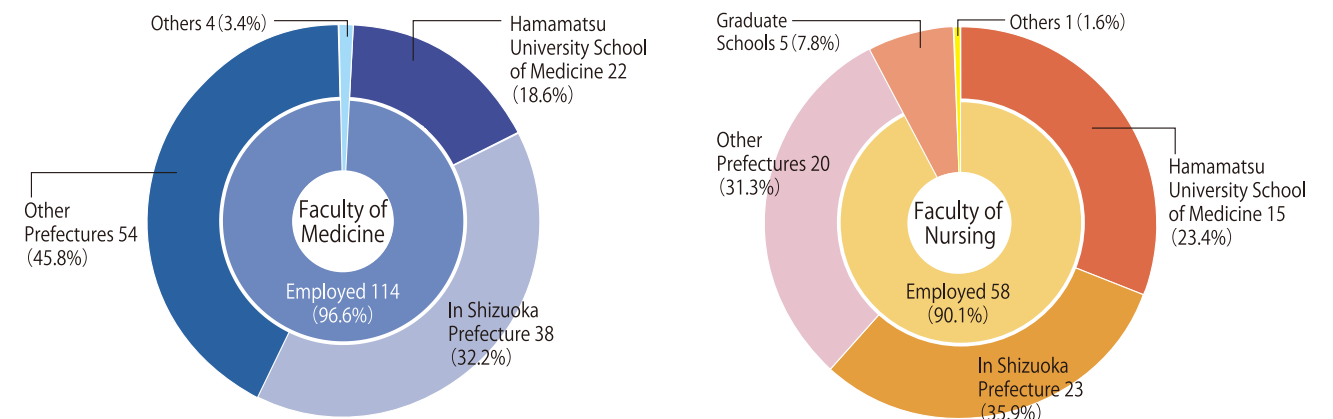
	2016
Male	4
Female	3
Total	7

Data on May 1, 2016

Number of Graduates

Classification	Faculty of Medicine							Faculty of Nursing						
	1979~2010	2011	2012	2013	2014	2015	Total	1998~2010	2011	2012	2013	2014	2015	Total
Male	2,317	76	67	75	73	82	2,690	40	1	5	5	5	3	59
Female	848	26	26	25	32	36	993	853	67	67	61	60	61	1,169
Total	3,165	102	93	100	105	118	3,683	893	68	72	66	65	64	1,228

Locations of Graduates (Class 2015)



Success Rates in the National Medical Practitioners Qualifying Examination

Classification	New Graduates			Reexaminees			Total			National Ranking
	Applicants	Passed	Rate of Success	Applicants	Passed	Rate of Success	Applicants	Passed	Rate of Success	
106th 2012	102	100	98.0	3	3	100.0	105	103	98.1	2
107th 2013	93	87	93.5	2	1	50.0	95	88	92.6	28
108th 2014	100	99	99.0	7	6	85.7	107	105	98.1	6
109th 2015	105	105	100.0	2	1	50.0	107	106	99.1	1
110th 2016	118	114	96.6	1	0	0.0	119	114	95.8	13

Success Rates in the National Medical Examinations for Public Health Nursing and Nursing

Classification	Public Health Nursing			Classification	Nursing		
	Applicants	Passed	Rate of Success		Applicants	Passed	Rate of Success
98th 2012	69	67	97.1	101st 2012	58	58	100.0
99th 2013	73	72	98.6	102nd 2013	62	62	100.0
100th 2014	66	63	95.5	103rd 2014	57	57	100.0
101st 2015	66	66	100.0	104th 2015	54	54	100.0
102nd 2016	64	64	100.0	105th 2016	55	55	100.0

GRADUATE SCHOOL

Graduate School of Medicine Doctoral Degree Program

This doctoral program aims to grow both basic medical researchers and clinical scientists who will take the leadership on global bases. Based on taking a broad range of classes including "advanced photo-medicine", the students for medical researchers should acquire high-level expert knowledge and skills to perform creative research.

On the other hand, the students for clinical scientists should acquire ability to apply the research mind to their own clinical practice.



Graduate School of Nursing Master's Degree Program

This program aims to grow highly advanced nursing specialists, pedagogues, and researchers who have scientific thought, ability to notice and solve the problems, on the basis of fundamental capability for high-quality nursing knowledge and skills so far acquired.

The Midwifery Course was launched in 2015, replacing the 1-year Graduate Course of Midwifery. The graduates of the Midwifery Course gain a Master's degree and are qualified to take the National Midwifery Examination in Japan.



Admissions and the Present Number of Students

Doctoral Degree Program

Major			1st yr.	2nd yr.	3rd yr.	4th yr.	Total
Advanced Photo Medicine	※Admission Quota 11	Male	—	—	—	0	0
	※Capacity 44	Female	—	—	—	1	1
		Total	—	—	—	0	0
Integrated Functional Medicine	※Admission Quota 5	Male	—	—	—	0	0
	※Capacity 20	Female	—	—	—	0	0
		Total	—	—	—	0	0
Frontier Medicine	※Admission Quota 8	Male	—	—	—	5	5
	※Capacity 32	Female	—	—	—	0	0
		Total	—	—	—	5	5
Infectious Disease Control & Preventive Medicine	※Admission Quota 6	Male	—	—	—	2	2
	※Capacity 24	Female	—	—	—	2	2
		Total	—	—	—	4	4
Medicine	Admission Quota 30	Male	25	31 (2)	25 (1)	35 (2)	116 (5)
	Capacity 120	Female	4	6	8	14 (1)	32 (1)
		Total	29	37 (2)	33 (1)	49 (3)	148 (6)

The numbers in () indicate those students who enrolled in October included in total.

※The upper limit of places number before the fiscal year 2011.

Data on May 1, 2016

Master's Degree Program

Major			1st yr.	2nd yr.	Total
Nursing	Admission Quota 16	Male	2	4 (3)	6 (3)
	Capacity 32	Female	14	32 (17)	46 (17)
		Total	16	36 (20)	52 (20)

The number in () indicates Long-term Study Students included in total.

Data on May 1, 2016

Degrees Awarded

	1983~2008	2010	2011	2012	2013	2014	2015
Ph. D. (doctoral course)	578	27	26	24	28	22	27
Ph. D. (thesis only)	477	8	11	9	7	5	9
Master of Nursing (M.A.)	128	15	23	8	11	13	13
Total	1,183	50	60	41	46	40	49

Data on May 1, 2016

Research Students

	2015
Male	29
Female	6
Total	35

Data on May 1, 2016

Success Rates in the National Medical Examinations for Midwifery

Classification	New Graduates		
	Applicants	Passed	Rate of Success
95th 2012	15	15	100.0
96th 2013	16	16	100.0
97th 2014	16	16	100.0
98th 2015	16	16	100.0
99th 2016	N/A		



INTERNATIONAL EXCHANGES

Universities with Agreements for Cooperation

University (COUNTRY)	Date of Agreement Signed	Cooperation Contents
China Medical University (CHINA)	1988. 4.29	Sister School
Kyungpook National University School of Medicine (KOREA)	1992. 9. 7	Academic Exchange
Kyungpook National University College of Nursing (KOREA)	2005. 9.23	Academic Exchange
Shanghai Jiao Tong University School of Medicine (CHINA)	2000. 3.24	Academic Exchange
Faculty of Medicine, Albert-Ludwigs University of Freiburg (GERMANY)	2003. 6.30	Academic Exchange
Henan College of Traditional Chinese Medicine (CHINA)	2003.12. 8	Academic Exchange
Medical University of Bialystok (POLAND)	2004. 4.19	Academic Exchange
University of Dhaka (BANGLADESH)	2004.11.12	Academic Exchange
Shahjalal University of Science and Technology (BANGLADESH)	2004.11.12	Academic Exchange
Bangabandhu Sheikh Mujib Medical University (BANGLADESH)	2004.11.12	Academic Exchange
Guangxi Medical University (CHINA)	2004.11.21	Academic Exchange
Medical University of Warsaw (POLAND)	2010. 4. 1	Academic Exchange
Medical University of Lublin (POLAND)	2010. 4. 5	Academic Exchange
Heinrich Heine University Düsseldorf (GERMANY)	2012. 8. 9	Academic Exchange
University of Hawaii, John a. Burns School of Medicine (U.S.A.)	2016. 2. 3	Academic Exchange
Hitit University (TURKEY)	2013.12.17	Academic Exchange

Data on May 1, 2016

International Students

Country	Graduate Students		Total
	Government	Private	
China	1	4	5
Bangladesh		3	3
Vietnam	2	1	3
India	1		1
Total	4	8	12

Data on May 1, 2016



International Student Excursion (in Gifu & Fukui / Nov. 2015)

International Residence

Classification	Building		Family Type	
	Single Type	Family Type	Single Type	Family Type
Architectural Area	206m ²	147m ²		
Total Building Area	554m ²	567m ²		
Room Type (Area)	Single Rooms (14m ²)	20	Couple Rooms (40m ²)	6
	Meeting Room (19m ²)	1	Family Rooms (59m ²)	4



International Residence

JOINT-USE FACILITIES FOR EDUCATION AND RESEARCH

►► Preminent Medical Photonics Education & Research Center Director MINOSHIMA Shinsei

The purpose of this center is to advance the specialized research and development of our university and to cultivate human resources. A particular feature of our university is the medical application of photons, light, and various imaging technologies for basic/applied/clinical research as well as the development of practical instruments for medical use. This center strives to take even more extensive action to promote these advantageous features of this university.

● Institute for Medical Photonics Research

Chairperson **MAGATA Yasuhiro** Vice Chairperson **HOSHI Yoko**

The Institute for Medical Photonics Research was launched in 2016 based on the previous center, Medical Photonics Research Center. Of 8 departments in this institute, the Department of Medical Spectroscopy is endowed by Hamamatsu Photonics K.K. In this institute various types of medical research utilizing light or photons are ongoing. Current topics include: (i) pursuit of multilevel mechanism of life from molecules to individuals, (ii) developing novel diagnostic methods, medical devices and probes (tracers) for disease diagnoses or therapies, (iii) use of "omics" technologies to unveil the etiology of various diseases, and (iv) development of photo dynamic treatment methods for cancer therapy.



● Laboratory Animal Facilities & Services

Chairperson **KITAGAWA Masatoshi** Vice Chairperson **KATO Hideki**

The Laboratory Animal Facilities & Services provides researchers with subjects for animal experiments in basic medical research and also contributes to education in animal experiments for both researchers and students. In addition, the laboratory developed many mutant mouse strains as animal models for human diseases using original methods and is providing them to researchers. Recently, the laboratory is also contributing to breeding and reproduction of common marmosets to provide them to researchers.



● Advanced Research Facilities & Services

Chairperson **FUKUDA Atsuo** Vice Chairperson **UCHIDA Chiharu**

Advanced Research Facilities and Services (ARFS) comprise of Laboratory for Promotion of Advanced Research (LPAR) and Core Biotechnology Services (CBS).

The aim of LPAR is to contribute to promoting both basic and clinical research through utilization of instruments in ARFS and inter-departmental collaboration. The CBS staff are experts in managing advanced equipment and RI analysis. The staff help researchers and directly contribute to the advancement of education and research in biomedical sciences.



● Institute for Innovative Medical Collaboration

Chairperson **ONODERA Yuichiro**

The Institute for Innovative Medical Collaboration was established in April 2011, as a window of one-stop service (single point of contact) for industry-academic and medical-engineering collaboration. The Institution includes the PET-CT building and the cyclotron building, and manages the imaging devices including MRI, CT, and PET/SPECT/CT scanners for experimental studies, and PET/CT scanner for clinical studies in our university. It also works as the core facility for "Hamamatsu Medical and Engineering Technology Innovation Core (HaMTIC)" which develops a local industry-academic collaboration to produce new medical devices based on the optical and imaging technology.



Health Administration Center

Head **HOTTA Yoshihiro**

This center contributes to the maintenance and promotion of the health of students and the staff, and thus to the achievement of student education and various activities of the university staff. We also conduct annual medical checks and medical consultations on both physical and mental health, as well as investigations of health problems.



Center for Safety & Hygiene Administration

Head **MAEDA Hiroshi**

The Center for Safety & Hygiene Administration was founded in April 2003. The Center's primary missions are to draft plans to achieve projects concerning the University's hygiene and safety and to seek the thorough implementation of the guidelines for the prevention of environmental pollution, health hazards, accidents and disasters related to the University's educational and research activities.

The important objectives are: to assess the working environments according to the Industrial Safety and Health Law and other related rules and regulations, to promote the safety and health of workers and to secure a safer and healthier working environment.



Center for Medical Waste Management

Head **FUJIMOTO Chuzo**

Wastewater from the University Hospital and laboratories is delivered to the sewage treatment plant in the Center for Medical Waste Management. The sewage treatment processes include settlement in a pool, activated sludge treatment with anaerobic and aerobic bacteria, sedimentation, coagulation, and filtration with sand and activated carbon.

The treated wastewater is subjected to water examination before it is discharged into the public sewer.

Waste organic solvents, waste acid and alkaline solutions, unused chemicals, and failed apparatuses are collected at this center; the disposal of those wastes is outsourced.

Moreover, lectures on effluent treatment and separation of waste are provided to both students and staff.



Information Technology Center

Head **TANI Shigeki**

The Information Technology Center provides the information infrastructure of the university. It supports the network, email system, servers and information technology use, including the intermediation of document retrieval.

Our wireless network is designed to be a convenient supplement to the wired network for general functions such as Web browsing and email. Wireless "access points" located throughout many buildings and common areas of the campus allow compatible wireless devices to connect to the University's network with authenticated access to the Internet.

The University computer room for information processing allows interactive communication among students and teachers. The center contributes to the convenience of the user by its advanced Information Infrastructure.



Research Center for Child Mental Development

Head **TAKEI Noriyoshi**

The center has been devoting itself to research linked with public health, mental health and various realms of developments in children, extending to multidisciplinary activities, while in collaboration with other universities (Osaka University, Kanazawa University and Chiba University, Fukui University, and Hirosaki University). One of activities includes initiation of the Hamamatsu Birth Cohort (HBC) studies in which about 1,200 children have been followed up since November 2007 to ascertain a wide range of developments, i.e., physical health as well as neuropsychological milestones, to elucidate problems or hardship in health developing children undergo and to discover preventive measures. At the same time, we are fostering professionals who specialize in the mind of children through educational programs run by the United Graduate School of Child Development (postgraduate courses) under the joint-organization of 5 universities: Osaka U, Kanazawa U, HUSM, Chiba U, and Fukui U.



Medical Education Center

Head **UMEMURA Kazuo** Vice Head **IGARASHI Hiroshi**

The Medical Education Center was founded in April 2012. The Center manages, organizes and implements the education systems for the medical school of Hamamatsu University School of Medicine, including curriculums and evaluation systems especially for PBL (Problem-Based Learning), clinical clerkship, and Education for developing medical Professionalism. The mission of the Center is to keep our educational systems at world standard levels and to improve them progressively.



General-Family Medicine Education & Research Center (GMEC)

Head **OJIMA Toshiyuki** Vice Head **NARUMOTO Keiichiro**

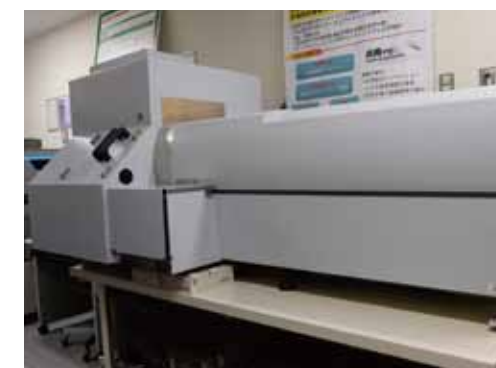
The mission of the center is to train physicians who provide primary care in local communities. The tasks of the center are to teach medical students, interns and residents the principles of family/general medicine and to develop and manage the educational programs enriched with support for research activities and cooperation with local governments. Clinical education is provided mainly at two community clinics; Mori-machi Family Medicine Clinic and Kikugawa Family Health Center.



International Mass Imaging Center

Head **SETOU Mitsutoshi** Vice Head **SUGIMURA Haruhiko**

In April 2016, we launched the International Mass Imaging Center. This center was selected as a global demonstration base for IMS (Imaging Mass Spectrometry) technology in Asia by Bruker Daltonics K.K. Our main mission is to standardize IMS techniques by international collaboration with IMS bases in the United States and Germany. And, we are promoting applications of IMS technologies for medical science using 2 cutting-edge devices provided by Bruker Daltonics. We are also engaged in several collaborative research projects with Shimadzu Corporation, ULVAC-PHI and Waters Corporation.



UNIVERSITY LIBRARY

Library Opening Hours

Monday to Friday 9:00 ~ 20:00
Saturday & Sunday 10:00 ~ 17:00

24 hour access to the library is available to students and faculty members by registering their ID cards.



Utilization

Classification		Intramural	Extramural	Total
The Number of Visitors	Regular Hours	83,499	2,323	85,822
	After Hours	35,475	451	35,926
	Total	118,974	2,774	121,748

Classification	Books	Journals	AV Materials
The Number of Items Borrowed	6,368	376	112

Classification	Requests Accepted	Requests Made to Outside
Copying Service	2,392	2,044

Fiscal Year 2015

Library Collection

Classification	Japanese	English	Total
Books	59,559	31,844	91,403
Journals	1,166	1,040	2,206
AV Materials	1,382		1,382
eBooks	173	39	212

Data on March 31, 2016

Books and Journals Accepted

Classification	Japanese	English	Total
Books	1,855	181	2,036
Journals	427	59	486
AV Materials	90		90
Electronic Journals	7,040		7,040
eBooks	83	0	83

Fiscal Year 2015



UNIVERSITY HOSPITAL

Clinical Activities

Clinical Care Departments		Inpatients		Outpatients	
		Total	Average per Day	Total	Average per Day
Internal Medicine 1	Gastroenterology	9,543	26.1	11,827	48.7
	Nephrology	5,225	14.3	6,292	25.9
	Neurology	3,928	10.7	4,007	16.5
Internal Medicine 2	Endocrinology & Metabolism	2,801	7.7	21,766	89.6
	Respiratology	10,582	28.9	12,547	51.6
	Hepatology	3,793	10.4	7,498	30.9
Internal Medicine 3	Cardiology	8,117	22.2	13,229	54.4
	Hematology	10,128	27.7	7,646	31.5
	Immunology & Rheumatology	1,785	4.9	4,647	19.1
Psychiatry		13,173	36.0	19,395	79.8
Pediatrics		14,313	39.1	16,038	66.0
Surgery 1	Cardiovascular Surgery	7,164	19.6	2,873	11.8
	Thoracic Surgery	3,795	10.4	1,922	7.9
	Breast Surgery	956	2.6	5,518	22.7
General Surgery & Endoscopic Surgery		2,491	6.8	1,559	6.4
Surgery 2	Esophago-Gastric Surgery	5,220	14.3	4,818	19.8
	Colorectal Surgery	5,058	13.8	4,209	17.3
	Hepato-Biliary-Pancreatic Surgery	4,944	13.5	2,391	9.8
	Vascular Surgery	3,837	10.5	4,476	18.4
Neurosurgery		9,738	26.6	8,254	34.0
Orthopedic Surgery		14,587	39.9	22,743	93.6
Dermatology		3,499	9.6	20,228	83.2
Urology		10,056	27.5	14,771	60.8
Ophthalmology		5,736	15.7	16,367	67.4
Otorhinolaryngology		10,442	28.5	19,281	79.3
Obstetrics & Gynecology		14,408	39.4	17,133	70.5
Radiology		707	1.9	6,213	25.6
Anesthesiology & Critical Care Medicine		39	0.1	2,511	10.3
Dentistry & Oral & Maxillofacial Surgery		2,911	8.0	12,010	49.4
Rehabilitation		—	—	4,841	19.9
Plastic & Reconstructive Surgery		4,792	13.1	6,035	24.8
Clinical Pharmacology & Therapeutics		15	0.0	675	2.8
Pediatric Surgery		524	1.4	1,367	5.6
Emergency Medicine		1,177	3.2	3,659	15.1
Total		195,484	534.1	308,746	1270.6

Fiscal Year 2015

ACCOUNTS & GRANTS

Number of Clinical Lab Tests						
Test Item	Urinalysis and Other Body Fluids	Hematology	Clinical Chemistry	Pathology	Physiology	Collection of Blood and Other Body Fluids
Number	105,832	359,909	2,563,585	15,215	180,158	90,037
Test Item	Endocrinology	Immunology	Microbiology	Endoscopy	Others	Total
Number	70,293	333,001	29,161	10,899	46,584	3,804,674

Fiscal Year 2015

Number of Surgical Operations & Anaesthesias		
Number of Operations	Total	6,039 (Include 766 Endoscopic Surgery)
Number of Anaesthesia	Total	6,323
	General Anaesthesia	4,170
	Local Anaesthesia	1,787
	Spinal Epidural Anaesthesia	354
	Others	12

Fiscal Year 2015

Number of Emergency Cases										
Causes										
Diseases	Injuries			Pregnancy	Total	Total	Total			
	Accidents							Total	Total	Total
	Traffic Accidents	Poisoning	Others							
5,998	467	115	1,235	1,817	743	8,558				

Fiscal Year 2015

Number of X-Ray Examinations						
Method		X-Ray Radiography	X-Ray Fluoroscopy	X-Ray CT	MRI	Total
Number of Patients	Inpatients	37,599	2,184	7,871	2,702	50,356
	Outpatients	37,027	4,006	13,564	7,338	61,935
	Total	74,626	6,190	21,435	10,040	112,291

Fiscal Year 2015

Number of Pathological Autopsy			
	Male	Female	Total
Deceased Patients	180	95	275
Number Subjected to Autopsy	13	8	21
Autopsy Rate (%)	7.2	8.4	7.6
Autopsies Entrusted from Outside	4	1	5

Fiscal Year 2015

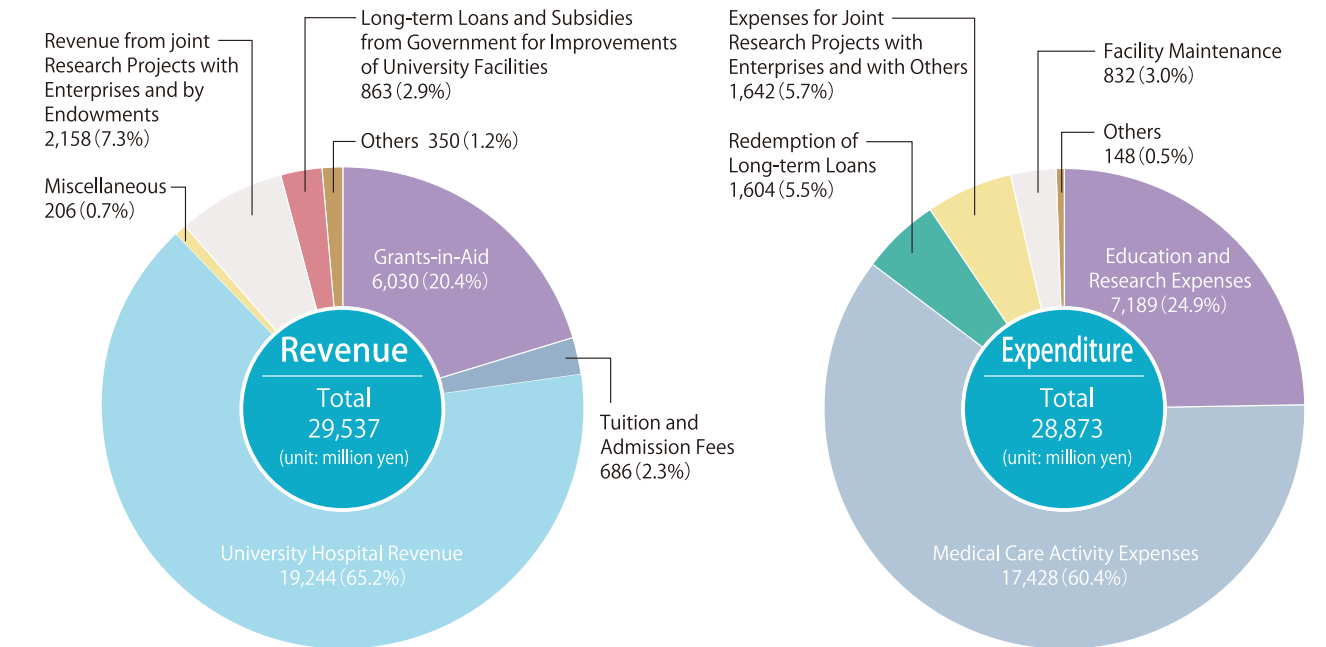
Number of Births	
Vaginal Delivery	558
Vacuum Extraction	81
Forceps Delivery	0
Scheduled Caesarean Delivery	151
Emergency Caesarean Delivery	80
Total	870
Stillbirth (included in total Number)	1

Fiscal Year 2015



da Vinci Xi Surgical System

Fiscal Year 2015



Research Grants

Grants-in-Aid for Scientific Research		
Subject for Research	Number	Amount of Money (Unit: thousand yen)
Scientific Research on Innovative Areas	7	96,460
Scientific Research (A)	1	15,600
Scientific Research (B)	25	126,490
Scientific Research (C)	112	166,660
Challenging Exploratory Research	33	48,230
Young Scientists (S)	0	0
Young Scientists (A)	1	3,900
Young Scientists (B)	49	72,540
Research Activity Start-up	3	4,420
JSPS Fellows	1	1,100
Encouragement of Scientists	11	6,600
Total	243	542,000

The grants above include all overhead expenses.

Fiscal Year 2015

Grants from Outside the University		
Classification	Number	Amount of Money (Unit: thousand yen)
Health and Labour Sciences Research Grants	4	30,392
Endowment	509	510,827
Trust Research	7,073	540,985
Joint Research	65	42,241

Fiscal Year 2015

CAMPUS MAP



Land Area	302,188㎡
Building Area	40,915㎡
Total Building Area	159,057㎡

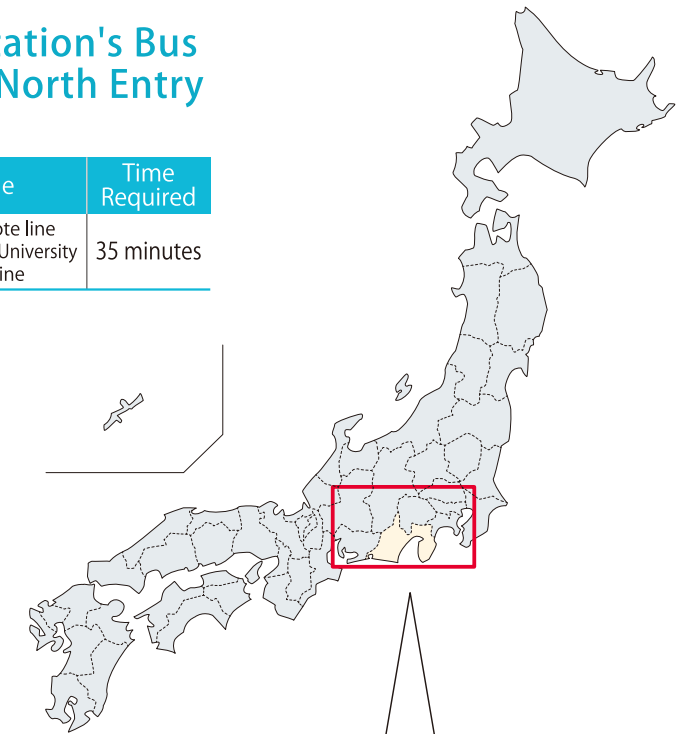
- | | |
|--|---------------------------------------|
| ① Headquarters Building | ⑮ Gymnasium |
| ② University Hospital | ⑯ Martial Arts Hall |
| ③ Clinical Lecture Building | ⑰ Kyudo Ground |
| ④ Translational Research Center | ⑱ Swimming Pool |
| ⑤ PET-CT Facilities | ⑲ Tennis Court |
| ⑥ Nursing Faculty Building | ⑳ Soccer/Rugby Ground |
| ⑦ Basic and Clinical Research Building Annex | ㉑ Baseball Ground |
| ⑧ Basic and Clinical Research Building | ㉒ Center for Medical Waste Management |
| ⑨ RI Experimental Animals Institute | ㉓ International Residence |
| ⑩ Educational Building | ㉔ University Residence |
| ⑪ Welfare Facilities | ㉕ Cenotaph |
| ⑫ University Library | ㉖ Funaokayama University Residence |
| ⑬ Photon Research Building | ㉗ Handayama University Residence |
| ⑭ Cyclotron Facilities | ㉘ Handayama Hall |

LOCATION MAP

Hamamatsu University School of Medicine is located approximately 10.6km north of Hamamatsu Station.

Commuting Guide at the Station's Bus Terminal Located near the North Entry of Hamamatsu Station

Entetsu Bus	Bus Terminal	Route Number	Route Name	Time Required
	Stop 13	50	Shiyakusho Yamanote line bound for Hamamatsu University School of Medicine	35 minutes



Transportation <Railway>	
Tokyo—Hamamatsu	Shinkansen Hikari 1 hour 30 minutes
Nagoya—Hamamatsu	Shinkansen Hikari 30 minutes
Kyoto—Hamamatsu	Shinkansen Hikari 1 hour 10 minutes
Shin Osaka—Hamamatsu	Shinkansen Hikari 1 hour 25 minutes