



National University Corporation

# Hamamatsu University School of Medicine



# 2013

## Message from the President

Nine years have passed since this university's incorporation and renaming as National University Corporation, Hamamatsu University School of Medicine but our original vision and goals remain unchanged. They are: (1) to educate our students to be excellent clinicians and highly creative researchers; (2) to practice medicine on a patient-first basis; and (3) to play a key role in developing community health care.

Since its inception, we have graduated 3,360 medical students and 1,033 nursing students from our university to meet the medical needs of Shizuoka prefecture and beyond our borders. However, from 2010, we will admit 120 new medical students a year because of a national plan to meet the increasing need for medical doctors all over Japan. In addition, more than 1,160 students, including 505 doctors evaluated only on theses, have been awarded medical doctorate degrees as well as more than 174 nurses awarded a Master's degree in nursing.

Our massive expansion and renewal plan for our University Hospital, which was established in 1977, continues on schedule. Four years ago, the new wards for in-patients were completed and became operational. The renewal of out-patient facilities has been also completed recently. The hospital now has 613 beds and 35 clinical services units to fulfill our aim to provide diagnosis and treatment services which have strong points not only in Hamamatsu city and Shizuoka prefecture but also in Japan.

Finally, we have launched two research centers in 2011. One is the Medical Photonics Research Center and the other is the Collaboration Center for Medical Innovation. The former, established by the integration of two previous centers, Photon Medical Research Center and Molecular Imaging Frontier Research Center, was intended at further advancing the studies on medical application of light. The latter was newly set up to prompt collaborative research between our university and the industries. Continuous cooperation by various companies such as Hamamatsu Photonics K.K. (since 1991) has been quite valuable to start and maintain these centers.

Under my leadership, this university's overall goal in all these endeavors is to strengthen our contributing to the improvement of human health and well-being and to expand our efforts in the fields of education, clinical practice and research. I look forward to meeting these goals in the years ahead.



**PRESIDENT**  
NAKAMURA, Satoshi

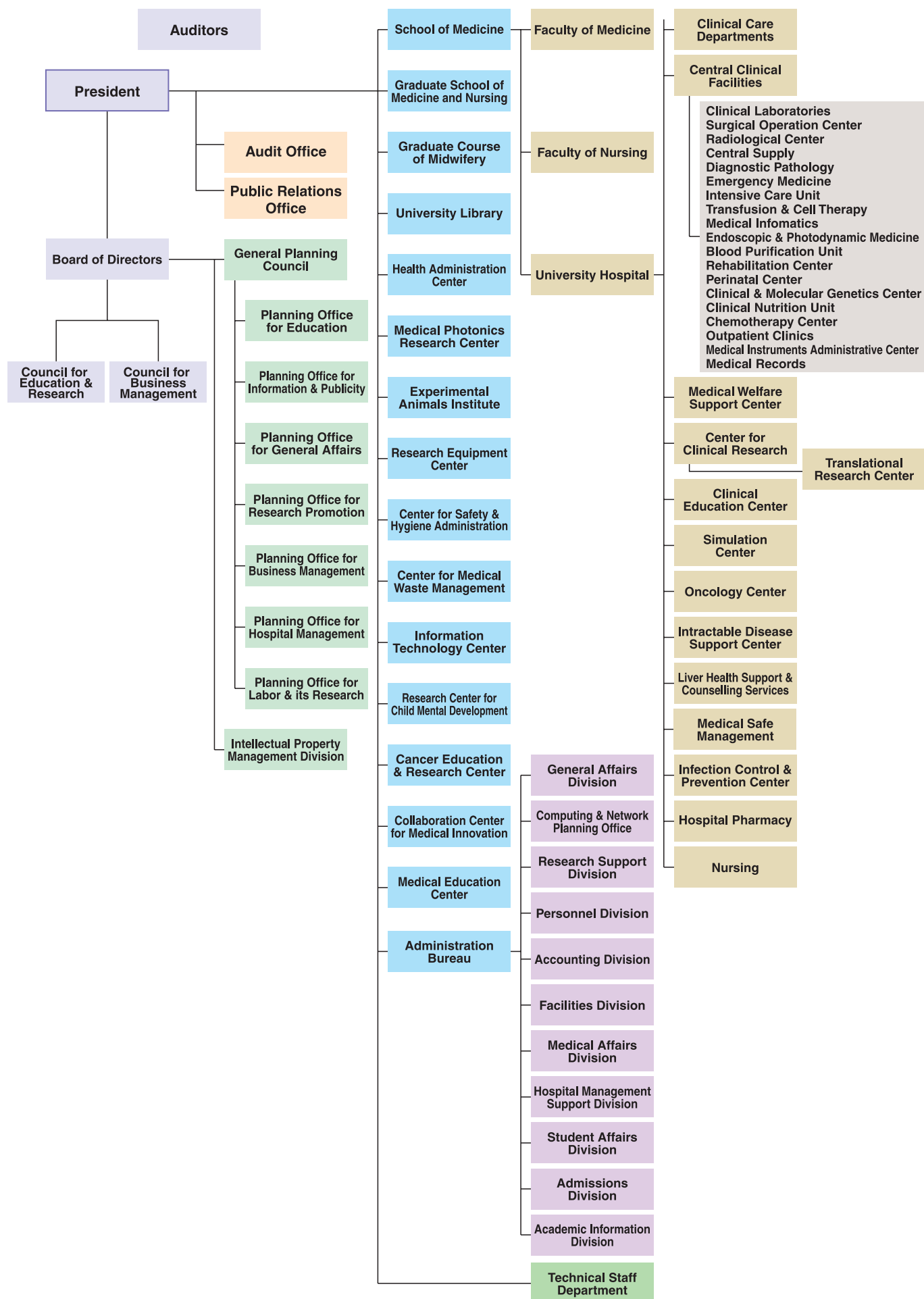
## HISTORY

---

1974	June 7	Hamamatsu University School of Medicine was founded.
1977	Apr. 18	The University Hospital was established.
1980	Apr. 1	Graduate School of Medicine, Doctoral Degree Program, was established.
1995	Apr. 1	The Faculty of Nursing was established.
1999	Apr. 1	The Master's Degree Program of our Graduate School of Nursing was established.
2004	Apr. 1	The National University Corporation Hamamatsu University School of Medicine started.
2008	Apr. 1	Graduate Course of Midwifery was established.

---

# ORGANIZATION



# ADMINISTRATIVE OFFICERS

<b>PRESIDENT</b>	NAKAMURA, Satoshi		
<b>EXECUTIVE DIRECTORS/ VICE-PRESIDENTS</b>	(for Education & International Exchange) KOIDE, Yukio	(for Evaluation, Labor & Safety Control) SUZUKI, Osamu	(for Finance & Hospital) TAKIGAWA, Masahiro
<b>EXECUTIVE DIRECTOR</b>	(for Administration & Collaboration Development) HIRUMA, Akira		
<b>AUDITORS</b>	YAMAZAKI, Katsuyasu	TSUDA, Hiroshi	
<b>VICE-PRESIDENTS</b>	NAKAHARA, Daiichiro	MINOSHIMA, Shinsei	TAKAHASHI, Seio
<b>COUNCIL FOR BUSINESS MANAGEMENT</b>	NAKAMURA, Satoshi HIRUMA, Akira UESUGI, Michiyo NAGAI, Yoshiyuki	SUZUKI, Osamu TAKAHASHI, Seio SARUTA, Takao MIMURO, Kenichiro	TAKIGAWA, Masahiro ITO, Shuji SUZUKI, Katsuhiko MURAMOTO, Junko
<b>COUNCIL FOR EDUCATION &amp; RESEARCH</b>	NAKAMURA, Satoshi TAKIGAWA, Masahiro MINOSHIMA, Shinsei HARIYAMA, Takahiko KONNO, Hiroyuki	KOIDE, Yukio NAKAHARA, Daiichiro WATANABE, Hiroshi FUKUDA, Atsuo OZONO, Seiichiro	SUZUKI, Osamu MIYAJIMA, Hiroaki KITAGAWA, Masatoshi UMEMURA, Kazuo NAGATA, Toshi

## ● SCHOOL OF MEDICINE

### FACULTY OF MEDICINE

#### BASIC SCIENCES

##### INTEGRATED HUMAN SCIENCES

- **ETHICS** PROFESSOR MORISHITA, Naoki
- **PSYCHOLOGY** PROFESSOR NAKAHARA, Daiichiro
- **LEGAL** PROFESSOR OISO, Giichiro
- **MATHEMATICS** PROFESSOR NODA, Akio
- **PHYSICS** PROFESSOR SASAKURA, Hiroyuki
- **CHEMISTRY** PROFESSOR FUJIMOTO, Chuzo
- **BIOLOGY** PROFESSOR HARIYAMA, Takahiko
- **ENGLISH** PROFESSOR NAKAYASU, Minako
- **JAPANESE & JAPANESE AFFAIRS** PROFESSOR SATO, Kiyoaki
- **BIOMEDICAL INFORMATICS** PROFESSOR TANI, Shigeki

##### ANATOMY

PROFESSOR SATO, Kohji

PROFESSOR SETOU, Mitsutoshi

##### NEUROPHYSIOLOGY

PROFESSOR FUKUDA, Atsuo

##### MEDICAL PHYSIOLOGY

PROFESSOR URANO, Tetsumei

##### MOLECULAR BIOLOGY

PROFESSOR KITAGAWA, Masatoshi

##### BIOCHEMISTRY

PROFESSOR MIURA, Naoyuki

##### TUMOR PATHOLOGY

PROFESSOR SUGIMURA, Haruhiko

##### REGENERATIVE & INFECTIOUS PATHOLOGY

PROFESSOR IWASHITA, Toshihide

##### PHARMACOLOGY

PROFESSOR UMEMURA, Kazuo

##### INFECTIOUS DISEASES

PROFESSOR HORII, Toshinobu

PROFESSOR SUZUKI, Tetsuro

##### COMMUNITY HEALTH & PREVENTIVE MEDICINE

PROFESSOR OJIMA, Toshiyuki

##### LEGAL MEDICINE

PROFESSOR WATANABE, Kanako



## CLINICAL SCIENCES

INTERNAL MEDICINE 1	PROFESSOR	MIYAJIMA, Hiroaki	OPHTHALMOLOGY OTORHINOLARYNGOLOGY/ HEAD & NECK SURGERY	PROFESSOR	HOTTA, Yoshihiro
	PROFESSOR	KANAOKA, Shigeru		PROFESSOR	MINETA, Hiroyuki
INTERNAL MEDICINE 2	PROFESSOR	SUDA, Takafumi	RADIOLOGY ANESTHESIOLOGY & CLITICAL CARE MEDICINE	PROFESSOR	SAKAHARA, Harumi
INTERNAL MEDICINE 3	PROFESSOR	HAYASHI, Hideharu		PROFESSOR	SATO, Shigehito
PSYCHIATRY	PROFESSOR	MORI, Norio	OBSTETRICS & GYNECOLOGY PEDIATRICS	PROFESSOR	KANAYAMA, Naohiro
SURGERY 1	PROFESSOR	SHIYA, Norihiko		PROFESSOR	OGATA, Tsutomu
SURGERY 2	PROFESSOR	KONNO, Hiroyuki	DENTISTRY & ORAL & MAXILLOFACIAL SURGERY LABORATORY MEDICINE	PROFESSOR	KATOU, Fuminori
NEUROSURGERY	PROFESSOR	NAMBA, Hiroki		PROFESSOR	MAEKAWA, Masato
ORTHOPEDIC SURGERY	PROFESSOR	MATSUYAMA, Yukihiro	CLINICAL PHARMACOLOGY & THERAPEUTICS EMERGENCY & DISASTER MEDICINE	PROFESSOR	WATANABE, Hiroshi
DERMATOLOGY	PROFESSOR	TOKURA, Yoshiki		PROFESSOR	YOSHINO, Atsuto
UROLOGY	PROFESSOR	OZONO, Seiichiro	CLINICAL ONCOLOGY	PROFESSOR	OHNISHI, Kazunori

## DEPARTMENT BY DONATION

REGIONAL MEDICAL MANAGEMENT STUDIES	PROFESSOR	YAMAOKA, Taiji
CHILD & ADOLESCENT PSYCHIATRY	PROFESSOR	SUGIYAMA, Toshiro
MEDICAL EDUCATION	ASSOCIATE PROFESSOR	IGARASHI, Hiroshi
REGIONAL NEONATAL-PERINATAL MEDICINE	ASSOCIATE PROFESSOR	IJIMA, Shigeo
OBSTETRICS, GYNECOLOGY & FAMILY MEDICINE	PROFESSOR	SUGIMURA, Motoi

## FACULTY OF NURSING

BASIC NURSING	PROFESSOR	WATANABE, Yasuhide	CLINICAL NURSING	PROFESSOR	MORI, keiko
	PROFESSOR	MIURA, Katsutoshi		PROFESSOR	SATO, Naomi
	PROFESSOR	NAGATA, Toshi		PROFESSOR	KUBOTA, Kimie
	PROFESSOR	KATAYAMA, Harumi	COMMUNITY NURSING	PROFESSOR	TATSUMI, Asami
				PROFESSOR	SUZUKI, Mizue

## GRADUATE COURSE OF MIDWIFERY

PROFESSOR	KUBOTA, Kimie
-----------	---------------

## MEDICAL PHOTONICS RESEARCH CENTER

BASIC MEDICAL PHOTONICS LABORATORY	PROFESSOR	MINOSHIMA, Shinsei	APPLIED MEDICAL PHOTONICS LABORATORY	PROFESSOR	MAGATA, Yasuhiro
	PROFESSOR	SETOU, Mitsutoshi		PROFESSOR	YAMAMOTO, Seiji
				PROFESSOR	OKAZAKI, Shigetoshi
CLINICAL MEDICAL PHOTONICS LABORATORY	PROFESSOR	OUCHI, Yasuomi			

## RESEARCH CENTER FOR CHILD MENTAL DEVELOPMENT

PROFESSOR	TAKEI, Noriyoshi
-----------	------------------

## ● UNIVERSITY HOSPITAL

<b>DIRECTOR</b>	<b>TAKIGAWA, Masahiro</b>	<b>VICE-DIRECTORS</b>	[for Clinical Practice & Teaching] <b>SAKAHARA, Harumi</b>	[for Management Reform] <b>MINETA, Hiroyuki</b>	[for Risk Management] <b>KONNO, Hiroyuki</b>	[for Patient Service] <b>KUWABARA, Yumie</b>
-----------------	---------------------------	-----------------------	---	--	---	---

CLINICAL CARE DEPARTMENTS / HEADS					
<b>GENERAL MEDICINE</b>	TAKIGAWA, Masahiro				
<b>INTERNAL MEDICINE 1</b> DIVISION OF GASTROENTEROLOGY DIVISION OF NEPHROLOGY DIVISION OF NEUROLOGY	MIYAJIMA, Hiroaki SUGIMOTO, Ken YASUDA, Hideo MIYAJIMA, Hiroaki	<b>INTERNAL MEDICINE 2</b> DIVISION OF ENDOCRINOLOGY & METABOLISM DIVISION OF RESPIRATOLOGY DIVISION OF HEPATOLOGY	SUDA, Takafumi OKI, Yutaka SUDA, Takafumi KOBAYASHI, Yoshimasa	<b>INTERNAL MEDICINE 3</b> DIVISION OF CARDIOLOGY DIVISION OF HEMATOLOGY DIVISION OF IMMUNOLOGY & RHEUMATOLOGY	HAYASHI, Hideharu HAYASHI, Hideharu OHNISHI, Kazunori OGAWA, Noriyoshi
<b>PSYCHIATRY</b>	MORI, Norio	<b>SURGERY 1</b> DIVISION OF CARDIOVASCULAR SURGERY DIVISION OF THORACIC SURGERY DIVISION OF BREAST SURGERY DIVISION OF GENERAL SURGERY & ENDOSCOPIC SURGERY	SHIYA, Norihiko SHIYA, Norihiko FUNAI, Kazuhito OGURA, Hiroyuki WADA, Hidetoshi	<b>SURGERY 2</b> DIVISION OF ESOPHAGO-GASTRIC SURGERY DIVISION OF COLORECTAL SURGERY DIVISION OF HEPATO-BILIARY-PANCREATIC SURGERY DIVISION OF VASCULAR SURGERY	KONNO, Hiroyuki KONNO, Hiroyuki KONNO, Hiroyuki SAKAGUCHI, Takanori UNNO, Naoki
<b>PEDIATRICS</b>	OGATA, Tsutomu				
<b>NEUROSURGERY</b>	NAMBA, Hiroki	<b>ORTHOPEDIC SURGERY</b>	MATSUYAMA, Yukihiro	<b>DERMATOLOGY</b>	TOKURA, Yoshiki
<b>UROLOGY</b>	OZONO, Seiichiro	<b>OPHTHALMOLOGY</b>	HOTTA, Yoshihiro	<b>OTORHINOLARYNGOLOGY</b>	MINETA, Hiroyuki
<b>OBSTETRICS &amp; GYNECOLOGY</b>	KANAYAMA, Naohiro	<b>RADIOLOGY</b>	SAKAHARA, Harumi	<b>ANESTHESIOLOGY &amp; CLITICAL CARE MEDICINE</b>	SATO, Shigehito
<b>DENTISTRY &amp; ORAL &amp; MAXILLOFACIAL SURGERY</b>	KATOU, Fuminori	<b>REHABILITATION</b>	MIZUSHIMA, Takashi	<b>PLASTIC &amp; RECONSTRUCTIVE SURGERY</b>	FUKAMIZU, Hidekazu
<b>CLINICAL PHARMACOLOGY &amp; THERAPEUTICS</b>	WATANABE, Hiroshi	<b>DIAGNOSTIC PATHOLOGY</b>	BABA, Satoshi	<b>PEDIATRIC SURGERY</b>	KAWAHARA, Hisayoshi
CENTRAL CLINICAL FACILITIES / HEADS					
<b>CLINICAL LABORATORIES</b>	MAEKAWA, Masato	<b>SURGICAL OPERATION CENTER</b>	SATO, Shigehito	<b>RADIOLOGICAL CENTER</b>	SAKAHARA, Harumi
<b>CENTRAL SUPPLY</b>	SHIYA, Norihiko	<b>DIAGNOSTIC PATHOLOGY</b>	BABA, Satoshi	<b>EMERGENCY MEDICINE</b>	YOSHINO, Atsuto
<b>INTENSIVE CARE UNIT</b>	DOI, Matsuyuki	<b>TRANSFUSION &amp; CELL THERAPY</b>	TAKESHITA, Akihiro	<b>MEDICAL INFORMATICS</b>	KIMURA, Michio
<b>ENDOSCOPIC &amp; PHOTODYNAMIC MEDICINE</b>	KONNO, Hiroyuki	<b>BLOOD PURIFICATION UNIT</b>	KATO, Akihiko	<b>REHABILITATION CENTER</b>	MIZUSHIMA, Takashi
<b>PERINATAL CENTER</b>	ITOH, Hiroaki	<b>CLINICAL &amp; MOLECULAR GENETICS CENTER</b>	MAEKAWA, Masato	<b>CLINICAL NUTRITION UNIT</b>	KATO, Akihiko
<b>CHEMOTHERAPY CENTER</b>	OHNISHI, Kazunori	<b>OUTPATIENT CLINICS</b>	OZONO, Seiichiro	<b>MEDICAL INSTRUMENTS ADMINISTRATIVE CENTER</b>	MINETA, Hiroyuki
<b>MEDICAL RECORDS</b>	KIMURA, Michio				
MEDICAL WELFARE SUPPORT CENTER		CENTER FOR CLINICAL RESEARCH		CLINICAL EDUCATION CENTER	
<b>HEAD</b>	KOBAYASHI, Toshihiko	<b>HEAD</b>	UMEMURA, Kazuo	<b>HEAD</b>	SAKAHARA, Harumi
SIMULATION CENTER		ONCOLOGY CENTER		INTRACTABLE DISEASE SUPPORT CENTER	
<b>HEAD</b>	IGARASHI, Hiroshi	<b>HEAD</b>	OHNISHI, Kazunori	<b>HEAD</b>	MIYAJIMA, Hiroaki
LIVER HEALTH SUPPORT & COUNSELLING SERVICES		MEDICAL SAFE MANAGEMENT		INFECTION CONTROL & PREVENTION CENTER	
<b>HEAD</b>	KOBAYASHI, Yoshimasa	<b>HEAD</b>	KONNO, Hiroyuki	<b>HEAD</b>	MAEKAWA, Masato
HOSPITAL PHARMACY		NURSING			
<b>HEAD</b>	KAWAKAMI, Junichi	<b>HEAD</b>	KUWABARA, Yumie		

# STAFF

CLASSIFICATION	PRESIDENT	DIRECTORS	AUDITORS	PROFESSORS	ASSOCIATE PROFESSORS	SENIOR ASSISTANT PROFESSORS	ASSISTANT PROFESSORS (RESEARCH ASSOCIATES)	TOTAL	CLERKS & TECHNICIANS	GRAND TOTAL
ADMINISTRATION BUREAU	1	4	2					7	135	142
SCHOOL OF MEDICINE				56	34	6	92	188	11	199
UNIVERSITY HOSPITAL				4	11	39	50	104	733	837
HEALTH ADMINISTRATION CENTER						1		1	1	2
MEDICAL PHOTONICS RESEARCH CENTER				5	1		6	12		12
EXPERIMENTAL ANIMALS INSTITUTE					1		1	2	2	4
RESEARCH EQUIPMENT CENTER								0	12	12
CENTER FOR MEDICAL WASTE MANAGEMENT								0	3	3
RESEARCH CENTER FOR CHILD MENTAL DEVELOPMENT				1	2	1	6	10		10
COLLABORATION CENTER FOR MEDICAL INNOVATION								0	1	1
MEDICAL EDUCATION CENTER								0	1	1
INTELLECTUAL PROPERTY MANAGEMENT DIVISION							1	1		1
TOTAL	1	4	2	66	49	47	156	325	899	1,224

Data on May 1, 2013

SENIOR RESIDENTS	JUNIOR RESIDENTS	TOTAL
103	28	131

Data on May 1, 2013



## ■ Faculty of Medicine

The Faculty of Medicine aims to grow physicians and medical researchers who have extensive medical knowledge, skills and well-rounded humanity. The faculty strives to contribute to the development of medicine, medical care, and to the enhancement of human health and welfare.

Based on our university's policy, many excellent clinicians, who graduated from our university, are contributing to medical treatments both in Shizuoka Prefecture and nationwide. Our graduates are also engaging in state-of-the-art research at our University. New technologies are also being adopted by the Faculty in fields such as treatments of cancers and the development of advanced diagnostic techniques. In particular, The Photon Medical Research Center was established for the promotion of advanced studies in the field of medical photonics.

Finally, our graduates play active roles not only as clinicians, medical researchers and medical educators, but also as industrial physicians and medical welfare administrators.



## ■ Faculty of Nursing

The Faculty of Nursing aims to grow talented people who play active roles in the fields of practical nursing skills, nursing research, and education locally and globally. The faculty strives to contribute to the development of the nursing science and enhancement of human health and welfare.

Students develop their scientific thinking and kind consideration for others during 4 years of student life. Graduates can continue their professional development in the Master's Program of the Graduate School of Nursing to pursue careers in nursing education and as researchers.

## ● ADMISSIONS AND THE PRESENT NUMBER OF STUDENTS

School			1st yr.	2nd yr.	3rd yr.	4th yr.	5th yr.	6th yr.	Total
FACULTY OF MEDICINE	Admission Quota 120 (5)*	Male	77	82	80 (4)	82 (2)	74 (4)	76 (5)	471 (15)
		Female	42	39	44 (2)	40 (2)	32 (2)	26 (3)	223 (9)
	Capacity 685 (25)*	Total	119	121	124 (6)	122 (4)	106 (6)	102 (8)	694 (24)
FACULTY OF NURSING	Admission Quota 70 (10)**	Male	5	5	5 (1)	5 (1)			20 (2)
		Female	62	56	59 (9)	63 (9)			240 (18)
	Capacity 260 (20)**	Total	67	61	64 (10)	68 (10)			260 (20)

( ) \* The numbers in parentheses indicate the quotas for 2nd - year transfer students included in the total.

( ) \*\* The numbers in parentheses indicate the quotas for 3rd - year transfer students included in the total.

Data on May 1, 2013

## ● RESEARCH STUDENTS

	2013
Male	5
Female	3

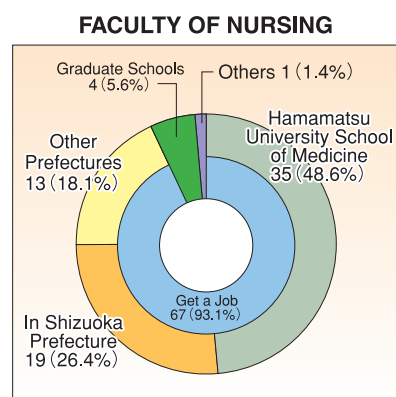
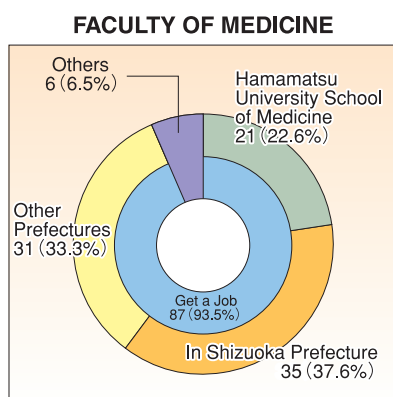
Data on May 1, 2013



## ● NUMBERS OF GRADUATES

CLASSIFICATION	FACULTY OF MEDICINE							FACULTY OF NURSING						
	1979~ 2007	2008	2009	2010	2011	2012	Total	1998~ 2007	2008	2009	2010	2011	2012	Total
Male	2,126	58	67	66	76	67	2,460	24	8	4	4	1	5	46
Female	743	39	35	31	26	26	900	662	61	65	65	67	67	987
Total	2,869	97	102	97	102	93	3,360	686	69	69	69	68	72	1,033

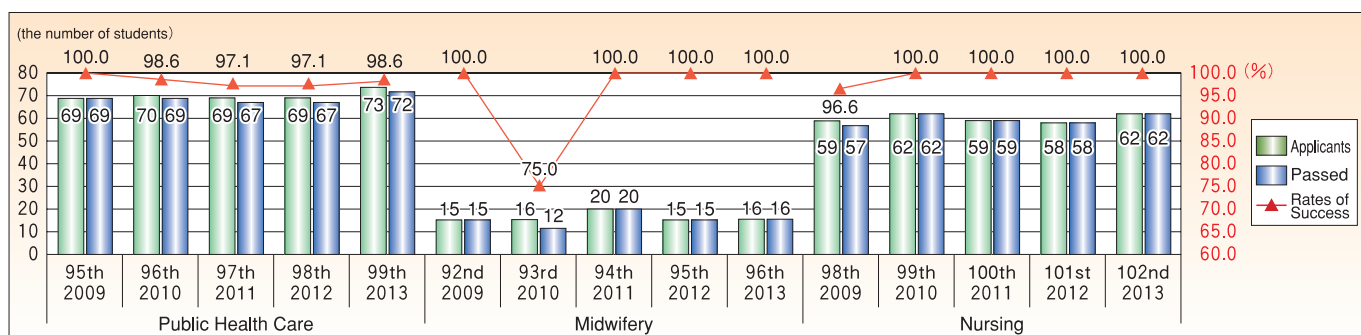
## ● LOCATIONS OF GRADUATES (CLASS 2012)



## ● SUCCESS RATES IN THE NATIONAL MEDICAL PRACTITIONERS QUALIFYING EXAMINATION

CLASSIFICATION	New Graduates			Reexaminees			Total			National Ranking
	Applicants	Passed	Rate of success	Applicants	Passed	Rate of success	Applicants	Passed	Rate of success	
103rd 2009	97	95	97.9	4	1	25.0	101	96	95.0	21
104th 2010	102	96	94.1	4	2	50.0	106	98	92.5	24
105th 2011	97	94	96.9	8	6	75.0	105	100	95.2	8
106th 2012	102	100	98.0	3	3	100	105	103	98.1	2
107th 2013	93	87	93.5	2	1	50.0	95	88	92.6	28

## ● SUCCESS RATES IN THE NATIONAL MEDICAL EXAMINATIONS FOR PUBLIC HEALTH CARE, MIDWIFERY AND NURSING

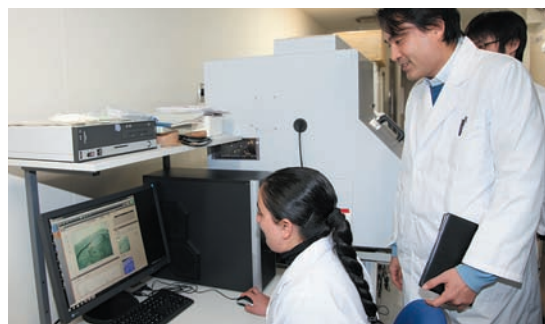




## ■ Doctor Degree Program in Graduate School of Medicine

This doctoral program aims to grow both basic medical researchers and clinical scientists who will take the leadership on global bases. Based on taking a broad range of classes including “advanced photo-medicine”, the students for medical researchers should acquire high-level expert knowledge and skills to perform creative research.

On the other hand, the students for clinical scientists should acquire ability to apply the research mind to their own clinical practice.



## ■ Master's Degree Program in Graduate School of Nursing



This program aims to grow highly advanced nursing specialists, pedagogues, and researchers who have scientific thought, ability to notice and solve the problems, on the basis of fundamental capability for high-quality nursing knowledge and skills so far acquired.

### ● ADMISSIONS AND THE PRESENT NUMBER OF STUDENTS

#### DOCTORAL DEGREE PROGRAM

Major			1st yr.	2nd yr.	3rd yr.	4th yr.	Total
ADVANCED PHOTO MEDICINE	※ Admission Quota 11	Male	—	—	7 (1)	9 (1)	16 (2)
	※ Capacity 44	Female	—	—	6 (1)	10 (5)	16 (6)
		Total	—	—	13 (2)	19 (6)	32 (8)
INTEGRATED FUNCTIONAL MEDICINE	※ Admission Quota 5	Male	—	—	3 (1)	8 (4)	11 (5)
	※ Capacity 20	Female	—	—	2 (1)	0	2 (1)
		Total	—	—	5 (2)	8 (4)	13 (6)
FRONTIER MEDICINE	※ Admission Quota 8	Male	—	1 (1)	8	18	27 (1)
	※ Capacity 32	Female	—	0	4 (1)	4	8 (1)
		Total	—	1 (1)	12 (1)	22	35 (2)
INFECTIOUS DISEASE CONTROL AND PREVENTIVE MEDICINE	※ Admission Quota 6	Male	—	0	2	2	4
	※ Capacity 24	Female	—	1 (1)	3	2	6 (1)
		Total	—	1 (1)	5	4	10 (1)
MEDICINE	Admission Quota 30	Male	27 (3)	25	—	—	52 (3)
	Capacity 120	Female	12 (1)	7	—	—	19 (1)
		Total	39 (4)	32	—	—	71 (4)

The numbers in parentheses indicate those students enrolled in October included in the total.

※ The upper limit of the entrant number before the fiscal year 2011.

Data on May 1, 2013

## MASTER'S DEGREE PROGRAM

Major			1st yr.	2nd yr.	Total
NURSING	Admission Quota 16	Male	2	4 (1)	6 (1)
	Capacity 32	Female	15	25 (13)	40 (13)
		Total	17	29 (14)	46 (14)

The number in parentheses indicates those students remaining in the same grade included in the total.

Data on May 1, 2013

## DEGREES AWARDED

	1983~2006	2007	2008	2009	2010	2011	2012
Ph. D. (doctoral course)	494	21	35	28	27	26	24
Ph. D. (thesis only)	440	14	9	14	8	11	9
Master of Nursing (M.A.)	87	17	15	9	15	23	8

Data on May 1, 2013

## RESEARCH STUDENTS

	2013
Male	24
Female	6

Data on May 1, 2013

## GRADUATE COURSE OF MIDWIFERY

Graduate course of Midwifery was established in April 2008, with the aim of supporting local perinatal care and training the students to contribute to the development of Mother-Child health. This course graduates the midwives with high-quality skills in maternity treatments and practical abilities, in one-year of instruction based on “Women’s lifetime health and gender rights”.

	Admission Quota	Capacity	1st yr.
GRADUATE COURSE OF MIDWIFERY	16	16	16

Data on May 1, 2013



## ■ Health Administration Center

HEAD MIYAJIMA, Hiroaki

This Center contributes to the maintenance and promotion of the health of students and the staff, and thus to the achievement of student education and various activities of the university staff. We also conduct annual medical checks and medical consultations on both physical and mental health, as well as investigations of health problems.



## ■ Medical Photonics Research Center

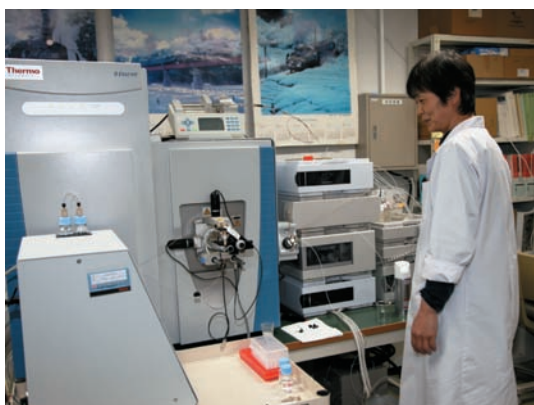
HEAD MINOSHIMA, Shinsei  
VICE-HEAD MAGATA, Yasuhiro

The Medical Photonics Research Center was launched in 2011 by the merger of two erstwhile centers, Photon Medical Research Center and Molecular Imaging Frontier Research Center. Here, a plethora of research projects exploring the medical utility of light and electromagnetic waves are being undertaken. Ongoing projects include: (i) pursuit of the mechanism of life phenomena in every layer from cells to individuals using light and molecular imaging, (ii) development of novel probes (tracers) and diagnostic tools for disease prognosis, (iii) use of “omics” technologies to unveil the etiology of various diseases, (iv) unraveling of enigmas of brain functions and pathophysiology, and (v) development of photo dynamic treatment methods for cancer therapy. The Department of Medical Spectroscopy is endowed by Hamamatsu Photonics K.K.

## ■ Experimental Animals Institute

HEAD WATANABE, Hiroshi

The Experimental Animals Institute established in 1983 is providing researchers with subjects for animal experiments in basic medical research. The institute is also contributing to education through classes on animal experimentation and graduation-thesis research. In addition, laboratory animal science is being promoted by developing many mutant mouse strains as animal models for human diseases using originally developed methods, and providing them to researchers.



## ■ Research Equipment Center

HEAD KITAGAWA, Masatoshi

The Research Equipment Center directly contributes to the advancement of education and research in biomedical sciences. The Center consists of 16 laboratories including RI facilities. The staff of the Center are experts in managing sophisticated analytical equipment and collaborate with researchers. In the RI facilities, technical training for the safe handling of radioisotopes is conducted.



## ■ Center for Safety & Hygiene Administration

HEAD SUZUKI, Osamu

The Center was founded in April 2003. The Center's primary missions are to draft plans to achieve projects concerning the University's hygiene and safety and to seek the thorough implementation of the guidelines for the prevention of environmental pollution, health hazards, accidents and disasters derived from the University's educational and research activities. The important objectives are: to assess the working environments according to the Industrial Safety and Health Law and other related rules and regulations, to promote the safety and health of workers and to secure a safer and healthier working environment.



## ■ Center for Medical Waste Management

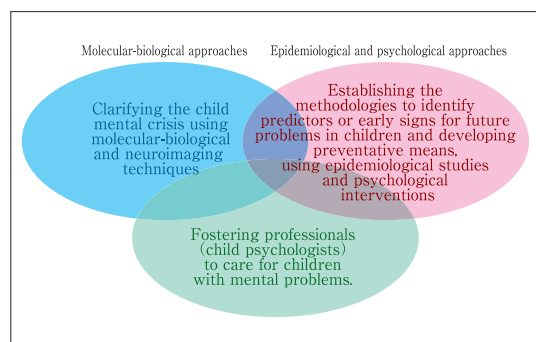
HEAD FUJIMOTO, Chuzo

Trash must be separated according to the trash categories specified in "The Guide to Separating Trash", which is available at the web site of this center. Biohazardous waste has to be put into a properly labeled plastic container or bag. Carry-in wastes may be brought to this center or the collection station. Lectures on the separation and disposal of trash are given by the staff members of this center. Wastewater from the University hospital and laboratories is treated with a sewage treatment plant placed at this center. Processes used for wastewater treatment include settlement in a pool, activated sludge treatment with anaerobic and aerobic bacteria, sedimentation, coagulation, and filtration with sand and activated carbon. Before the discharge of the treated water into the natural environment, examinations are carried out to determine whether adverse environmental effects are eliminated from the effluent.

## ■ Information Technology Center

HEAD TANI, Shigeki

Information Technology Center provides and operates the information infrastructures of the University, which comprises the university network, mail servers, web servers, IT practice and learning facility, etc. Wireless LAN hot spots are set everywhere on the campus; the IT practice and learning facility enables bidirectional display and operation between teachers and learners. The Center continues to provide state-of-the-art IT infrastructures to the University.



## ■ Research Center for Child Mental Development

HEAD MORI, Norio

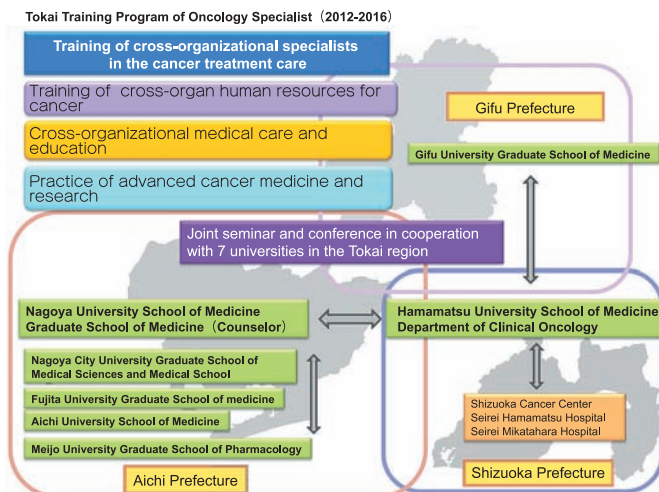
The Center was founded in 2006 as a joint center with the participation of Osaka University and Hamamatsu University School of Medicine, followed by the welcomed participation of Kanazawa University in 2008 and of University of Fukui and Chiba University in 2011. As a leading institute in the interdisciplinary research for child development, the major goals of the Center include investigation of biological, medical, and psychosocial backgrounds of abnormalities in cognitive and emotional status during childhood, and development of efficient educational and clinical intervention methods that are helpful to children with

developmental disorders. It is also our mission here at the Center to educate professionals such as teachers and clinical psychologists so as to allow them to support their disabled children more sufficiently in association with the United Graduate School of Child Development, which consists of the five Universities mentioned above.

## ■Cancer Education & Research Center

HEAD OHNISHI, Kazunori

The mission of the Cancer Education and Research Center is to train physicians who will become leaders in comprehensive cancer therapy, and also to promote advanced research in cancer. This center was founded in October 2007, and opened graduate courses for training cancer professionals in cooperation with Tokai Gann (Cancer) Professional Plan. This program aims at establishing medical oncology teams matching the global standard, and its main institution is Nagoya University School of Medicine. The graduate course consists of 3 courses, clinical oncology, radiotherapy and cancer pharmacology. An intensive course runs concurrently with the graduate course, in which senior physicians can learn the practice of modern cancer management.



## ■Collaboration Center for Medical Innovation

HEAD YAMAMOTO, Seiji

The Collaboration Center for Medical Innovation was established in April 2011, as a window of one-stop service (single point of contact) for industry-academic and medical-engineering collaboration. The Center includes the PET-CT building and the cyclotron building, and manages the imaging devices including MRI, CT, and PET/SPECT/CT scanners for experimental studies, and PET/CT scanner for clinical studies in our university. The Center also works as the core facility for “Hamamatsu Medical and Engineering Technology Innovation Core (HaMTIC)” which develops a local industry-academic collaboration to produce new medical devices based on the optical and imaging technology.

## ■Medical Education Center

HEAD UMEMURA, Kazuo

Medical Education Center was founded in April 2012. The Center manages and organizes the education systems for medical school of Hamamatsu University School of Medicine, including curriculums and evaluation systems especially for PBL (Problem Based Learning), OSCE (Objective Structured Clinical Examination, including Advanced OSCE), CBT (Computer Based Testing), clinical clerkship, and general remarks of medicine. The mission of the Center is to keep our educational systems world standard level and to improve them progressively.





# INTERNATIONAL EXCHANGES

## ● UNIVERSITIES WITH AGREEMENTS FOR COOPERATION

University (Country)	Date of Agreement Signed	Cooperation Contents
CHINA MEDICAL UNIVERSITY (CHINA)	1988. 4.29	SISTER SCHOOL
KYUNGPOOK NATIONAL UNIVERSITY SCHOOL OF MEDICINE (KOREA) KYUNGPOOK NATIONAL UNIVERSITY COLLEGE OF NURSING (KOREA)	1992. 9. 7 2005. 9.23	ACADEMIC EXCHANGE
SHANGHAI JIAO TONG UNIVERSITY SCHOOL OF MEDICINE (CHINA)	2000. 3.24	ACADEMIC EXCHANGE
FACULTY OF MEDICINE, ALBERT-LUDWIGS UNIVERSITY OF FREIBURG (GERMANY)	2003. 6.30	ACADEMIC EXCHANGE
HENAN COLLEGE OF TRADITIONAL CHINESE MEDICINE (CHINA)	2003.12. 8	ACADEMIC EXCHANGE
MEDICAL UNIVERSITY OF BIALYSTOK (POLAND)	2004. 4.19	ACADEMIC EXCHANGE
UNIVERSITY OF DHAKA (BANGLADESH)	2004.11.12	ACADEMIC EXCHANGE
SHAHJALAL UNIVERSITY OF SCIENCE AND TECHNOLOGY (BANGLADESH)	2004.11.12	ACADEMIC EXCHANGE
BANGABANDHU SHEIKH MUJIB MEDICAL UNIVERSITY (BANGLADESH)	2004.11.12	ACADEMIC EXCHANGE
GUANGXI MEDICAL UNIVERSITY (CHINA)	2004.11.21	ACADEMIC EXCHANGE
MEDICAL UNIVERSITY OF WARSAW (POLAND)	2010. 4. 1	ACADEMIC EXCHANGE
MEDICAL UNIVERSITY OF LUBLIN (POLAND)	2010. 4. 5	ACADEMIC EXCHANGE
HEINRICH HEINE UNIVERSITY DÜSSELDORF (GERMANY)	2012. 8. 9	ACADEMIC EXCHANGE
UNIVERSITY OF HAWAII, JOHN A. BURNS SCHOOL OF MEDICINE(U.S.A.)	2012. 9. 6	ACADEMIC EXCHANGE

Data on May. 1, 2013

## ● INTERNATIONAL STUDENTS

Country	Graduate Students		Total
	Government	Private	
CHINA	0	12	12
BANGLADESH	0	5	5
VIETNAM	0	1	1
PAKISTAN	1	1	2
INDIA	0	2	2
<b>Total</b>	1	21	22

Data on May 1, 2013



International Student Excursion 2012

## ● INTERNATIONAL RESIDENCE

Building Classification	Single Type		Family Type	
Architectural Area	206m <sup>2</sup>		147m <sup>2</sup>	
Total Building Area	554m <sup>2</sup>		567m <sup>2</sup>	
Room Type (Area)	Single Rooms (14m <sup>2</sup> )	20	Couple Rooms (40m <sup>2</sup> )	6
	Meeting Room (19m <sup>2</sup> )	1	Family Rooms (59m <sup>2</sup> )	4



International Residence

## ● CLINICAL ACTIVITIES

NUMBER OF PATIENTS					
Clinical Care Departments		Outpatients		Inpatients	
		Total	Average per Day	Total	Average per Day
General Medicine		—	—	—	—
Internal Medicine 1	Gastroenterology	9,751	40.0	10,133	27.8
	Nephrology	6,140	25.2	4,607	12.6
	Neurology	3,319	13.6	2,502	6.9
Internal Medicine 2	Endocrinology & Metabolism	20,301	83.2	2,914	8.0
	Respiratology	12,023	49.3	9,813	26.9
	Hepatology	7,422	30.4	3,205	8.8
Internal Medicine 3	Cardiology	12,650	51.8	7,121	19.5
	Hematology	9,186	37.6	12,331	33.8
	Immunology & Rheumatology	4,188	17.2	1,715	4.7
Clinical Pharmacology & Therapeutics		734	3.0	135	0.4
Psychiatry		18,422	75.5	12,842	35.2
Pediatrics		14,460	59.3	12,320	33.8
Surgery 1	Cardiovascular Surgery	2,284	9.4	7,822	21.4
	Thoracic Surgery	1,406	5.8	2,625	7.2
	Pediatric Surgery	379	1.6	87	0.2
	Breast Surgery	5,582	22.9	653	1.8
	General Surgery & Endoscopic Surgery	1,879	7.7	2,170	5.9
Surgery 2	Esophago-Gastric Surgery	5,126	21.0	4,958	13.6
	Colorectal Surgery	4,423	18.1	4,008	11.0
	Hepato-Biliary-Pancreatic Surgery	2,730	11.2	4,983	13.7
	Vascular Surgery	4,059	16.6	3,188	8.7
Emergency Medicine		3,749	15.4	1,442	4.0
Endoscopic & Photodynamic Medicine		—	—	—	—
Neurosurgery		7,832	32.1	7,588	20.8
Orthopedic Surgery		21,214	86.9	15,053	41.2
Rehabilitation		4,269	17.5	—	—
Dermatology		20,933	85.8	3,789	10.4
Urology		16,970	69.5	9,033	24.7
Ophthalmology		20,316	83.3	5,530	15.2
Otorhinolaryngology		17,041	69.8	8,275	22.7
Obstetrics & Gynecology		17,574	72.0	13,357	36.6
Radiology		7,454	30.5	2,586	7.1
Anesthesiology & Critical Care Medicine		2,879	11.8	147	0.4
Plastic & Reconstructive Surgery		6,271	25.7	4,369	12.0
Clinical & Molecular Genetics Center		—	—	—	—
Dentistry & Oral & Maxillofacial Surgery		9,635	39.5	4,518	12.4
Total		302,601	1,240.2	185,819	509.1

Fiscal Year 2012

NUMBER OF CLINICAL LAB TESTS						
Test Item	Urine and Other Body Fluids	Hematology	Clinical Chemistry	Pathology	Physiology	Collection of Blood and Other Body Fluids
Number	107,495	300,321	2,238,719	14,624	174,569	83,938
Test Item	Endocrinology	Serology	Bacteriology	Endoscopy	Others	Total
Number	61,723	295,717	27,133	10,260	36,684	3,351,183

Fiscal Year 2012

NUMBER OF SURGICAL OPERATIONS & ANAESTHESIAS	
Number of Operations	Total
	5,624
Number of Anaesthesia	Total
	5,624

Fiscal Year 2012

NUMBER OF EMERGENCY CASES						
Causes						Total
Diseases	Injuries				Pregnancy	
	Accidents			Total		
	Traffic Accidents	Poisoning	Others			
6,147	356	94	1,089	1,539	562	8,248

Fiscal Year 2012

NUMBER OF X-RAY EXAMINATION						
Method		X-Ray Radiography	X-Ray Fluoroscopy	X-Ray CT	MRI	Total
Number of Patients	Inpatients	35,825	1,738	6,590	2,411	46,564
	Outpatients	33,925	3,798	11,969	6,431	56,123
	Total	69,750	5,536	18,559	8,842	102,687

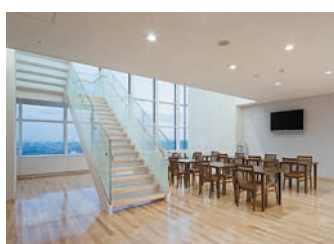
Fiscal Year 2012

NUMBER OF PATHOLOGICAL AUTOPSY			
	Male	Female	Total
Patients Who Died at our Hospital	193	113	306
Number Subjected to Autopsy	9	9	18
Autopsy Rate (%)	4.7	8.0	5.9
Autopsies Entrusted from Outside	2	1	3

Fiscal Year 2012

NUMBER OF BIRTHS	
	Total
Normal Deliveries	490
Abnormal Deliveries	216
Total	706

Fiscal Year 2012





## ● LIBRARY OPENING HOURS

**Monday to Friday** 9:00~20:00

**Saturday & Sunday** 10:00~17:00

24 hour access to the library is available to students and faculty members by registering ID cards.



## ● UTILIZATION

The Number of Visitors	Regular Hours				After Hours				Total			
	Intramural	125,833	Extramural	797	Intramural	37,581	Extramural	8	Intramural	163,414	Extramural	805
The Number of Items Borrowed	Books				Journals				AV Materials			
	8,070				457				165			
Copying Service	Requests Accepted				Requests Made to Outside				Total			
	4,524				1,797				6,321			

Fiscal Year 2012

## ● LIBRARY COLLECTION

Classification	Japanese	English	Total
<b>Books</b>	56,144	33,049	89,193
<b>Journals</b>	1,251	1,113	2,364
<b>AV Materials</b>	1,386		

Data on March 31, 2013

## ● BOOKS AND JOURNALS ACCEPTED

Classification	Japanese	English	Total
<b>Books</b>	2,678	257	2,935
<b>Journals</b>	203	104	307
<b>AV Materials</b>	86		
<b>Electronic Journals</b>	4,550		

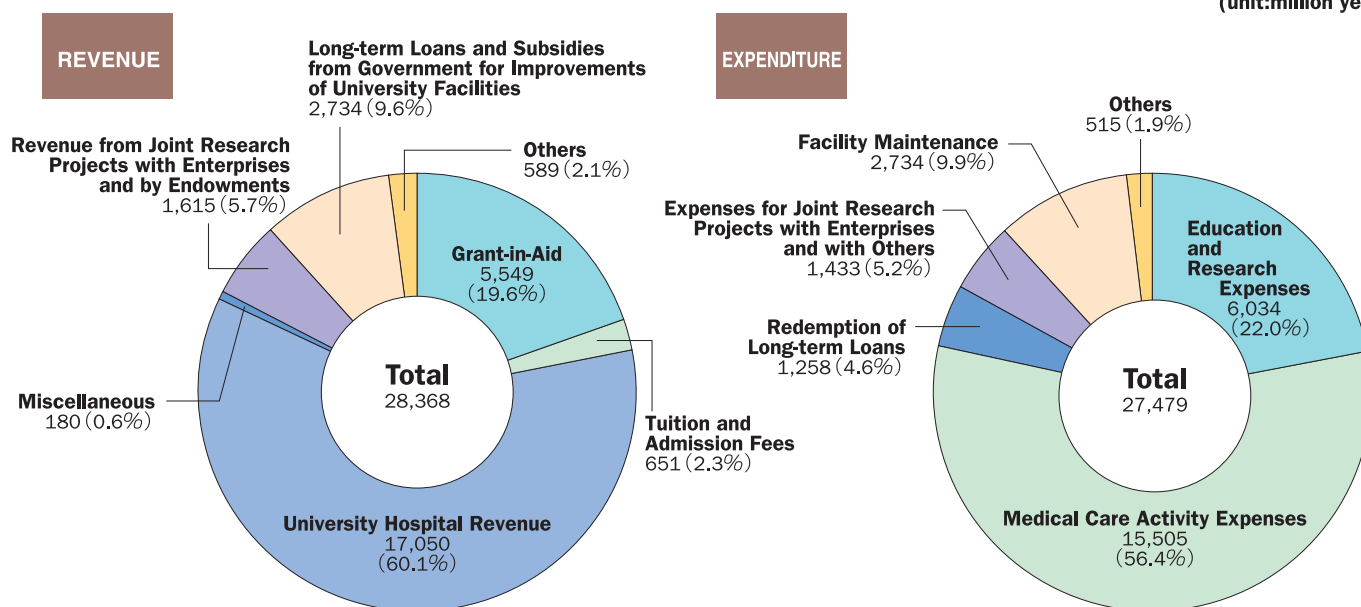
Fiscal Year 2012



# ACCOUNTS & GRANTS

## ● FISCAL YEAR 2012

(unit: million yen)



## ● RESEARCH GRANTS

Grant-in-Aid for Scientific Research		
Subject for Research	Number	Amount of Money (Unit: thousand yen)
Scientific Research on Innovative Areas	8	107,120
Scientific Research (A)	2	21,580
Scientific Research (B)	20	113,360
Scientific Research (C)	95	147,550
Challenging Exploratory Research	32	52,000
Young Scientists (S)	1	20,800
Young Scientists (A)	1	5,850
Young Scientists (B)	51	72,930
Research Activity Start-up	4	5,590
JSPS Fellows	2	1,900
Encouragement of Scientists	4	2,400
<b>Total</b>	<b>220</b>	<b>551,080</b>

The grants above include all overhead expenses.

Fiscal Year 2012

Grant from Outside the University		
Classification	Number	Amount of Money (Unit: thousand yen)
Endowment	639	671,946
Trust Research	5,934	568,684
Joint Research	48	46,078
Others	13	164,322

Fiscal Year 2012



# CAMPUS MAP



Land Area	302,136m <sup>2</sup>
Building Area	40,823m <sup>2</sup>
Total Building Area	152,265m <sup>2</sup>

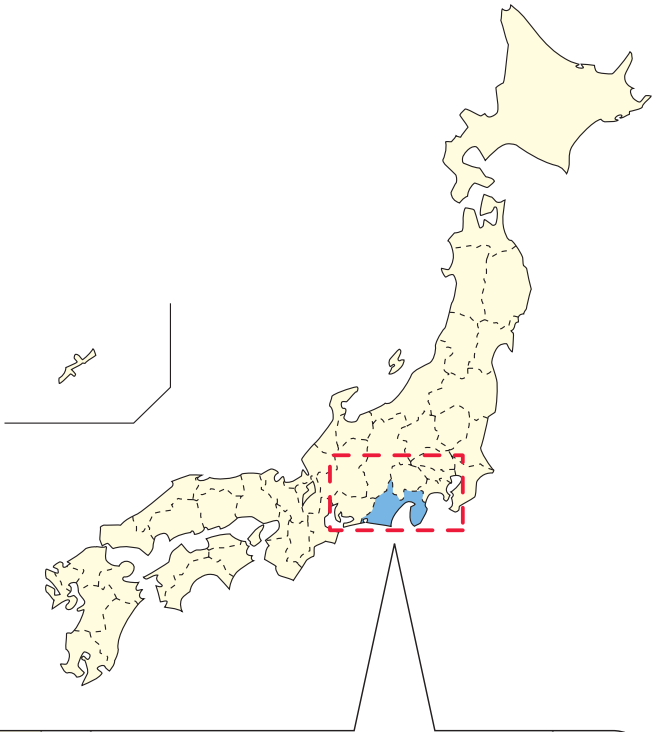
- |   |                                       |
|---|---------------------------------------|
| ① Headquarters Building   | ⑮ Gymnasium                           |
| ② University Hospital   | ⑯ Martial Arts Hall                   |
| ③ Clinical Lecture Building   | ⑰ Kyudo Ground                        |
| ④ Translational Research Center                                       | ⑱ Swimming Pool                       |
| ⑤ Collaboration Center for Medical Innovation<br>PET-CT Facilities    | ⑲ Tennis Court                        |
| ⑥ Nursing Faculty Building  | ⑳ Soccer / Rugby Ground               |
| ⑦ Basic and Clinical Research Building Annex                          | ㉑ Baseball Ground                     |
| ⑧ Basic and Clinical Research Building                                | ㉒ Center for Medical Waste Management |
| ⑨ Experimental Animals Institute                                      | ㉓ International Residence             |
| ⑩ Educational Building  | ㉔ University Residence                |
| ⑪ Welfare Facilities  | ㉕ Cenotaph                            |
| ⑫ University Library  | ㉖ Funaokayama University Residence    |
| ⑬ Medical Photonics Research Center                                   | ㉗ Handayama University Residence      |
| ⑭ Collaboration Center for Medical Innovation<br>Cyclotron Facilities | ㉘ Handayama Hall                      |

# LOCATION MAP

Hamamatsu University School of Medicine is located approximately 10.6km north of Hamamatsu Station.

● **Commuting Guide at the Station's Bus Terminal Located near the North Entry of Hamamatsu Station**

Enter Bus	Bus Terminal	Route Number	Route Name	Time Required
	Stop 13	50	Shiyakusho・Yamanote Line Bound for Medical School	About 35 minutes



◇ **Transportation <Railway>**

- Tokyo — Hamamatsu (Shinkansen Hikari) — 1 hour 30 minutes
- Nagoya — Hamamatsu (Shinkansen Hikari) — 30 minutes
- Kyoto — Hamamatsu (Shinkansen Hikari) — 1 hour 10 minutes
- Shin Osaka — Hamamatsu (Shinkansen Hikari) — 1 hour 25 minutes



National University Corporation

## Hamamatsu University School of Medicine

431-3192

1-20-1 Handayama, Higashi-ku, Hamamatsu, Shizuoka, Japan

Tel: +81-53-435-2111

<http://www.hama-med.ac.jp/>