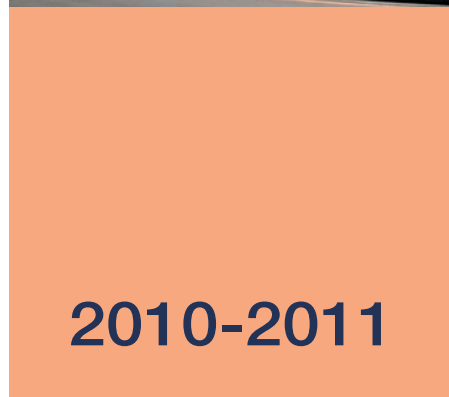




National University Corporation
Hamamatsu University
School of Medicine



2010-2011

Message from the President

Six years have passed since this university's incorporation and renaming as National University Corporation, Hamamatsu University School of Medicine but our original vision and goals remain unchanged. They are: (1) to educate our students to be excellent clinicians and highly creative researchers; (2) to practice medicine on a patient-first basis; and (3) to play a key role in developing community health care.

Since its inception, we have graduated 3,068 medical students and 824 nursing students from our university to meet the medical needs of Shizuoka prefecture and beyond our borders. However, from 2010, we will admit 120 new medical students a year because of a national plan to meet the increasing need for medical doctors all over Japan. In addition, more than 1,055 students, including 477 doctors evaluated only on theses, have been awarded medical doctorate degrees as well as more than 128 nurses awarded a Master's degree in nursing.

Our massive expansion and renewal plan for our University Hospital, which was established in 1977, continues on schedule. Last year, the new wards for in-patients were completed and became operational, while renewal of out-patients wards is ongoing. The hospital now has 609 beds and 34 clinical services units to fulfill our aim to provide diagnosis and treatment services which have strong points not only in Hamamatsu city and Shizuoka prefecture but also in Japan.

Finally, our Photon Medical Research Center which studies the medical application of photonics (photon- or light-related science and technology) and light-related disorders since its establishment in 1991 has continued its cooperation with enterprises such as Hamamatsu Photonics, Ltd to develop cutting-edge technologies and treatments.

Under my leadership, this university's overall goal in all these endeavors is to strengthen our contributing to the improvement of human health and well-being and to expand our efforts in the fields of education, clinical practice and research. I look forward to meeting these goals in the years ahead.

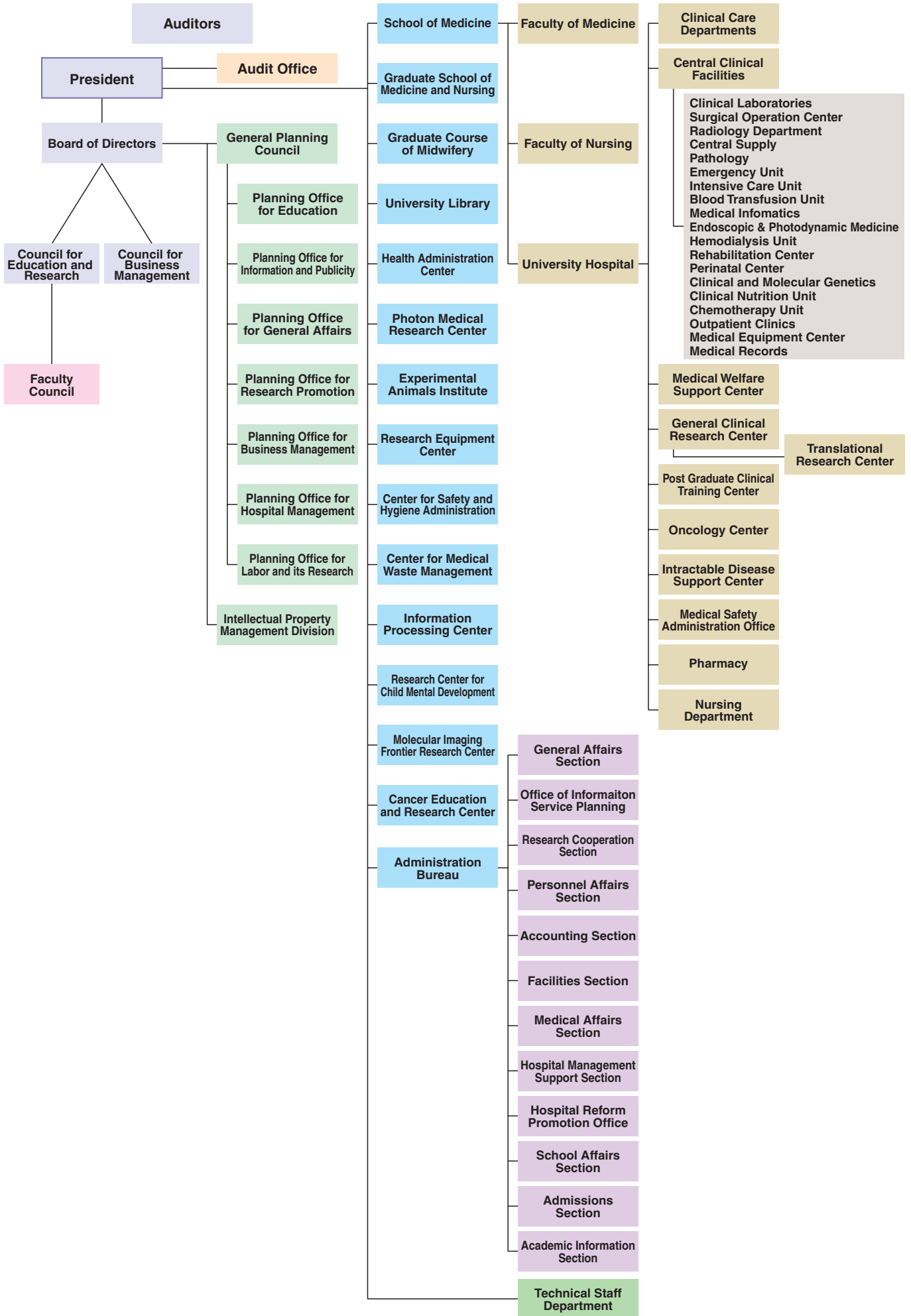


PRESIDENT
NAKAMURA, Satoshi

HISTORY

1974	June 7	Hamamatsu University School of Medicine was founded.
1977	Apr. 18	The University Hospital was established.
1980	Apr. 1	Graduate School of Medicine, Doctoral Degree Program, was established.
1995	Apr. 1	The Faculty of Nursing was established.
1999	Apr. 1	The Master's Degree Program of our Graduate School of Nursing was established.
2004	Apr. 1	The National University Corporation Hamamatsu University School of Medicine started.
2008	Apr. 1	Graduate Course of Midwifery was established.

ORGANIZATION



ADMINISTRATIVE OFFICERS

PRESIDENT	NAKAMURA, Satoshi		
DIRECTOR	(for Education and International Exchange) KOIDE, Yukio (for Administration and Collaboration Development) HIRUMA, Akira	(for Personal Evaluation, Labor and Safety Control) SUZUKI, Osamu	(for Finance and Hospital) TAKIGAWA, Masahiro
AUDITORS	YAMAZAKI, Katsuyasu	TSUDA, Hiroshi	
VICE-PRESIDENTS	NAKAHARA, Daiichiro	MINOSHIMA, Shinsei	TAKAHASHI, Seio
COUNCIL FOR BUSINESS MANAGEMENT	NAKAMURA, Satoshi HIRUMA, Akira SARUTA, Takao MIMURO, Kenichiro	SUZUKI, Osamu TAKAHASHI, Seio SUZUKI, Katsuhiko MURAMOTO, Junko	TAKIGAWA, Masahiro ITO, Shuji NAGAI, Yoshiyuki
COUNCIL FOR EDUCATION AND RESEARCH	NAKAMURA, Satoshi TAKIGAWA, Masahiro MINOSHIMA, Shinsei HARIYAMA, Takahiko SAKAHARA, Harumi	KOIDE, Yukio NAKAHARA, Daiichiro UMEMURA, Kazuo FUKUDA, Atsuo SATO, Shigehito	SUZUKI, Osamu HAYASHI, Hideharu URANO, Tetsumei OZONO, Seiichiro NAGATA, Toshi

● SCHOOL OF MEDICINE

FACULTY OF MEDICINE

BASIC SCIENCES

INTEGRATED HUMAN SCIENCES

- **ETHICS** **PROFESSOR** MORISHITA, Naoki
- **PSYCHOLOGY** **PROFESSOR** NAKAHARA, Daiichiro
- **ANTHROPOLOGY** **PROFESSOR** SATO, Hiroaki
- **MATHEMATICS** **PROFESSOR** NODA, Akio
- **PHYSICS** **PROFESSOR** SASAKURA, Hiroyuki
- **CHEMISTRY** **PROFESSOR** FUJIMOTO, Chuzo
- **BIOLOGY** **PROFESSOR** HARIYAMA, Takahiko
- **ENGLISH** **PROFESSOR** ENDO, Yukihide
- **JAPANESE & JAPANESE AFFAIRS** **PROFESSOR** SATO, Kiyochi
- **LIFE SCIENCE** **PROFESSOR** HORIUCHI, Kentaro

ANATOMY

- **PHYSIOLOGY 1**
- **PHYSIOLOGY 2**
- **BIOCHEMISTRY 1**
- **BIOCHEMISTRY 2**
- **PATHOLOGY 1**
- **PATHOLOGY 2**
- **PHARMACOLOGY**
- **INFECTIOUS DISEASES**
- **COMMUNITY HEALTH AND PREVENTIVE MEDICINE**
- **LEGAL MEDICINE**

- PROFESSOR** SATO, Kohji
- PROFESSOR** FUKUDA, Atsuo
- PROFESSOR** URANO, Tetsumei
- PROFESSOR** KITAGAWA, Masatoshi
- PROFESSOR** MIURA, Naoyuki
- PROFESSOR** SUGIMURA, Haruhiko
- PROFESSOR** IWASHITA, Toshihide
- PROFESSOR** UMEMURA, Kazuo
- PROFESSOR** SUZUKI, Tetsuro
- PROFESSOR** OJIMA, Toshiyuki
- ASSOCIATE PROFESSOR** WATANABE, Kanako

CLINICAL SCIENCES

INTERNAL MEDICINE 1	PROFESSOR	MIYAJIMA, Hiroaki	OTORHINOLARYNGOLOGY	PROFESSOR	MINETA, Hiroyuki
INTERNAL MEDICINE 2	PROFESSOR	NAKAMURA, Hirotohi	RADIOLOGY	PROFESSOR	SAKAHARA, Harumi
INTERNAL MEDICINE 3	PROFESSOR	HAYASHI, Hideharu	ANESTHESIOLOGY & RESUSCITATION	PROFESSOR	SATO, Shigehito
PSYCHIATRY	PROFESSOR	MORI, Norio	OBSTETRICS & GYNECOLOGY	PROFESSOR	KANAYAMA, Naohiro
SURGERY 1	PROFESSOR	SHIYA, Norihiko	PEDIATRICS	PROFESSOR	OHZEKI, Takehiko
SURGERY 2	PROFESSOR	KONNO, Hiroyuki	DENTISTRY & ORAL & MAXILLOFACIAL SURGERY	ASSOCIATE PROFESSOR	KATO, Huminori
NEUROSURGERY	PROFESSOR	NAMBA, Hiroki	LABORATORY MEDICINE	PROFESSOR	MAEKAWA, Masato
ORTHOPEDIC SURGERY	PROFESSOR	MATSUYAMA, Yukihiro	CLINICAL PHARMACOLOGY & THERAPEUTICS MEDICINE	PROFESSOR	WATANABE, Hiroshi
DERMATOLOGY	ASSOCIATE PROFESSOR	HASHIZUME, Hideo	EMERGENCY MEDICINE	PROFESSOR	AOKI, Katsunori
UROLOGY	PROFESSOR	OZONO, Seiichiro	MOLECULAR MEDICINE	PROFESSOR	KANAOKA, Shigeru
OPHTHALMOLOGY	PROFESSOR	HOTTA, Yoshihiro	REGIONAL MEDICAL MANAGEMENT STUDIES	PROFESSOR	YAMAOKA, Taiji

FACULTY OF NURSING

BASIC NURSING	PROFESSOR	WATANABE, Yasuhide	CLINICAL NURSING	PROFESSOR	NOZAWA, Akiko
	PROFESSOR	MIURA, Katsutoshi		PROFESSOR	OOMI, Sakie
	PROFESSOR	NAGATA, Toshi	COMMUNITY NURSING	PROFESSOR	TATSUMI, Asami
	PROFESSOR	KATO, Kazuko		PROFESSOR	SUZUKI, Mizue

GRADUATE COURSE OF MIDWIFERY

ASSOCIATE PROFESSOR KUBOTA, Kimie

PHOTON MEDICAL RESEARCH CENTER

CELL IMAGING	PROFESSOR	TERAKAWA, Susumu	MEDICAL PHOTOBIOLOGY	PROFESSOR	MINOSHIMA, Shinsei
GENOME BIOPHOTONICS	PROFESSOR	MAGATA, Yasuhiro	PHOTOCHEMICAL MEDECINE	PROFESSOR	OKAZAKI, Shigetoshi

RESEARCH CENTER FOR CHILD MENTAL DEVELOPMENT

PROFESSOR TAKEI, Noriyoshi

PROFESSOR TORIZUKA, Tatsuo

MOLECULAR IMAGING FRONTIER RESEARCH CENTER

HUMAN IMAGING	PROFESSOR	OUCHI, Yasuomi
MOLECULAR ANATOMY	PROFESSOR	SETOU, Mitsutoshi

● UNIVERSITY HOSPITAL

DIRECTOR	TAKIGAWA, Masahiro	VICE-DIRECTORS	[for Management Reform] KOBAYASHI, Toshihiko	[for Clinical Practice & Teaching] SAKAHARA, Harumi	[for Risk Management] KONNO, Hiroyuki	[for Patient Service] KUWABARA, Yumie
-----------------	--------------------	-----------------------	---	--	--	--

CLINICAL CARE DEPARTMENTS					
HEADS					
GENERAL MEDICINE	TAKIGAWA, Masahiro				
INTERNAL MEDICINE 1 DIVISION OF GASTROENTEROLOGY DIVISION OF NEPHROLOGY DIVISION OF NEUROLOGY	MIYAJIMA, Hiroaki IKUMA, Mutsuhiro FUJIGAKI, Yoshihide MIYAJIMA, Hiroaki	INTERNAL MEDICINE 2 DIVISION OF ENDOCRINOLOGY & METABOLISM DIVISION OF RESPIRATOLOGY DIVISION OF HEPATOLOGY	NAKAMURA, Hirotohi NAKAMURA, Hirotohi CHIDA, Kingo NAKAMURA, Hirotohi	INTERNAL MEDICINE 3 DIVISION OF CARDIOLOGY DIVISION OF HEMATOLOGY DIVISION OF IMMUNOLOGY & RHEUMATOLOGY	HAYASHI, Hideharu HAYASHI, Hideharu OHNISHI, Kazunori OGAWA, Noriyoshi
PSYCHIATRY	MORI, Norio	SURGERY 1 DIVISION OF CARDIOVASCULAR SURGERY DIVISION OF THORACIC SURGERY DIVISION OF PEDIATRIC SURGERY DIVISION OF BREAST SURGERY DIVISION OF GENERAL SURGERY (INCLUDING ENDOSCOPIC SURGERY)	SHIYA, Norihiko SHIYA, Norihiko FUNAI, Kazuhito WADA, Hidetoshi SHIYA, Norihiko WADA, Hidetoshi	SURGERY 2 DIVISION OF ESOPHAGO-GASTRIC SURGERY DIVISION OF COLORECTAL SURGERY DIVISION OF HEPATO-PANCREATICO-BILIARY SURGERY DIVISION OF VASCULAR SURGERY	KONNO, Hiroyuki KONNO, Hiroyuki NAKAMURA, Toshio SAKAGUCHI, Takanori UNNO, Naoki
PEDIATRICS	OHZEKI, Takehiko				
NEUROSURGERY	NAMBA, Hiroki	ORTHOPEDIC SURGERY	MATSUYAMA, Yukihiro	DERMATOLOGY	TAKIGAWA, Masahiro
UROLOGY	OZONO, Seiichiro	OPHTHALMOLOGY	HOTTA, Yoshihiro	OTORHINOLARYNGOLOGY	MINETA, Hiroyuki
OBSTETRICS & GYNECOLOGY	KANAYAMA, Naohiro	RADIOLOGY	SAKAHARA, Harumi	ANESTHESIOLOGY & RESUSCITATION	SATO, Shigehito
DENTISTRY&ORAL & MAXILLOFACIAL SURGERY	TAKIGAWA, Masahiro	REHABILITATION	MIZUSHIMA, Takashi	PLASTIC SURGERY	FUKAMIZU, Hidekazu
CLINICAL PHARMACOLOGY & THERAPUTICS MEDICINE	WATANABE, Hiroshi				
CENTRAL CLINICAL FACILITIES					
HEADS					
CLINICAL LABORATORIES	MAEKAWA, Masato	SURGICAL OPERATION CENTER	SHIRAISHI, Yoshito	RADIOLOGY DEPARTMENT	SAKAHARA, Harumi
CENTRAL SUPPLY	TANI, Shigeki	PATHOLOGY	BABA, Satoshi	EMERGENCY UNIT	AOKI, Katsunori
INTENSIVE CARE UNIT	SATO, Shigehito	BLOOD TRANSFUSION UNIT	TAKESHITA, Akihiro	MEDICAL INFORMATICS	KIMURA, Michio
ENDOSCOPIC & PHOTODYNAMIC MEDICINE	KONNO, Hiroyuki	HEMODIALYSIS UNIT	KATO, Akihiko	REHABILITATION CENTER	MIZUSHIMA, Takashi
PERINATAL CENTER	KANAYAMA, Naohiro	CLINICAL AND MOLECULAR GENETICS	MAEKAWA, Masato	CLINICAL NUTRITION UNIT	KANAYAMA, Naohiro
CHEMOTHERAPY UNIT	OHNISHI, Kazunori	OUTPATIENT CLINICS	OZONO, Seiichiro	MEDICAL EQUIPMENT CENTER	MINETA, Hiroyuki
MEDICAL RECORDS	KIMURA, Michio				
MEDICAL WELFARE SUPPORT CENTER		GENERAL CLINICAL RESEARCH CENTER		POST GRADUATE CLINICAL TRAINING CENTER	
HEAD	TAKIGAWA, Masahiro	HEAD	WATANABE, Hiroshi	HEAD	SAKAHARA, Harumi
ONCOLOGY CENTER		INTRACTABLE DISEASE SUPPORT CENTER		MEDICAL SAFETY ADMINISTRATION OFFICE	
HEAD	OHNISHI, Kazunori	HEAD	MIYAZIMA, Hiroaki	HEAD	KONNO, Hiroyuki
PHARMACY		NURSING DEPARTMENT			
HEAD	KAWAKAMI, Junichi	HEAD	KUWABARA, Yumie		

STAFF

CLASSIFICATION	ADMINISTRATION BUREAU	SCHOOL OF MEDICINE	UNIVERSITY HOSPITAL	HEALTH ADMINISTRATION CENTER	PHOTON MEDICAL RESEARCH CENTER	EXPERIMENTAL ANIMALS INSTITUTE	RESEARCH EQUIPMENT CENTER	CENTER FOR MEDICAL WASTE MANAGEMENT	RESEARCH CENTER FOR CHILD MENTAL DEVELOPMENT	MORECULAR IMAGING FRONTIER RESEARCH CENTER	CANCER EDUCATION AND RESEARCH CENTER	INTELLECTUAL PROPERTY MANAGEMENT DIVISION	TOTAL
PRESIDENT	1												1
DIRECTORS	4												4
AUDITORS	2												2
PROFESSORS		47	3		4				2	2			58
ASSOCIATE PROFESSORS		33	10		2	1	1		3	1			51
SENIOR ASSISTANT PROFESSORS		9	37	1									47
ASSISTANT PROFESSORS (RESEARCH ASSOCIATES)		80	49		5	2			12	5	3	2	158
TOTAL	7	169	99	1	11	3	1	0	17	8	3	2	321
CLERKS & TECHNICIANS	137	15	593	1		2	17	2					767
GRAND TOTAL	144	184	692	2	11	5	18	2	17	8	3	2	1,088

Data on May 1, 2010

SENIOR RESIDENTS	JUNIOR RESIDENTS	TOTAL
138	23	161

Data on May 1, 2010



SCHOOL OF MEDICINE

Faculty of Medicine

Since its establishment in 1974 the policy of the Faculty of Medicine has been to achieve three chief objectives: firstly, to produce excellent clinicians and highly creative researchers; secondly, to promote original research and innovation in medical techniques; and thirdly, to play a leading role in local health care by practicing medicine for the greatest possible benefits of patients. These objectives aim to contribute to the advancement of the welfare of all mankind.

Based on this policy, many excellent clinicians, who graduated from our university, are contributing to medical treatments both in Shizuoka Prefecture and nationwide. Our graduates are also engaging in state-of-the-art research at our University. New technologies are also being adopted by the Faculty in fields such as treatments of cancers and the development of advanced diagnostic techniques. In particular, The Photon Medical Research Center was established for the promotion of advanced studies in the field of medical photonics.

Finally, our graduates play active roles not only as clinicians, medical researchers and medical educators, but also as industrial physicians and medical welfare administrators.



Faculty of Nursing

The Faculty of Nursing aims to develop the broad range of skills of nursing including upgrading nursing skills, promoting specialization in medical treatments, nursing for the elderly and handicapped people, and the general nursing needed for local community. Students develop their scientific thinking and kind consideration for others during 4 years of student life.

Graduates can continue their professional development in the Master's Program of the Graduate School of Nursing to pursue careers in nursing education and as researchers.

ADMISSIONS AND THE PRESENT NUMBER OF STUDENTS

School			1st yr.	2nd yr.	3rd yr.	4th yr.	5th yr.	6th yr.	Total
FACULTY OF MEDICINE	Admission Quota 120 (5)*	Male	83	78	77(5)	68(2)	76(4)	67(2)	449(13)
	Capacity 625 (25)*	Female	36	32	27(3)	27(1)	26(1)	32(2)	180(7)
		Total	119	110	104(8)	95(3)	102(5)	99(4)	629(20)
FACULTY OF NURSING	Admission Quota 70 (10)**	Male	5	5	1(0)	4(0)			15(0)
	Capacity 260 (20)**	Female	58	60	66(10)	67(10)			251(20)
		Total	63	65	67(10)	71(10)			266(20)

() * The numbers in parentheses indicate the quotas for 2nd - year transfer students included in the total.

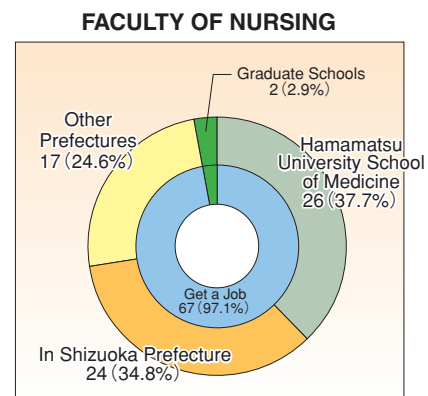
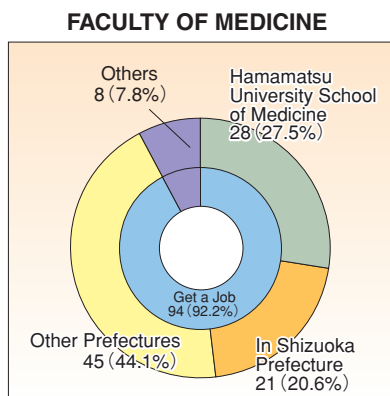
() ** The numbers in parentheses indicate the quotas for 3rd - year transfer students included in the total.

Data on May 1, 2010

● NUMBERS OF GRADUATES

Year	FACULTY OF MEDICINE							FACULTY OF NURSING						
	1979~2004	2005	2006	2007	2008	2009	Total	1998~2004	2005	2006	2007	2008	2009	Total
Male	1,910	76	59	81	58	67	2,251	17	2	0	5	8	4	36
Female	645	40	27	31	39	35	817	456	70	71	65	61	65	788
Total	2,555	116	86	112	97	102	3,068	473	72	71	70	69	69	824

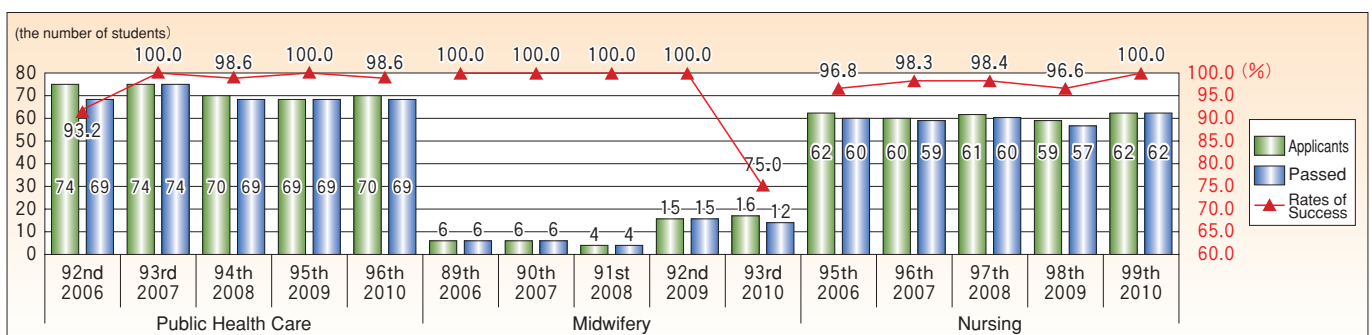
● LOCATIONS OF GRADUATES (CLASS 2009)



● SUCCESS RATES IN THE NATIONAL MEDICAL PRACTITIONERS QUALIFYING EXAMINATION

	New Graduates			Reexaminees			Total			National Ranking
	Applicants	Passed	Rate of success	Applicants	Passed	Rate of success	Applicants	Passed	Rate of success	
100th 2006	116	107	92.2	9	5	55.6	125	112	89.6	50
101st 2007	86	85	98.8	13	7	53.9	99	92	92.9	21
102nd 2008	112	109	97.3	6	4	66.7	118	113	95.8	11
103rd 2009	97	95	97.9	4	1	25.0	101	96	95.0	21
104th 2010	102	96	94.1	4	2	50.0	106	98	92.5	24

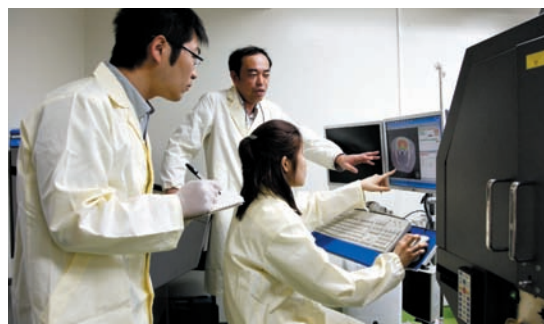
● SUCCESS RATES IN THE NATIONAL MEDICAL EXAMINATIONS FOR PUBLIC HEALTH CARE, MIDWIFERY AND NURSING



GRADUATE SCHOOL

■ Doctoral Degree Program in Graduate School of Medicine

This doctoral program is composed of two courses: 1) medical researcher training course, and 2) physician scientist training course. These courses have been prepared because both medical researchers, who possess excellent research ability and creativity, and physician scientists, who are competent in patient care and research, are required to support the international community in the 21st century. It is undeniable that collaborations based on these courses must create unique research areas in our university.



■ Master's Degree Program in Graduate School of Nursing



The aim of this program is to develop highly advanced nursing specialists who will acquire advanced practical nursing technologies and research techniques, apply them to their individual fields of specialization, and provide better health care to individuals and communities based on ethics. High quality care provided by such advanced nursing specialists is required in modern society because of developments in medical technologies, our rapidly aging society, and awareness of quality of life.

The research course of health science is also designed to develop new theories and techniques.

● ADMISSIONS AND THE PRESENT NUMBER OF STUDENTS

DOCTORAL DEGREE PROGRAM

Major			1st yr.	2nd yr.	3rd yr.	4th yr.	Total
ADVANCED PHOTO MEDICINE	Admission Quota 11	Male	11 (2)	6	6	8	31
		Female	7 (6)	7	0	1	15
	Capacity 44	Total	18	13	6	9	46
INTEGRATED FUNCTIONAL MEDICINE	Admission Quota 5	Male	7 (3)	3	3 (1)	6	19
		Female	1	0	3	1	5
	Capacity 20	Total	8	3	6	7	24
FRONTIER MEDICINE	Admission Quota 8	Male	9	9	13 (1)	15	46
		Female	2	3 (1)	3	4	12
	Capacity 32	Total	11	12	16	19	58
INFECTIOUS DISEASE CONTROL AND PREVENTIVE MEDICINE	Admission Quota 6	Male	0	2	1	0	3
		Female	0	2	4	1 (1)	7
	Capacity 24	Total	0	4	5	1	10

The numbers in parentheses indicate those students enrolled in October included in the total.

Data on May 1, 2010

MASTER'S DEGREE PROGRAM

Major			1st yr.	2nd yr.	Total
NURSING	Admission Quota 16	Male	3	2	5
	Capacity 32	Female	14	31	45
		Total	17	33 (10)	50

The number in parentheses indicates those students remaining in the same grade included in the total.

Data on May 1, 2010

● DEGREES AWARDED

	1983~2003	2004	2005	2006	2007	2008	2009
Ph. D. (doctoral course)	424	21	26	23	21	35	28
Ph. D. (thesis only)	390	10	27	13	14	9	14
Master of Nursing (M.A.)	52	14	14	7	17	15	9

Data on May 1, 2010

● RESEARCH STUDENTS

	2004	2005	2006	2007	2008	2009	2010
Male	35	41	30	33	27	34	26
Female	7	5	7	8	10	6	9

Data on May 1, 2010

GRADUATE COURSE OF MIDWIFERY

Graduate course of Midwifery was established in April 2008, with the aim of supporting local perinatal care and training the students to contribute to the development of Mother-Child health. This course graduates the midwives with high-quality skills in maternity treatments and practical abilities, in one-year of instruction based on "Women's lifetime health and gender rights."

	Admission Quota	Capacity	1st yr.
GRADUATE COURSE OF MIDWIFERY	16	16	16

Data on May 1, 2010

JOINT-USE FACILITIES FOR EDUCATION AND RESEARCH

Health Administration Center

DIRECTOR HAYASHI, Hideharu

This Center contributes to the maintenance and promotion of the health of students and the staff, and thus to the achievement of student education and various activities of the university staff. We also conducts annual medical checks and medical consultations on both physical and mental health, as well as investigations of health problems.



Photon Medical Research Center

DIRECTOR MINOSHIMA, Shinsei

The Center was established in 1991, and is studying the medical applications of photonics (photon- or light-related science and technology) and light-related disorders. The ongoing research projects include: (i) elucidation of the mechanism of life and death of cells by making use of optical imaging techniques that visualize the behaviors of cells and biomolecules; (ii) development of novel probes (tracers) for disease diagnosis by molecular imaging using PET; (iii) genomic/genetic analyses and construction of a database for various disease-related proteins; and (iv) development of photo dynamic treatment methods for cancer therapy. The Department of Photochemical Medicine is endowed by Hamamatsu Photonics K.K.



Experimental Animals Institute

DIRECTOR UMEMURA, Kazuo

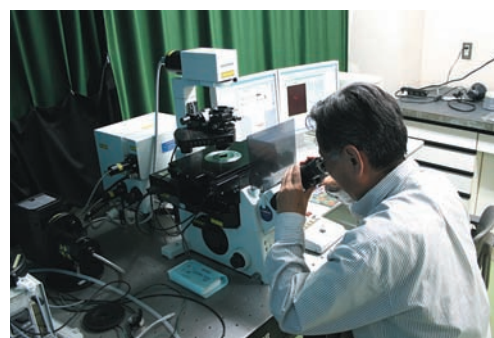
The Experimental Animals Institute established in 1983 is providing researchers with subjects for animal experiments in basic medical research. The institute is also contributing to education through classes on animal experimentation and graduation-thesis research. In addition, laboratory animal science is being promoted by developing many mutant mouse strains as animal models for human diseases using originally developed methods, and providing them to researchers.



Research Equipment Center

DIRECTOR URANO, Tetsumei

The Research Equipment Center directly contributes to the advancement of education and research in biomedical sciences. The Center consists of 16 laboratories including RI facilities. The staff of the Center are experts in managing sophisticated analytical equipment and collaborate with researchers. In the RI facilities, technical training for the safe handling of radioisotopes is conducted.



Center for Safety and Hygiene Administration

DIRECTOR SUZUKI, Osamu

The Center was founded in April 2003. The Center's primary missions are to draft plans to achieve projects concerning the University's hygiene and safety and to seek the thorough implementation of the guidelines for the prevention of environmental pollution, health hazards, accidents and disasters derived from the University's educational and research activities. The important objectives are: to assess the working environments according to the Industrial Safety and Health Law and other related rules and regulations, to promote the safety and health of workers and to secure a safer and healthier working environment.



Center for Medical Waste Management

DIRECTOR FUJIMOTO, Chuzo

The Center manages the disposal of waste liquids and foul water containing various hazardous substances discharged from medical laboratories at the University. Education is also given about waste materials and waste water treatments to students and the staff.



Information Processing Center

DIRECTOR KIMURA, Michio

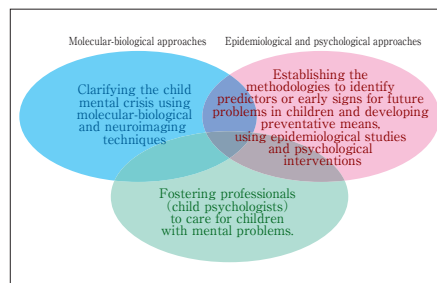
Information Processing Center provides and operates the information infrastructures of the University, which comprises the university network, mail servers, web servers, IT practice and learning facility, etc. Wireless LAN hot spots are set everywhere on the campus; the IT practice and learning facility enables bidirectional display and operation between teachers and learners. The Center continues to provide state-of-the-art IT infrastructures to the University.



Research Center for Child Mental Development

DIRECTOR MORI, Norio

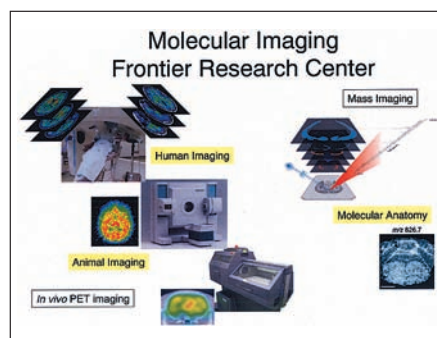
The Center was founded in 2006 as a joint center with the participation of Osaka University and Hamamatsu University School of Medicine, followed by the welcomed participation of Kanazawa University in 2008. As a leading institute in biological, clinical, and educational research for child development, the major goals of the Center include investigation of biological, medical, and psychosocial backgrounds of abnormalities in cognitive and emotional status during childhood, and development of efficient educational and clinical intervention methods that are helpful to children with mental challenges. It is also the Center's mission that, in association with the United Graduate School of Medicine in Osaka, Hamamatsu and Kanazawa, professionals such as teachers and clinical psychologists learn how to help those children.



Molecular Imaging Frontier Research Center

DIRECTOR MAGATA, Yasuhiro

Advancement of molecular imaging technology that visualizes a specific reaction or compound in a living body has been remarkable in recent years. Even human mental activity may be understood as molecular activities in the future by integrating genetic information, mass analysis imaging and macro level imaging such as PET and MRI. On these bases, Molecular Imaging Frontier Research Center was established in January, 2007 at our university. This center aims to promote molecular imaging research and train experts in this field by strengthening the basic and clinical imaging research in the Hamamatsu area and promoting joint research relationships with other research institutes.



Cancer Education and Research Center

DIRECTOR OHNISHI, Kazunori

The mission of the Cancer Education and Research Center is to train physicians who will become leaders in comprehensive cancer therapy, and also to promote advanced research in cancer. This center was founded in October 2007, and opened graduate courses for training cancer professionals in cooperation with Tokai Gann (Cancer) Professional Plan. This program aims at establishing medical oncology teams matching the global standard, and its main institution is Nagoya University School of Medicine. The graduate course consists of 3 courses, clinical oncology, radiotherapy and cancer pharmacology. An intensive course runs concurrently with the graduate course, in which senior physicians can learn the practice of modern cancer management.



INTERNATIONAL EXCHANGES

● UNIVERSITIES WITH AGREEMENTS FOR COOPERATION

University (Country)	Date of Agreement Signed	Cooperation Contents
CHINA MEDICAL UNIVERSITY (CHINA)	1988. 4.29	SISTER SCHOOL
KYUNGPOOK NATIONAL UNIVERSITY SCHOOL OF MEDICINE (KOREA) KYUNGPOOK NATIONAL UNIVERSITY COLLEGE OF NURSING (KOREA)	1992. 9. 7 2005. 9.23	ACADEMIC EXCHANGE
SHANGHAI JIAO TONG UNIVERSITY SCHOOL OF MEDICINE (CHINA)	2000. 3.24	ACADEMIC EXCHANGE
FACULTY OF MEDICINE, ALBERT-LUDWIGS UNIVERSITY OF FREIBURG (GERMANY)	2003. 6.30	ACADEMIC EXCHANGE
HENAN COLLEGE OF TRADITIONAL CHINESE MEDICINE (CHINA)	2003.12. 8	ACADEMIC EXCHANGE
MEDICAL UNIVERSITY OF BIALYSTOK (POLAND)	2004. 4.19	ACADEMIC EXCHANGE
UNIVERSITY OF DHAKA (BANGLADESH)	2004.11.12	ACADEMIC EXCHANGE
SHAHJALAL UNIVERSITY OF SCIENCE AND TECHNOLOGY (BANGLADESH)	2004.11.12	ACADEMIC EXCHANGE
BANGABANDHU SHEIKH MUJIB MEDICAL UNIVERSITY (BANGLADESH)	2004.11.12	ACADEMIC EXCHANGE
GUANGXI MEDICAL UNIVERSITY (CHINA)	2004.11.21	ACADEMIC EXCHANGE
MEDICAL UNIVERSITY OF WARSAW (POLAND)	2010. 4. 1	ACADEMIC EXCHANGE
MEDICAL UNIVERSITY OF LUBLIN (POLAND)	2010. 4. 5	ACADEMIC EXCHANGE

Data on May 1, 2010

● INTERNATIONAL STUDENTS

Country	Undergraduate Students		Graduate Students		Research Students		Total
	Government	Private	Government	Private	Government	Private	
CHINA				12			12
EGYPT				1			1
VIETNAM		1					1
BANGLADESH			1	1			2
POLAND				1			1
Total	0	1	1	15	0	0	17

Data on May 1, 2010

● FOREIGN TEACHERS & RESEARCHERS ACCEPTED

Foreign Professor	1
Part-time Lecturers	5
Visiting Foreign Researchers, etc.	14
Total	20

Fiscal Year 2009

● INTERNATIONAL RESIDENCE

Building Classification	Single Type		Family Type	
	Area	Count	Area	Count
Architectural Area	206㎡		147㎡	
Total Building Area	554㎡		567㎡	
Room Type (Area)	Single Rooms (14㎡)	20	Couple Rooms (40㎡)	6
	Meeting Room (19㎡)	1	Family Rooms (59㎡)	4

UNIVERSITY LIBRARY

● LIBRARY OPENING HOURS

Monday to Friday 9:00~20:00

Saturday & Sunday 10:00~17:00

24 hour access to the library is available to students and faculty members by registering ID cards.



● UTILIZATION

The Number of Visitors	Regular Hours				After Hours				Total			
	Intramural	127,137	Extramural	1,671	Intramural	33,081	Extramural	66	Intramural	160,218	Extramural	1,737
The Number of Items Borrowed	Books				Journals				AV Materials			
	8,128				721				130			
Copying Service	Requests Accepted				Requests Made to Outside				Total			
	6,075				2,760				8,835			

Fiscal Year 2009

● LIBRARY COLLECTION

Classification	Japanese	English	Total
Books	63,307	67,889	131,196
Journals	1,502	2,119	3,621
AV Materials	1,908		

Data on March 31, 2010

● BOOKS AND JOURNALS ACCEPTED

Classification	Japanese	English	Total
Books	2,465	705	3,170
Journals	208	183	391
AV Materials	45		
Electronic Journals	3,420		

Fiscal Year 2009



● CLINICAL ACTIVITIES

Number of Patients					
Clinical Care Departments	Outpatients		Inpatients		
	Total	Average per Day	Total	Average per Day	
General Medicine	1,543	6.4	—	—	
Internal Medicine 1	Gastroenterology	7,995	33.2	7,299	20.0
	Nephrology	5,845	24.3	4,969	13.6
	Neurology	3,101	12.9	2,150	5.9
Internal Medicine 2	Endocrinology & Metabolism	20,972	87.0	3,938	10.8
	Respiratology	10,124	42.0	8,598	23.6
	Hepatology	8,232	34.2	3,479	9.5
Internal Medicine 3	Cardiology	11,025	45.7	5,298	14.5
	Hematology	5,647	23.4	11,347	31.1
	Immunology & Rheumatology	4,757	19.7	2,532	6.9
Clinical Pharmacology & Therapeutics Medicine	720	3.0	29	0.1	
Psychiatry	17,583	73.0	9,666	26.5	
Pediatrics	13,306	55.2	11,293	30.9	
Surgery 1	Cardiovascular Surgery	2,018	8.4	7,209	19.8
	Thoracic Surgery	677	2.8	9	—
	Pediatric Surgery	444	1.8	167	0.5
	Breast Surgery	4,871	20.2	1,096	3.0
	General Surgery	1,363	5.7	2,046	5.6
Surgery 2	Esophago-Gastric Surgery	4,776	19.8	5,479	15.0
	Colorectal Surgery	3,994	16.6	4,214	11.5
	Hepato-Pancreatico-Biliary Surgery	3,275	13.6	4,308	11.8
	Vascular Surgery	3,014	12.5	3,528	9.7
Emergency Unit	2,946	12.2	812	2.2	
Endoscopic & Photodynamic Medicine	51	0.2	—	—	
Neurosurgery	8,706	36.1	8,600	23.6	
Orthopedic Surgery	17,320	71.9	11,633	31.9	
Rehabilitation	5,094	21.1	—	—	
Dermatology	19,056	79.1	4,927	13.5	
Urology	16,145	67.0	9,263	25.4	
Ophthalmology	17,616	73.1	6,381	17.5	
Otorhinolaryngology	14,543	60.3	7,434	20.4	
Obstetrics & Gynecology	14,925	61.9	10,094	27.7	
Radiology	5,984	24.8	3,167	8.7	
Anesthesiology & Resuscitation	3,397	14.1	132	0.4	
Plastic Surgery	3,802	15.8	3,057	8.4	
Clinical and Molecular Genetics	—	—	—	—	
Dentistry & Oral & Maxillofacial Surgery	10,909	45.3	3,167	8.7	
Total	275,776	1,144.3	167,321	458.4	

Fiscal Year 2009



NUMBER OF CLINICAL LAB TESTS						
Test Item	Urine and Other Body Fluids	Hematology	Clinical Chemistry	Pathology	Physiology	Collection of Blood and Other Body Fluids
Number	114,767	308,715	2,039,998	12,749	145,882	75,979
Test Item	Endocrinology	Serology	Bacteriology	Endoscopy	Others	Total
Number	61,226	247,606	20,650	8,339	59,892	3,095,803

Fiscal Year 2009

NUMBER OF SURGICAL OPERATIONS & ANAESTHESIAS	
Number of Operations	Total
	4,058
Number of Anaesthesia	Total
	9,527

Fiscal Year 2009

NUMBER OF EMERGENCY CASES						
Causes						Total
Diseases	Injuries				Pregnancy	
	Accidents			Total		
	Traffic Accidents	Poisoning	Others			
5,690	324	88	978	1,390	359	7,439

Fiscal Year 2009

NUMBER OF X-RAY EXAMINATION						
Method		X-Ray Radiography	X-Ray Fluoroscopy	X-Ray CT	MRI	Total
Number of Patients	Inpatients	29,401	1,736	5,942	1,932	39,011
	Outpatients	29,108	2,428	9,951	4,798	46,285
	Total	58,509	4,164	15,893	6,730	85,296

Fiscal Year 2009

NUMBER OF PATHOLOGICAL AUTOPSY			
	Male	Female	Total
Patients Who Died at our Hospital	153	97	250
Number Subjected to Autopsy	20	11	31
Autopsy Rate (%)	13.1	11.3	12.4
Autopsies Entrusted from Outside	0	0	0

Fiscal Year 2009

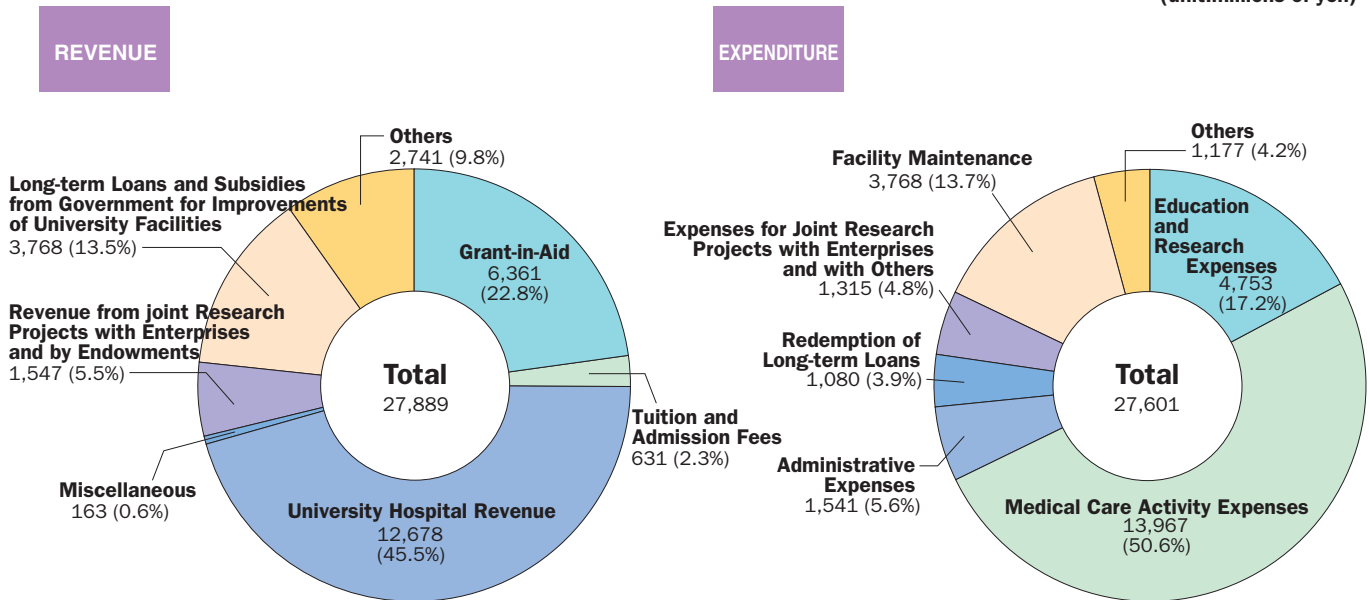
NUMBER OF BIRTHS			
	Full-Term Baby	Premature Baby	Total
Normal Deliveries	249	33 (3)	282 (3)
Abnormal Deliveries	112	48 (1)	160 (1)
Total	361	81 (4)	442 (4)

The numbers in parentheses indicate stillbirths included in the total.
Fiscal Year 2009

ACCOUNTS & PROPERTY

● FISCAL YEAR 2009

(unit:millions of yen)



● LAND AND BUILDINGS

Classification Item	Land	Building		Note
		Building Area	Total Area	
Main Buildings	265,154	9,743	21,788	Headquarters Building, Handayama Hall, Welfare Facilities, Gymnasium, Energy Center, Kendo and Judo Hall, University Library, International Residence, Japanese Archery Hall, Day Nursery, Parking Area, Others
School of Medicine		7,955	38,054	Lecture and Training Building, Basic and Clinical Research Building, Annex, Clinical Lecture Building, Radioisotope Laboratory, Experimental Animals Institute, Faculty of Nursing Building, Photon Medical Research Center, Others
University Hospital		15,801	82,305	University Hospital, MRI-CT Equipment Building, Central Medical Facilities Building, Parking Area, Others
Nurses' Residences		1,419	5,526	Funaokayama Residence 2 Buildings 129 Apartments
Faculty Staff Residences (2)		897	3,313	Handayama Residence 3 Buildings 60 Apartments
Faculty Staff Residences (1)	35,408	3,845	13,753	Main Residence 11 Buildings 198 Apartments The President 1 House
Faculty Staff Residences in Sanaru (1)	365	106	106	Vice-President 1 House
Faculty Staff Residences in Sanaru (2)	707	207	207	Vice-President • Secretary-General 2 Houses
Mikkabi Boathouse	502	114	114	Boathouse
Total	302,136	40,087	165,166	

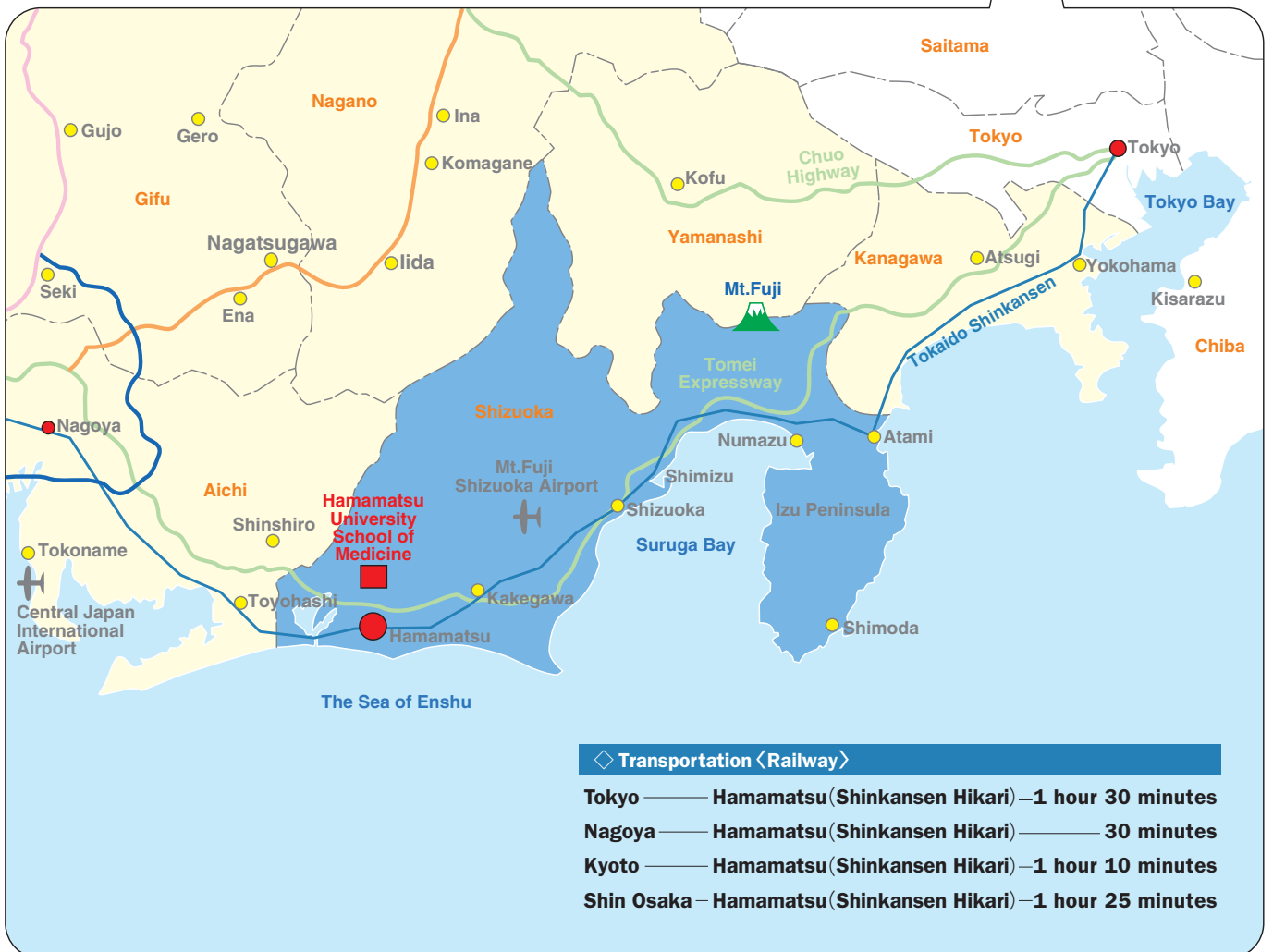
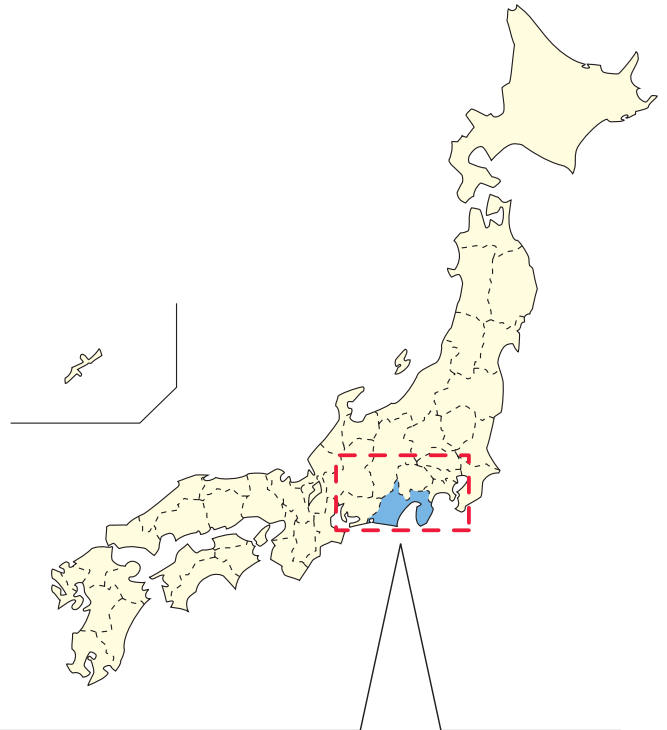
Data on May 1, 2010

LOCATION MAP

Hamamatsu University School of Medicine is located approximately 10.6km north of Hamamatsu Station.

● **Commuting Guide at the Station's Bus Terminal Located near the North Entry of Hamamatsu Station**

E n t r y B u s	Bus Terminal	Route Number	Route Name	Time Required
	Stop 13	50	Iwata · Yamanote Line Bound for Medical School	About 35 minutes
	Stop 13	57	Medical School Loop-Line (via City Hall · Hamamatsu Central Police Office)	About 30 minutes
	Stop 15	47	Medical School Loop-Line (via Aoi-cho)	About 40 minutes





- 1** University Hospital
- 2** Clinical Lecture Building • Health Administration Center
- 3** Headquarters Building
- 4** Bus Stop
- 5** Translational Research Center
- 6** Handayama Hall
- 7** Educational Building
- 8** Nursing Faculty Building
- 9** Basic and Clinical Research Building
- 10** Radioisotope Laboratory • Experimental Animals Institute
- 11** Welfare Facilities
- 12** University Library



AFFILIATED TEACHING HOSPITAL
Hamamatsu Medical Center

- 13 Photon Medical Research Center
- 14 International Residence
- 15 Disposal Center for Medical Waste

- 16 Baseball Ground
- 17 Soccer・Rugby Ground
- 18 Gymnasium

- 19 University Residence
- 20 Funaokayama University Residence
- 21 Handayama University Residence



National University Corporation

Hamamatsu University School of Medicine

431-3192

1-20-1 Handayama, Higashi-ku, Hamamatsu, Shizuoka, Japan

Tel: +81-53-435-2111

<http://www.hama-med.ac.jp/>