

National University Corporation
Hamamatsu University
School of Medicine
2014

40
Anniversary



CONTENTS

1	History
2	Message from the President
3	Organization
4	Administrative Officers
8	Staff
9	School of Medicine
11	Graduate School
12	Graduate Course of Midwifery
13	International Exchanges
14	Joint-Use Facilities for Education and Research
17	University Library
18	University Hospital
20	Accounts & Grants
21	Campus Map
22	Location Map

HISTORY

1974 June	7	Hamamatsu University School of Medicine was founded.
1977 April	18	The University Hospital was established.
1980 April	1	Graduate School of Medicine, Doctoral Degree Program, was established.
1995 April	1	The Faculty of Nursing was established.
1999 April	1	The Master's Degree Program of our Graduate School of Nursing was established.
2004 April	1	The National University Corporation Hamamatsu University School of Medicine started.
2008 April	1	Graduate Course of Midwifery was established.

Message from the President

Ten years have passed since this university's incorporation and renaming as National University Corporation, Hamamatsu University School of Medicine but our original vision and goals remain unchanged. They are: (1) to educate our students to be excellent clinicians and highly creative researchers; (2) to practice medicine on a patient-first basis; and (3) to play a key role in developing community health care.

Since its inception, we have graduated 3,460 medical students and 1,099 nursing students from our university to meet the medical needs of Shizuoka prefecture and beyond our borders. However, from 2010, we will admit 120 new medical students a year because of a national plan to meet the increasing need for medical doctors all over Japan. In addition, more than 1,195 students, including 512 doctors evaluated only on theses, have been awarded medical doctorate degrees as well as more than 185 nurses awarded a Master's degree in nursing.

Five years ago, the new wards for inpatients were completed and became operational. The renewal of our outpatients facilities has been also completed recently. The Hospital now has 613 beds and 35 clinical services units to fulfill our aim to provide medical services which have strong points not only in Hamamatsu city and Shizuoka prefecture but also in Japan.

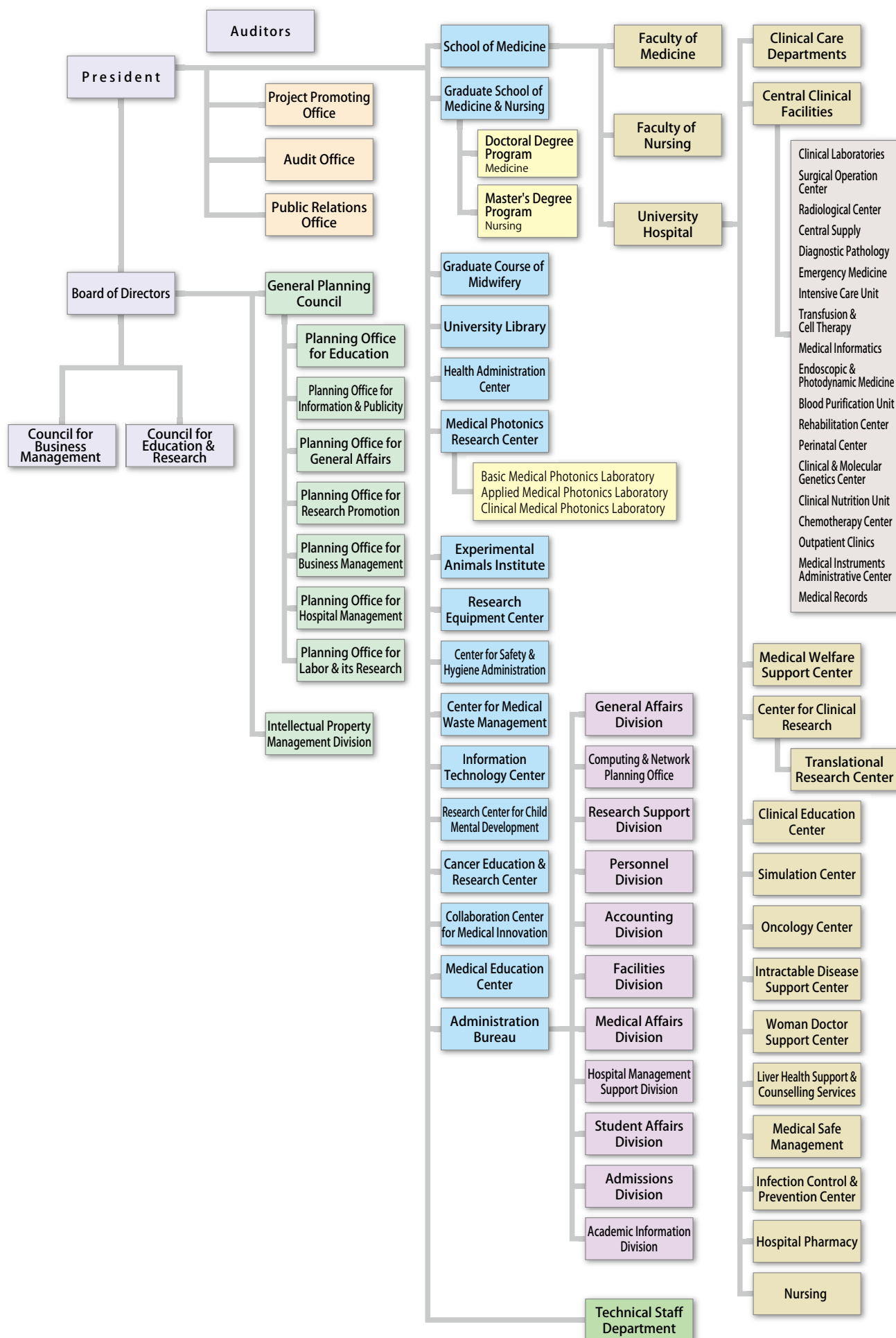
Finally, we have launched two research centers in 2011. One is the Medical Photonics Research Center and the other is the Collaboration Center for Medical Innovation. The former, established by the integration of two previous centers, Photon Medical Research Center and Molecular Imaging Frontier Research Center, was intended at further advancing the studies on medical application of light. The latter was newly set up to prompt collaborative research between our university and the industries. Continuous cooperation by various companies such as Hamamatsu Photonics K.K. (since 1991) has been quite valuable to start and maintain these centers.

Under my leadership, this university's overall goal in all these endeavors is to strengthen our contributing to the improvement of human health and well-being and to expand our efforts in the fields of education, clinical practice and research. I look forward to meeting these goals in the years ahead.



President
NAKAMURA, Satoshi

Hamamatsu University School of Medicine



ADMINISTRATIVE OFFICERS

President

NAKAMURA, Satoshi

Executive Directors/Vice-Presidents

(for Education & International Exchange) KOIDE, Yukio

(for Evaluation, Labor & Safety Control) SUZUKI, Osamu

Executive Director/Secretary General

(for Finance) MAEDA, Hiroshi

Executive Director

(for Administration & Collaboration Development) HIRUMA, Akira

Auditors

NISHIYAMA, Hitoshi

TSUDA, Hiroshi

Vice-Presidents

(for Information & Library) HARIYAMA, Takahiko

(for Research) MINOSHIMA, Shinsei

(for University Hospital) KONNO, Hiroyuki

Special Advisers to the President

(for Accreditation According to the Global Standards) MIYAJIMA, Hiroaki

(for Public Relations & Social Contribution) YAMAMOTO, Seiji

Council for Business Management

President NAKAMURA, Satoshi

Executive Director SUZUKI, Osamu

Executive Director MAEDA, Hiroshi

Executive Director HIRUMA, Akira

Vice-President KONNO, Hiroyuki

ITO, Shuji

UESUGI, Michiyo

SARUTA, Takao

SHINOHARA, Akira

NAGAI, Yoshiyuki

MIMURO, Kenichiro

MURAMOTO, Junko

Council for Education & Research

President NAKAMURA, Satoshi

Executive Director KOIDE, Yukio

Executive Director SUZUKI, Osamu

Executive Director MAEDA, Hiroshi

Director HARIYAMA, Takahiko

Head MIYAJIMA, Hiroaki

Head MINOSHIMA, Shinsei

Head WATANABE, Hiroshi

Head FUKUDA, Atsuo

Vice-President KONNO, Hiroyuki

Professor SASAKURA, Hiroyuki

Professor URANO, Tetsumei

Professor UMEMURA, Kazuo

Professor KANAYAMA, Naohiro

Professor NAGATA, Toshi

School of Medicine

Basic Sciences, Faculty of Medicine

Integrated Human Sciences	Ethics	Professor	MORISHITA, Naoki
	Psychology	Associate Professor	TANAKA, Satoshi
	Legal	Professor	OISO, Giichiro
	Mathematics	Professor	FURUYA, Jun
	Physics	Professor	SASAKURA, Hiroyuki
	Chemistry	Professor	FUJIMOTO, Chuzo
	Biology	Professor	HARIYAMA, Takahiko
	English	Professor	NAKAYASU, Minako
Anatomy	Biomedical Informatics	Professor	TANI, Shigeki
	Anatomy & Neuroscience	Professor	SATO, Kohji
	Cell Biology & Anatomy	Professor	SETOU, Mitsutoshi
	Neurophysiology	Professor	FUKUDA, Atsuo
	Medical Physiology	Professor	URANO, Tetsumei
	Molecular Biology	Professor	KITAGAWA, Masatoshi
	Biochemistry	Professor	MIURA, Naoyuki
	Tumor Pathology	Professor	SUGIMURA, Haruhiko
	Regenerative & Infectious Pathology	Professor	IWASHITA, Toshihide
	Pharmacology	Professor	UMEMURA, Kazuo
Infectious Diseases	Infection Control	Professor	HORII, Toshinobu
	Virology & Parasitology	Professor	SUZUKI, Tetsuro
	Community Health & Preventive Medicine	Professor	OJIMA, Toshiyuki
	Legal Medicine	Professor	WATANABE, Kanako

Faculty of Nursing

Basic Nursing	Professor	WATANABE, Yasuhide
	Professor	MIURA, Katsutoshi
	Professor	NAGATA, Toshi
	Professor	KATAYAMA, Harumi
Clinical Nursing	Professor	MORI, Keiko
	Professor	SATO, Naomi
	Professor	YASUDA, Takako
Community Nursing	Professor	TATSUMI, Asami
	Professor	SUZUKI, Mizue

Clinical Sciences, Faculty of Medicine

Internal Medicine 1 (Divisions of Gastroenterology, Nephrology & Neurology)	Professor	MIYAJIMA, Hiroaki
Internal Medicine 2 (Divisions of Endocrinology & Metabolism, Respiratory & Hepatology)	Professor	SUDA, Takafumi
Internal Medicine 3 (Divisions of Cardiology, Hematology & Rheumatology)	Professor	HAYASHI, Hideharu
Psychiatry	Professor	MORI, Norio
Surgery 1 (Divisions of Cardiovascular, Thoracic, General (Endoscopic) & Breast Surgery)	Professor	SHIYA, Norihiko
Surgery 2 (Divisions of Gastroenterological & Vascular Surgery)	Professor	KONNO, Hiroyuki
Neurosurgery	Professor	NAMBA, Hiroki
Orthopedic Surgery	Professor	MATSUYAMA, Yukihiro
Dermatology	Professor	TOKURA, Yoshiki
Urology	Professor	OZONO, Seiichiro
Ophthalmology	Professor	HOTTA, Yoshihiro
Otorhinolaryngology/ Head & Neck Surgery	Professor	MINETA, Hiroyuki
Radiology	Professor	SAKAHARA, Harumi
Anesthesiology & Critical Care Medicine	Professor	SATO, Shigehito
Obstetrics & Gynecology	Professor	KANAYAMA, Naohiro
Pediatrics	Professor	OGATA, Tsutomu
Dentistry & Oral & Maxillofacial Surgery	Professor	KATOU, Fuminori
Laboratory Medicine	Professor	MAEKAWA, Masato
Clinical Pharmacology & Therapeutics	Professor	WATANABE, Hiroshi
Emergency & Disaster Medicine	Professor	YOSHINO, Atsuto
Clinical Oncology	Professor	OHNISHI, Kazunori

Departments by Donation

Regional Medical Management Studies	Professor	YAMAOKA, Taiji
Child & Adolescent Psychiatry	Professor	SUGIYAMA, Toshiro
Medical Education	Associate Professor	IGARASHI, Hiroshi
Regional Neonatal-Perinatal Medicine	Associate Professor	IJIMA, Shigeo
Obstetrics, Gynecology & Family Medicine	Professor	SUGIMURA, Motoi
Family & Community Medicine	Professor	OKI, Yutaka
	Professor	INOUE, Machiko

Graduate Course of Midwifery

Professor	YASUDA, Takako
-----------	----------------

University Library

Director HARIYAMA, Takahiko

Cancer Education & Research Center

Head OHNISHI, Kazunori

Health Administration Center

Head MIYAJIMA, Hiroaki

Collaboration Center for Medical Innovation

Head YAMAMOTO, Seiji

Medical Photonics Research Center

Head MINOSHIMA, Shinsei

Basic Medical Photonics Laboratory	Professor	MINOSHIMA, Shinsei
	Professor	SETOU, Mitsutoshi
	Associate Professor	YAO, Ikuko
Applied Medical Photonics Laboratory	Professor	MAGATA, Yasuhiro
	Professor	YAMAMOTO, Seiji
	Professor	OKAZAKI, Shigetoshi
Clinical Medical Photonics Laboratory	Professor	OUCHI, Yasuomi

Medical Education Center

Head UMEMURA, Kazuo

Experimental Animals Institute

Head WATANABE, Hiroshi

Research Equipment Center

Head FUKUDA, Atsuo

Center for Safety & Hygiene Administration

Head SUZUKI, Osamu

Center for Medical Waste Management

Head FUJIMOTO, Chuzo

Information Technology Center

Head TANI, Shigeki

Research Center for Child Mental Development

Head MORI, Norio

Professor TAKEI, Noriyoshi

University Hospital

Director

KONNO, Hiroyuki

Vice-Directors

for Clinical Practice & Teaching	SUDA, Takafumi
for Management Reform	KANAYAMA, Naohiro
for Risk Management	MATSUYAMA, Yukihiro
for Patient Service	KUWABARA, Yumie

Clinical Care Departments Heads

General Medicine		KONNO, Hiroyuki
Internal Medicine 1	Professor	MIYAJIMA, Hiroaki
Division of Gastroenterology	Associate Professor	SUGIMOTO, Ken
Division of Nephrology	Senior Assistant Professor	YASUDA, Hideo
Division of Neurology	Professor	MIYAJIMA, Hiroaki
Internal Medicine 2	Professor	SUDA, Takafumi
Division of Endocrinology & Metabolism	Senior Assistant Professor	SASAKI, Shigekazu
Division of Respiratory	Professor	SUDA, Takafumi
Division of Hepatology	Senior Assistant Professor	KOBAYASHI, Yoshimasa
Internal Medicine 3	Professor	HAYASHI, Hideharu
Division of Cardiology	Professor	HAYASHI, Hideharu
Division of Hematology	Professor	OHNISHI, Kazunori
Division of Immunology & Rheumatology	Senior Assistant Professor	OGAWA, Noriyoshi
Psychiatry	Professor	MORI, Norio
Pediatrics	Professor	OGATA, Tsutomu
Surgery 1	Professor	SHIYA, Norihiko
Division of Cardiovascular Surgery	Professor	SHIYA, Norihiko
Division of Thoracic Surgery	Associate Professor	FUNAI, Kazuhito
Division of Breast Surgery	Senior Assistant Professor	OGURA, Hiroyuki
Division of General Surgery & Endoscopic Surgery	Senior Assistant Professor	WADA, Hidetoshi
Surgery 2	Professor	KONNO, Hiroyuki
Division of Esophago-Gastric Surgery	Professor	KONNO, Hiroyuki
Division of Colorectal Surgery	Professor	KONNO, Hiroyuki
Division of Hepato-Biliary-Pancreatic Surgery	Senior Assistant Professor	SAKAGUCHI, Takanori
Division of Vascular Surgery	Associate Professor	UNNO, Naoki
Neurosurgery	Professor	NAMBA, Hiroki
Orthopedic Surgery	Professor	MATSUYAMA, Yukihiro
Dermatology	Professor	TOKURA, Yoshiki
Urology	Professor	OZONO, Seiichiro

Ophthalmology	Professor	HOTTA, Yoshihiro
Otorhinolaryngology	Professor	MINETA, Hiroyuki
Obstetrics & Gynecology	Professor	KANAYAMA, Naohiro
Radiology	Professor	SAKAHARA, Harumi
Anesthesiology & Critical Care Medicine	Professor	SATO, Shigehito
Dentistry & Oral & Maxillofacial Surgery	Professor	KATOU, Fuminori
Rehabilitation	Professor	MIZUSHIMA, Takashi
Plastic & Reconstructive Surgery	Professor	FUKAMIZU, Hidekazu
Clinical Pharmacology & Therapeutics	Professor	WATANABE, Hiroshi
Diagnostic Pathology	Professor	BABA, Satoshi
Pediatric Surgery	Associate Professor	KAWAHARA, Hisayoshi

Central Clinical Facilities Heads

Clinical Laboratories	Professor	MAEKAWA, Masato
Surgical Operation Center	Professor	SATO, Shigehito
Radiological Center	Professor	SAKAHARA, Harumi
Central Supply	Professor	SHIYA, Norihiko
Diagnostic Pathology	Professor	BABA, Satoshi
Emergency Medicine	Professor	YOSHINO, Atsuto
Intensive Care Unit	Associate Professor	DOI, Matsuyuki
Transfusion & Cell Therapy	Professor	TAKESHITA, Akihiro
Medical Informatics	Professor	KIMURA, Michio
Endoscopic & Photodynamic Medicine	Professor	MINETA, Hiroyuki
Blood Purification Unit	Professor	KATO, Akihiko
Rehabilitation Center	Professor	MIZUSHIMA, Takashi
Perinatal Center	Professor	ITOH, Hiroaki
Clinical & Molecular Genetics Center	Professor	OGATA, Tsutomu
Clinical Nutrition Unit	Professor	KATO, Akihiko
Chemotherapy Center	Professor	OHNISHI, Kazunori

Outpatient Clinics	Professor	OZONO, Seiichiro
Medical Instruments Administrative Center	Professor	HAYASHI, Hideharu
Medical Records	Professor	HOTTA, Yoshihiro

Medical Welfare Support Center

Head KOBAYASHI, Toshihiko

Center for Clinical Research

Head WATANABE, Hiroshi

Clinical Education Center

Head SUDA, Takafumi

Simulation Center

Head IGARASHI, Hiroshi

Oncology Center

Head OHNISHI, Kazunori

Intractable Disease Support Center

Head MIYAJIMA, Hiroaki

Woman Doctor Support Center

Head KANAYAMA, Naohiro

Liver Health Support & Counselling Services

Head KOBAYASHI, Yoshimasa

Medical Safe Management

Head MATSUYAMA, Yukihiro

Infection Control & Prevention Center

Head MAEKAWA, Masato

Hospital Pharmacy

Head KAWAKAMI, Junichi

Nursing

Head KUWABARA, Yumie

STAFF

Classification		President	Executive Directors	Auditors	Professors	Associate Professors	Senior Assistant Professors	Assistant Professors	Total	Clerks & Technicians	Grand Total
Administration Bureau	Male	1	4	2					7	96	103
	Female									39	39
School of Medicine	Male				46	25	2	72	145	9	154
	Female				9	10	2	22	43	4	47
University Hospital	Male				4	11	35	41	91	149	240
	Female						3	6	9	600	609
Health Administration Center	Male						1		1		1
	Female									1	1
Medical Photonics Research Center	Male				5			5	10		10
	Female					2			2		2
Experimental Animals Institute	Male					1		1	2	2	4
	Female										
Research Equipment Center	Male									8	8
	Female					1			1	4	5
Center for Medical Waste Management	Male									2	2
	Female									1	1
Research Center for Child Mental Development	Male				1	3	1	5	10		10
	Female							2	2		2
Medical Education Center	Male										
	Female									1	1
Intellectual Property Management Division	Male							1	1		1
	Female										
Total	Male	1	4	2	56	40	39	125	267	266	533
	Female				9	13	5	30	57	650	707
	Total	1	4	2	65	53	44	155	324	916	1,240

Data on May 1, 2014

Classification	Senior Residents	Junior Residents	Total
Male	69	10	79
Female	30	13	43
Total	99	23	122

Data on May 1, 2014



SCHOOL OF MEDICINE

» Faculty of Medicine

The Faculty of Medicine aims to grow physicians and medical researchers who have extensive medical knowledge, skills and well-rounded humanity. The faculty strives to contribute to the development of medicine, medical care, and to the enhancement of human health and welfare.

Based on our University's policy, many excellent clinicians, who graduated from our University, are contributing to medical treatments both in Shizuoka Prefecture and nationwide. Our graduates are also engaging in state-of-the-art research at our University. New technologies are also being adopted by the Faculty in fields such as treatments of cancers and the development of advanced diagnostic techniques. In particular, The Photon Medical Research Center was established for the promotion of advanced studies in the field of medical photonics.

Finally, our graduates play active roles not only as clinicians, medical researchers and medical educators, but also as industrial physicians and medical welfare administrators.



» Faculty of Nursing

The Faculty of Nursing aims to grow talented people who play active roles in the fields of practical nursing skills, nursing research, and education locally and globally. The faculty strives to contribute to the development of the nursing science and enhancement of human health and welfare.

Students develop their scientific thinking and kind consideration for others during 4 years of student life. Graduates can continue their professional development in the Master's Program of the Graduate School of Nursing to pursue careers in nursing education and as researchers.



Admissions and the Present Number of Students

School			1st yr.	2nd yr.	3rd yr.	4th yr.	5th yr.	6th yr.	Total
Faculty of Medicine	Admission Quota 120(5)*	Male	74	83	83 (5)	76 (3)	81 (2)	74 (4)	471 (14)
		Female	43	43	38 (1)	45 (2)	39 (2)	33 (2)	241 (7)
	Capacity 705(25)*	Total	117	126	121 (6)	121 (5)	120 (4)	107 (6)	712 (21)
Faculty of Nursing	Admission Quota 70(10)**	Male	5	5	4 (1)	5 (1)			19 (2)
		Female	66	52	63 (8)	61 (10)			242 (18)
	Capacity 260(20)**	Total	71	57	67 (9)	66 (11)			261 (20)

(*) The numbers in parentheses indicate the quotas for 2nd-year transfer students not included in the total.

(**) The numbers in parentheses indicate the quotas for 3rd-year transfer students not included in the total.

Data on May 1, 2014

Research Students

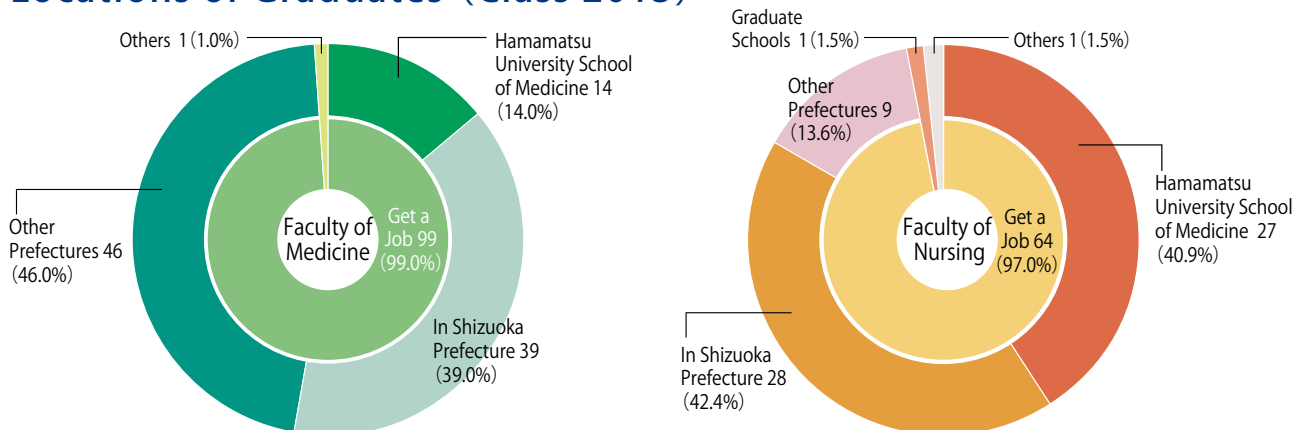
	2014
Male	4
Female	3

Data on May 1, 2014

Number of Graduates

Classification	Faculty of Medicine							Faculty of Nursing						
	1979~2008	2009	2010	2011	2012	2013	Total	1998~2008	2009	2010	2011	2012	2013	Total
Male	2,184	67	66	76	67	75	2,535	32	4	4	1	5	5	51
Female	782	35	31	26	26	25	925	723	65	65	67	67	61	1,048
Total	2,966	102	97	102	93	100	3,460	755	69	69	68	72	66	1,099

Locations of Graduates (Class 2013)



Success Rates in the National Medical Practitioners Qualifying Examination

Classification	New Graduates			Reexaminees			Total			National Ranking
	Applicants	Passed	Rate of Success	Applicants	Passed	Rate of Success	Applicants	Passed	Rate of Success	
104th 2010	102	96	94.1	4	2	50.0	106	98	92.5	24
105th 2011	97	94	96.9	8	6	75.0	105	100	95.2	8
106th 2012	102	100	98.0	3	3	100.0	105	103	98.1	2
107th 2013	93	87	93.5	2	1	50.0	95	88	92.6	28
108th 2014	100	99	99.0	7	6	85.7	107	105	98.1	6

Success Rates in the National Medical Examinations for Public Health Nursing and Nursing

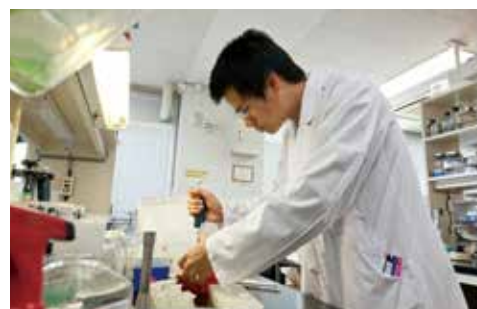
Public Health Nursing				Nursing			
Classification	Applicants	Passed	Rate of Success	Classification	Applicants	Passed	Rate of Success
96th 2010	70	69	98.6	99th 2010	62	62	100.0
97th 2011	69	67	97.1	100th 2011	59	59	100.0
98th 2012	69	67	97.1	101st 2012	58	58	100.0
99th 2013	73	72	98.6	102nd 2013	62	62	100.0
100th 2014	66	63	95.5	103rd 2014	57	57	100.0

GRADUATE SCHOOL

»» Doctoral Degree Program in Graduate School of Medicine

This doctoral program aims to grow both basic medical researchers and clinical scientists who will take the leadership on global bases. Based on taking a broad range of classes including “advanced photo-medicine”, the students for medical researchers should acquire high-level expert knowledge and skills to perform creative research.

On the other hand, the students for clinical scientists should acquire ability to apply the research mind to their own clinical practice.



»» Master's Degree Program in Graduate School of Nursing

This program aims to grow highly advanced nursing specialists, pedagogues, and researchers who have scientific thought, ability to notice and solve the problems, on the basis of fundamental capability for high-quality nursing knowledge and skills so far acquired.



Admissions and the Present Number of Students

Doctoral Degree Program

Major			1st yr.	2nd yr.	3rd yr.	4th yr.	Total
Advanced Photo Medicine	※Admission Quota 11	Male	—	—	—	9 (1)	9 (1)
		Female	—	—	—	9 (2)	9 (2)
	※Capacity 44	Total	—	—	—	18 (3)	18 (3)
Integrated Functional Medicine	※Admission Quota 5	Male	—	—	0	6 (2)	6 (2)
		Female	—	—	1	1 (1)	2 (1)
	※Capacity 20	Total	—	—	1	7 (3)	8 (3)
Frontier Medicine	※Admission Quota 8	Male	—	—	1 (1)	16	17 (1)
		Female	—	—	0	6 (1)	6 (1)
	※Capacity 32	Total	—	—	1 (1)	22 (1)	23 (2)
Infectious Disease Control & Preventive Medicine	※Admission Quota 6	Male	—	—	0	2	2
		Female	—	—	2 (1)	3	5 (1)
	※Capacity 24	Total	—	—	2 (1)	5	7 (1)
Medicine	※Admission Quota 30	Male	27 (2)	27 (3)	24	—	78 (5)
		Female	8	12 (1)	7	—	27 (1)
	※Capacity 120	Total	35 (2)	39 (4)	31	—	105 (6)

The numbers in parentheses indicate those students enrolled in October included in the total.

Data on May 1, 2014

※The upper limit of the entrant number before the fiscal year 2011

Master's Degree Program

Major			1st yr.	2nd yr.	Total
Nursing	※Admission Quota 16	Male	3	5 (3)	8 (3)
		Female	13	27 (13)	40 (13)
	※Capacity 32	Total	16	32 (16)	48 (16)

The number in parentheses indicates those students remaining in the same grade included in the total.

Data on May 1, 2014

Degrees Awarded

	1983~2007	2008	2009	2010	2011	2012	2013
Ph. D. (doctoral course)	515	35	28	27	26	24	28
Ph. D. (thesis only)	454	9	14	8	11	9	7
Master of Nursing (M.A.)	104	15	9	15	23	8	11

Data on May 1, 2014

Research Students

	2014
Male	28
Female	5

Data on May 1, 2014

GRADUATE COURSE OF MIDWIFERY

Graduate course of Midwifery was established in April 2008, with the aim of supporting local perinatal care and training the students to contribute to the development of Mother-Child health. This course graduates the midwives with high-quality skills in maternity treatments and practical abilities, in one-year of instruction based on "Women's lifetime health and gender rights".



Admissions and the Present Number of Students

Major	Admission Quota	Capacity	1st yr.
Graduate course of Midwifery	16	16	16

Data on May 1, 2014

Success Rates in the National Medical Examinations for Midwifery

Classification	Midwifery		
	Applicants	Passed	Rate of Success
95th 2012	15	15	100.0
96th 2013	16	16	100.0
97th 2014	16	16	100.0

INTERNATIONAL EXCHANGES

Universities with Agreements for Cooperation

University (COUNTRY)	Date of Agreement Signed	Cooperation Contents
China Medical University (CHINA)	1988. 4. 29	Sister School
Kyungpook National University School of Medicine (KOREA)	1992. 9. 7	Academic Exchange
Kyungpook National University College of Nursing (KOREA)	2005. 9. 23	
Shanghai Jiao Tong University School of Medicine (CHINA)	2000. 3. 24	Academic Exchange
Faculty of Medicine, Albert-Ludwigs University of Freiburg (GERMANY)	2003. 6. 30	Academic Exchange
Henan College of Traditional Chinese Medicine (CHINA)	2003.12. 8	Academic Exchange
Medical University of Bialystok (POLAND)	2004. 4. 19	Academic Exchange
University of Dhaka (BANGLADESH)	2004.11.12	Academic Exchange
Shahjalal University of Science and Technology (BANGLADESH)	2004.11.12	Academic Exchange
Bangabandhu Sheikh Mujib Medical University (BANGLADESH)	2004.11.12	Academic Exchange
Guangxi Medical University (CHINA)	2004.11.21	Academic Exchange
Medical University of Warsaw (POLAND)	2010. 4. 1	Academic Exchange
Medical University of Lublin (POLAND)	2010. 4. 5	Academic Exchange
Heinrich Heine University Düsseldorf (GERMANY)	2012. 8. 9	Academic Exchange
University of Hawaii, John a. Burns School of Medicine (U.S.A.)	2012. 9. 6	Academic Exchange
Hitit University (TURKEY)	2013.12.17	Academic Exchange

Data on May 1, 2014

International Students

Country	Graduate Students		Total
	Government	Private	
China		7	7
Bangladesh		5	5
Vietnam	1		1
Pakistan	1	1	2
India		3	3
Poland	1		1
Total	3	16	19

Data on May 1, 2014



The 13th Hamamatsu-Kyungpook Joint Medical Symposium

International Residence

Classification	Building	Single Type		Family Type	
Architectural Area		206㎡		147㎡	
Total Building Area		554㎡		567㎡	
Room Type (Area)	Single Rooms (14㎡)	20		Couple Rooms (40㎡)	6
	Meeting Room (19㎡)	1		Family Rooms (59㎡)	4



International Residence

JOINT-USE FACILITIES FOR EDUCATION AND RESEARCH

» Health Administration Center

HEAD MIYAJIMA, Hiroaki

This Center contributes to the maintenance and promotion of the health of students and the staff, and thus to the achievement of student education and various activities of the university staff. We also conduct annual medical checks and medical consultations on both physical and mental health, as well as investigations of health problems.



» Medical Photonics Research Center

HEAD MINOSHIMA, Shinsei
VICE-HEAD MAGATA, Yasuhiro

The Medical Photonics Research Center was launched in 2011 by the merger of two erstwhile centers, Photon Medical Research Center and Molecular Imaging Frontier Research Center. Here, a plethora of research projects exploring the medical utility of light and electromagnetic waves are being undertaken. Ongoing projects include: (i) pursuit of the mechanism of life phenomena in every layer from cells to individuals using light and molecular imaging, (ii) development of novel probes (tracers) and diagnostic tools for disease prognosis, (iii) use of “omics” technologies to unveil the etiology of various diseases, (iv) unraveling of enigmas of brain functions and pathophysiology, and (v) development of photo dynamic treatment methods for cancer therapy. The Department of Medical Spectroscopy is endowed by Hamamatsu Photonics K.K.



» Experimental Animals Institute

HEAD WATANABE, Hiroshi

The Experimental Animals Institute established in 1983 is providing researchers with subjects for animal experiments in basic medical research. The institute is also contributing to education through classes on animal experimentation and graduation-thesis research.

In addition, laboratory animal science is being promoted by developing many mutant mouse strains as animal models for human diseases using originally developed methods, and providing them to researchers.



» Research Equipment Center

HEAD FUKUDA, Atsuo

The Research Equipment Center directly contributes to the advancement of education and research in biomedical sciences. The Center consists of 16 laboratories including RI facilities. The staff of the Center is experts in managing sophisticated analytical equipment and collaborate with researchers. In the RI facilities, technical training for the safe handling of radioisotopes is conducted.

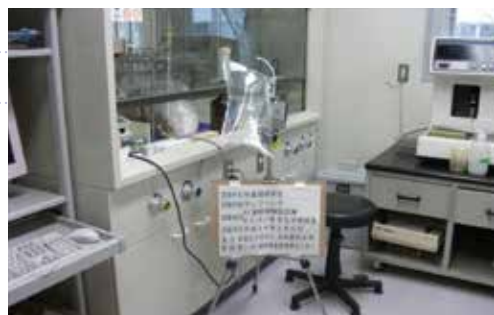


Center for Safety & Hygiene Administration

HEAD SUZUKI, Osamu

The Center was founded in April 2003. The Center's primary missions are to draft plans to achieve projects concerning the University's hygiene and safety and to seek the thorough implementation of the guidelines for the prevention of environmental pollution, health hazards, accidents and disasters related to the University's educational and research activities.

The important objectives are: to assess the working environments according to the Industrial Safety and Health Law and other related rules and regulations, to promote the safety and health of workers and to secure a safer and healthier working environment.



Center for Medical Waste Management

HEAD FUJIMOTO, Chuzo

Trash must be separated according to the trash categories specified in "The Guide to Separating Trash", which is available at the web site of this center. Biohazardous waste has to be put into a properly labeled plastic container or bag. Carry-in wastes may be brought to this center or the collection station. Lectures on the separation and disposal of trash are given by the staff members of this center. Wastewater from the University Hospital and laboratories is treated with a sewage treatment plant placed at this center. Processes used for wastewater treatment include settlement in a pool, activated sludge treatment with anaerobic and aerobic bacteria, sedimentation, coagulation, and filtration with sand and activated carbon. Before the discharge of the treated water into the natural environment, examinations are carried out to determine whether adverse environmental effects are eliminated from the effluent.



Information Technology Center

HEAD TANI, Shigeki

The information Technology Center provides the information infrastructure of our university. It supports the network of the university, Electronic Mail System, a Web server, the information technology use including the intermediation of the document retrieval.

I aim at wireless LAN setting it up sequentially on a campus in the required place. Practice and the learning function of the information technology aim for the interactive use among learners with a teacher. The center aims for contributing the convenience of the user as much as possible as a university.



Research Center for Child Mental Development

HEAD MORI, Norio

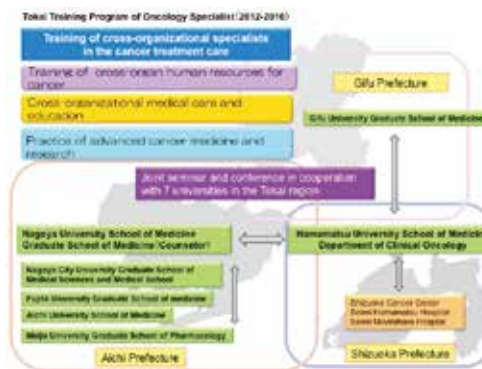
The Center was founded in 2006 as a joint center with the participation of Osaka University and Hamamatsu University School of Medicine, followed by the welcomed participation of Kanazawa University in 2008 and of University of Fukui and Chiba University in 2011. As a leading institute in the interdisciplinary research for child development, the major goals of the Center include investigation of biological, medical, and psychosocial backgrounds of abnormalities in cognitive and emotional status during childhood, and development of efficient educational and clinical intervention methods that are helpful to children with developmental disorders. It is also our mission here at the Center to educate professionals such as teachers and clinical psychologists so as to allow them to support their disabled children more sufficiently in association with the United Graduate School of Child Development, which consists of the five Universities mentioned above.



» Cancer Education & Research Center

HEAD OHNISHI, Kazunori

The mission of the Cancer Education and Research Center is to train physicians who will become leaders in comprehensive cancer therapy, and also to promote advanced research in cancer. This center was founded in October 2007, and opened graduate courses for training cancer professionals in cooperation with Tokai Gann (Cancer) Professional Plan. This program aims at establishing medical oncology teams matching the global standard, and its main institution is Nagoya University School of Medicine. The graduate course consists of 3 courses, clinical oncology, radiotherapy, and cancer pharmacology. An intensive course runs concurrently with the graduate course, in which senior physicians can learn the practice of modern cancer management.



» Collaboration Center for Medical Innovation

HEAD YAMAMOTO, Seiji

The Collaboration Center for Medical Innovation was established in April 2011, as a window of one-stop service (single point of contact) for industry-academic and medical-engineering collaboration. The Center includes the PET-CT building and the cyclotron building, and manages the imaging devices including MRI, CT, and PET/SPECT/CT scanners for experimental studies, and PET/CT scanner for clinical studies in our university. The Center also works as the core facility for “Hamamatsu Medical and Engineering Technology Innovation Core (HaMTIC)” which develops a local industry-academic collaboration to produce new medical devices based on the optical and imaging technology.



» Medical Education Center

HEAD UMEMURA, Kazuo

Medical Education Center was founded in April 2012. The Center manages and organizes the education systems for medical school of Hamamatsu University School of Medicine, including curriculums and evaluation systems especially for PBL (Problem Based Learning), OSCE (Objective Structured Clinical Examination, including Advanced OSCE), CBT (Computer Based Testing), clinical clerkship, and general remarks of medicine. The mission of the Center is to keep our educational systems world standard level and to improve them progressively.



UNIVERSITY LIBRARY

Library Opening Hours

Monday to Friday 9:00 ~ 20:00

Saturday & Sunday 10:00 ~ 17:00

24-hour access to the library is available to students and faculty members by registering ID cards.



Utilization

Classification		Intramural	Extramural	Total
The Number of Visitors	Regular Hours	76,119	2,011	78,130
	After Hours	40,402	327	40,729
	Total	116,521	2,338	118,859

Classification	Books	Journals	AV Materials
The Number of Items Borrowed	7,103	383	160

Classification	Requests Accepted	Requests Made to Outside
Copying Service	3,883	2,037

Fiscal Year 2013



Library Collection

Classification	Japanese	English	Total
Books	57,588	32,183	89,771
Journals	1,244	1,084	2,328
AV Materials	1,173		1,173
eBooks	80	35	115

Data on March 31, 2014



Books and Journals Accepted

Classification	Japanese	English	Total
Books	2,006	260	2,266
Journals	362	77	439
AV Materials	93		93
Electronic Journals	6,611		6,611
eBooks	80	27	107

Fiscal Year 2013



UNIVERSITY HOSPITAL

Clinical Activities

Clinical Care Departments		Inpatients		Outpatients	
		Total	Average per Day	Total	Average per Day
Internal Medicine 1	Gastroenterology	9,226	25.3	10,929	44.8
	Nephrology	4,594	12.6	6,113	25.1
	Neurology	2,384	6.5	3,424	14.0
Internal Medicine 2	Endocrinology & Metabolism	3,126	8.6	20,999	86.1
	Respiratology	9,779	26.8	11,728	48.1
	Hepatology	3,312	9.1	7,212	29.6
Internal Medicine 3	Cardiology	7,241	19.8	12,746	52.2
	Hematology	9,530	26.1	8,514	34.9
	Immunology & Rheumatology	1,442	4.0	4,421	18.1
Psychiatry		13,185	36.1	18,441	75.6
Pediatrics		13,110	35.9	14,913	61.1
Surgery 1	Cardiovascular Surgery	7,328	20.1	2,514	10.3
	Thoracic Surgery	3,078	8.4	1,594	6.5
	Breast Surgery	1,106	3.0	5,767	23.6
	General Surgery & Endoscopic Surgery	1,964	5.4	1,828	7.5
Surgery 2	Esophago-Gastric Surgery	5,490	15.0	5,147	21.1
	Colorectal Surgery	4,408	12.1	4,511	18.5
	Hepato-Biliary-Pancreatic Surgery	4,433	12.1	2,562	10.5
	Vascular Surgery	4,285	11.7	4,161	17.1
Neurosurgery		8,474	23.2	7,683	31.5
Orthopedic Surgery		15,161	41.5	22,241	91.2
Dermatology		4,175	11.4	21,166	86.7
Urology		8,459	23.2	16,197	66.4
Ophthalmology		5,522	15.1	19,571	80.2
Otorhinolaryngology		10,026	27.5	17,822	73.0
Obstetrics & Gynecology		12,662	34.7	16,853	69.1
Radiology		1,108	3.0	7,050	28.9
Anesthesiology & Critical Care Medicine		114	0.3	3,011	12.3
Dentistry & Oral & Maxillofacial Surgery		3,308	9.1	10,554	43.3
Rehabilitation		—	—	4,369	17.9
Plastic & Reconstructive Surgery		4,735	13.0	5,977	24.5
Clinical Pharmacology & Therapeutics		88	0.2	690	2.8
Pediatric Surgery		40	0.1	391	1.6
Emergency Medicine		1,261	3.5	3,864	15.8
Total		184,154	504.5	304,963	1,249.8

Fiscal Year 2013

Number of Clinical Lab Tests						
Test Item	Urinalysis and Other Body Fluids	Hematology	Clinical Chemistry	Pathology	Physiology	Collection of Blood and Other Body Fluids
Number	102,418	311,719	2,290,626	14,244	179,695	84,265
Test Item	Endocrinology	Immunology	Microbiology	Endoscopy	Others	Total
Number	65,505	301,722	27,178	10,599	38,885	3,426,856

Fiscal Year 2013

Number of Surgical Operations & Anaesthesias	
Number of Operations	Total
	5,734
Number of Anaesthesia	Total
	5,734

Fiscal Year 2013

Number of Emergency Cases						
Causes						Total
Diseases	Injuries				Pregnancy	
	Accidents			Total		
	Traffic Accidents	Poisoning	Others			
5,966	364	76	1,142	1,582	709	8,257

Fiscal Year 2013

Number of X-Ray Examinations						
Method		X-Ray Radiography	X-Ray Fluoroscopy	X-Ray CT	M R I	Total
Number of Patients	Inpatients	34,754	1,769	6,676	2,445	45,644
	Outpatients	35,758	3,711	12,796	6,571	58,836
	Total	70,512	5,480	19,472	9,016	104,480

Fiscal Year 2013

Number of Pathological Autopsy			
	Male	Female	Total
Patients Who Died at our Hospital	199	107	306
Number Subjected to Autopsy	18	5	23
Autopsy Rate (%)	9.0	4.7	7.5
Autopsies Entrusted from Outside	1	0	1

Fiscal Year 2013

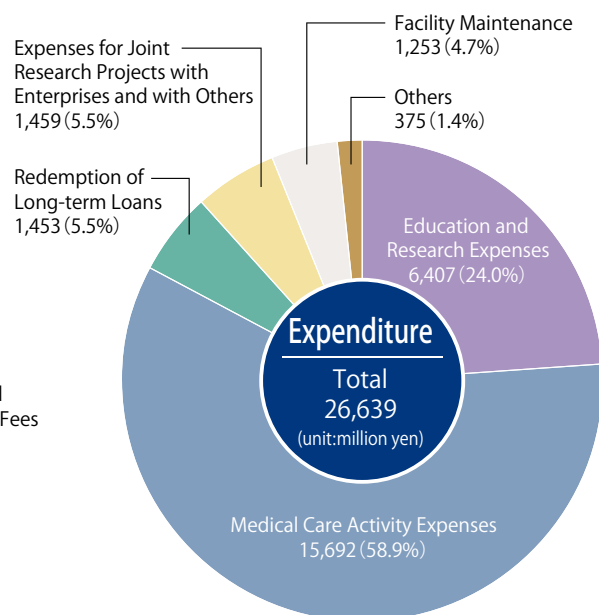
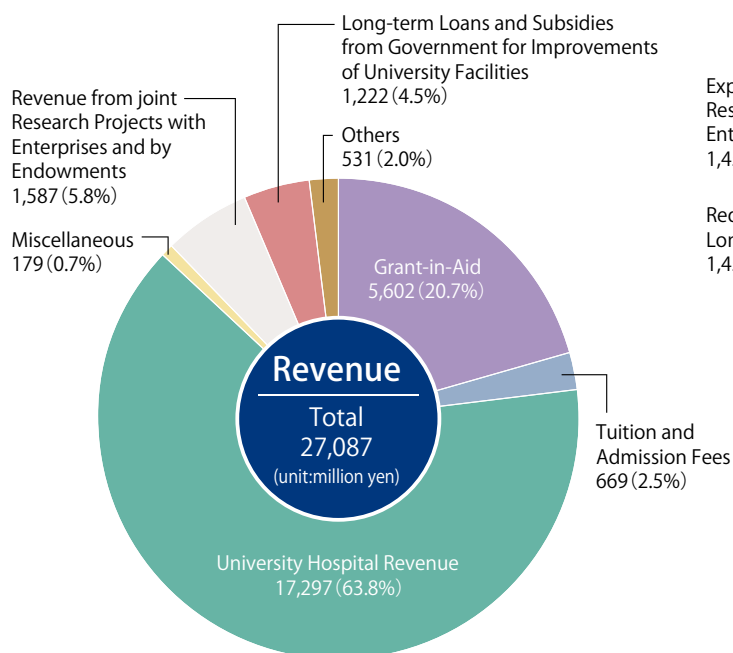
Number of Births	
	Total
Normal Deliveries	503
Abnormal Deliveries	247
Total	750

Fiscal Year 2013



ACCOUNTS & GRANTS

Fiscal Year 2013



Research Grants

Grant-in-Aid for Scientific Research

Subject for Research	Number	Amount of Money (Unit: thousand yen)
Scientific Research on Innovative Areas	6	83,850
Scientific Research (A)	1	14,820
Scientific Research (B)	23	130,000
Scientific Research (C)	99	159,900
Challenging Exploratory Research	33	44,395
Young Scientists (S)	0	0
Young Scientists (A)	1	8,840
Young Scientists (B)	47	71,110
Research Activity Start-up	4	5,200
JSPS Fellows	1	1,100
Encouragement of Scientists	7	4,200
Total	222	523,415

The grants above include all overhead expenses.

Fiscal Year 2013

Grant from Outside the University

Classification	Number	Amount of Money (Unit: thousand yen)
Health and Labour Sciences Research Grants	8	109,770
Endowment	654	645,626
Trust Research	6,777	556,955
Joint Research	49	48,665

Fiscal Year 2013

CAMPUS MAP



Land Area	302,188㎡
Building Area	40,823㎡
Total Building Area	159,073㎡

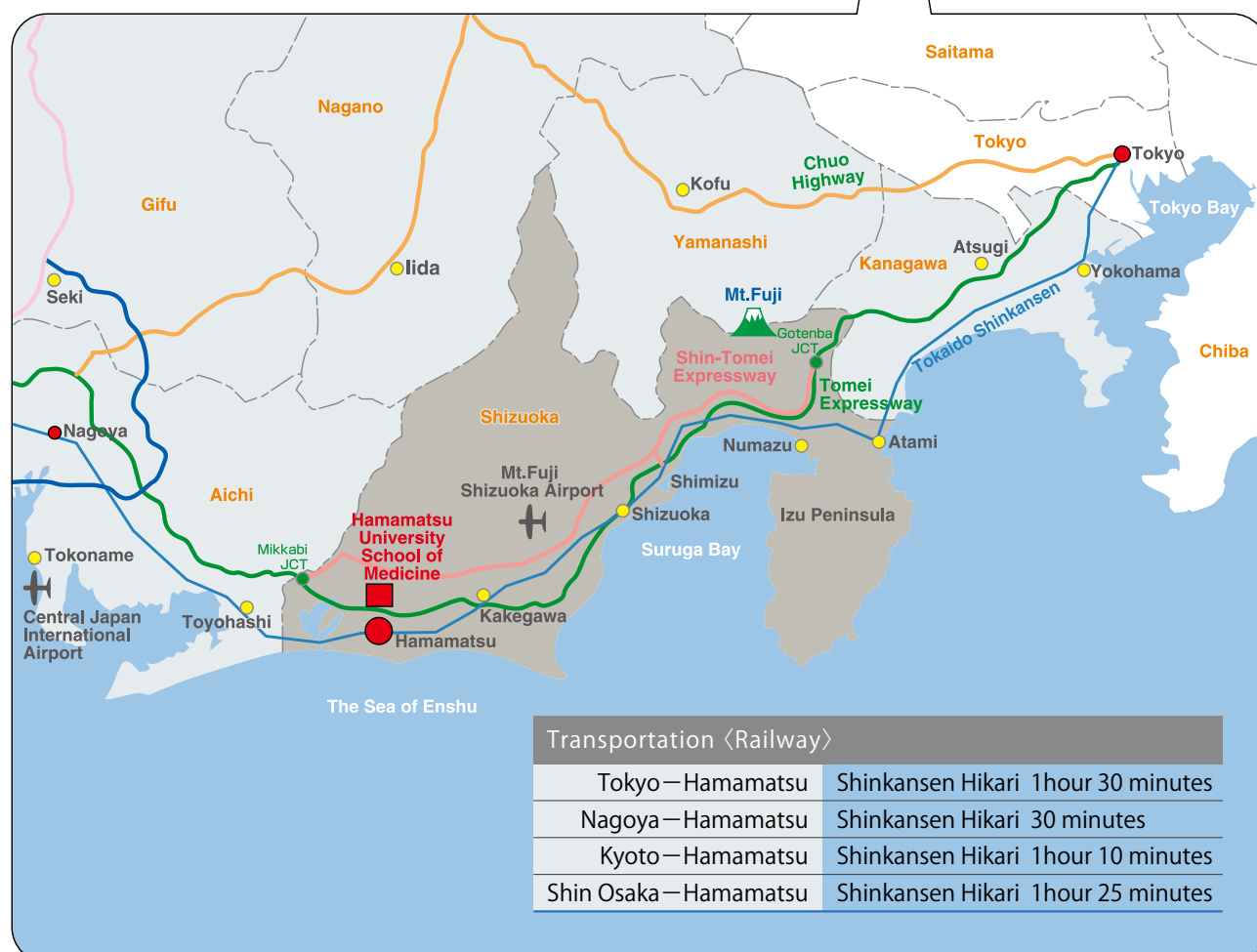
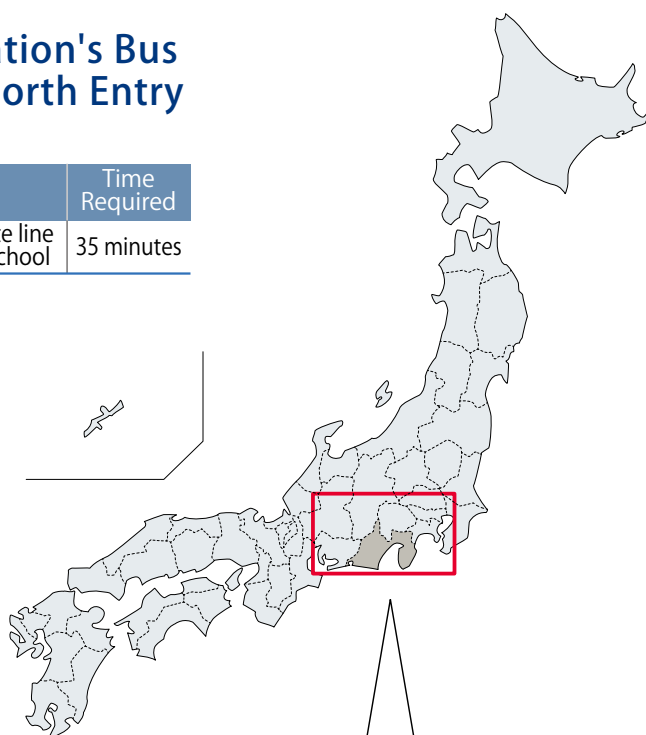
① Headquarters Building	⑮ Gymnasium
② University Hospital	⑯ Martial Arts Hall
③ Clinical Lecture Building	⑰ Kyudo Ground
④ Translational Research Center	⑱ Swimming Pool
⑤ Collaboration Center for Medical Innovation PET-CT Facilities	⑲ Tennis Court
⑥ Nursing Faculty Building	⑳ Soccer/Rugby Ground
⑦ Basic and Clinical Research Building Annex	㉑ Baseball Ground
⑧ Basic and Clinical Research Building	㉒ Center for Medical Waste Management
⑨ Experimental Animals Institute	㉓ International Residence
⑩ Educational Building	㉔ University Residence
⑪ Welfare Facilities	㉕ Cenotaph
⑫ University Library	㉖ Funaokayama University Residence
⑬ Medical Photonics Research Center	㉗ Handayama University Residence
⑭ Collaboration Center for Medical Innovation Cyclotron Facilities	㉘ Handayama Hall

LOCATION MAP

Hamamatsu University School of Medicine is located approximately 10.6km north of Hamamatsu Station.

Commuting Guide at the Station's Bus Terminal Located near the North Entry of Hamamatsu Station

Entetsu Bus	Bus Terminal	Route Number	Route Name	Time Required
	Stop 13	50	Shiyakusho Yamanote line bound for Medical School	35 minutes





National University Corporation
**Hamamatsu
University
School of Medicine**

431-3192
1-20-1 Handayama, Higashi-ku, Hamamatsu,
Shizuoka, Japan
Tel. +81-53-435-2111
<http://www.hama-med.ac.jp/>

