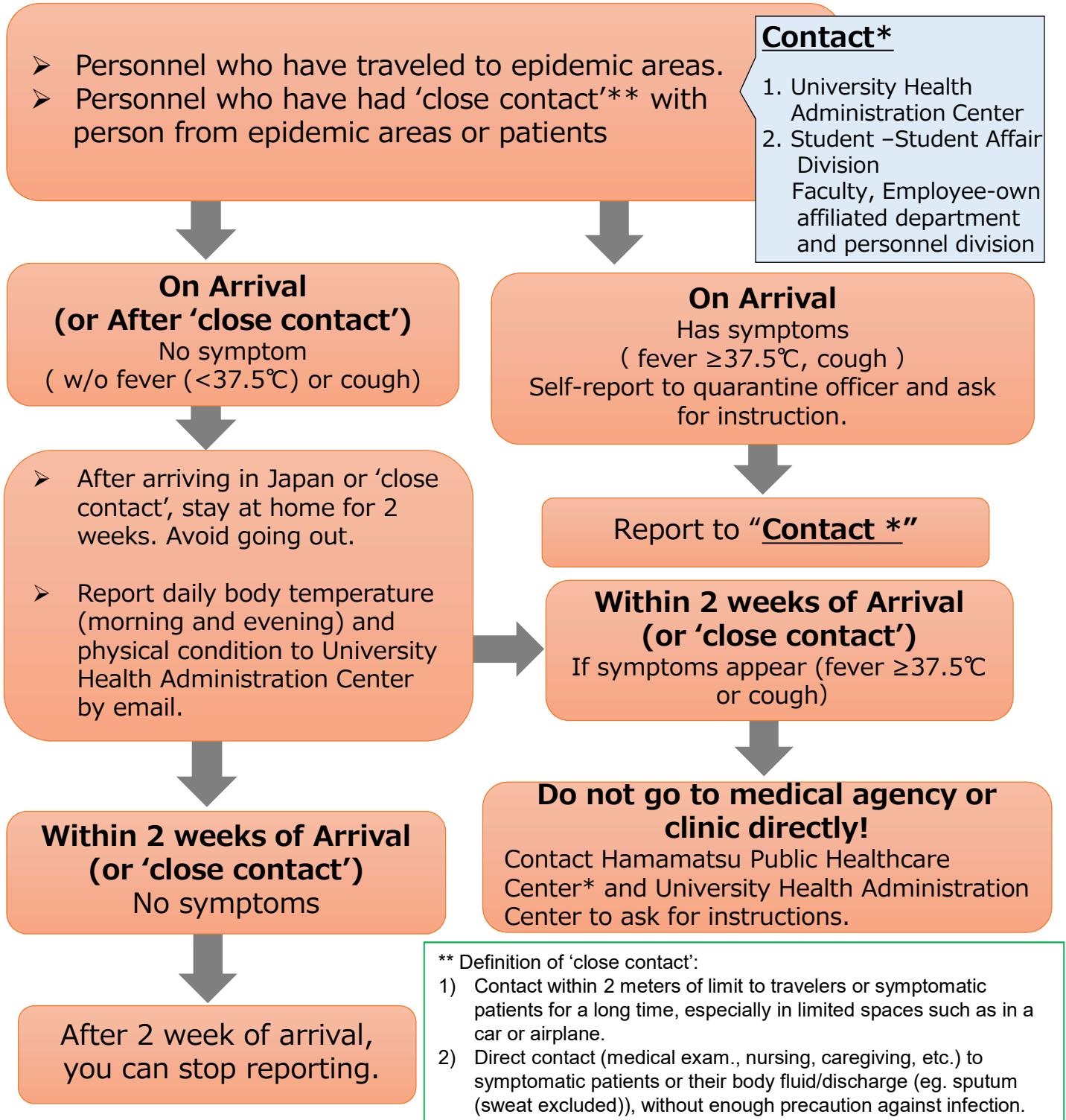


Student, Faculty, Employee who have traveled to epidemic areas or have 'close contact' with travelers from epidemic areas

3.5.2020 HUSM

Novel Coronavirus Infection is quickly spreading. Personnel who falls under categories below, please contact the "**Contact**", so we can control the infectious disease thoroughly within the University



* Health Administration Center (e-mail: hac@hama-med.ac.jp, TEL: 053-435-2156 (weekdays only))
Student Affair Division (e-mail: kgs@hama-med.ac.jp, TEL:053-435-2202 (weekdays only))
Personnel Division (e-mail: ssy@hama-med.ac.jp, TEL: 053-435-2119 (weekdays only))
Hamamatsu Public Healthcare center (TEL: 053-453-6118)