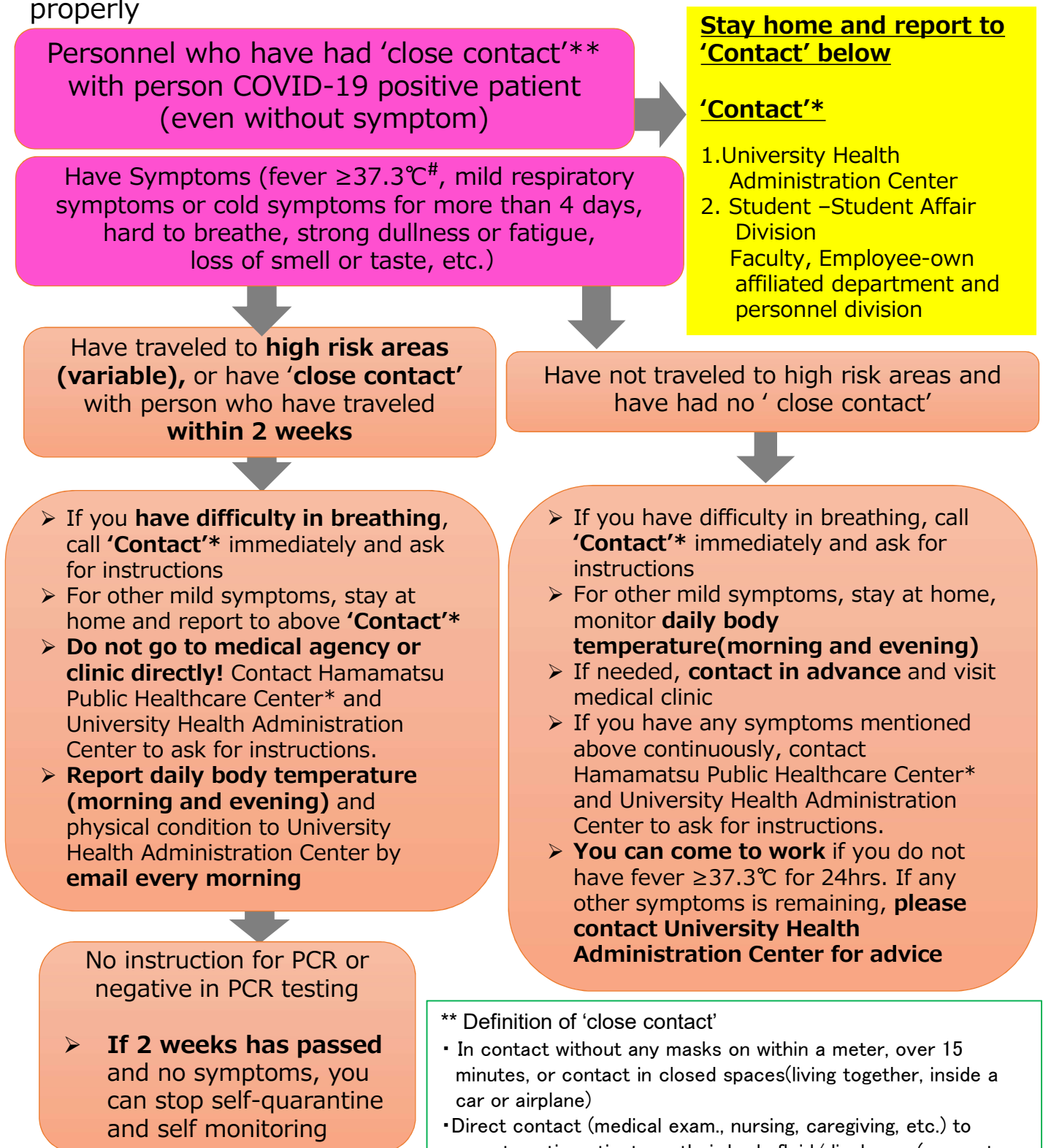


Student, Faculty who have 'close contact' with COVID-19 patient or has symptoms(fever etc.)

7.9.2020 HUSM

Follow the flowchart below, and please contact the "**Contact**" swiftly and properly



Body temperature should be measured without taking any antipyretic

** Definition of 'close contact'

- In contact without any masks on within a meter, over 15 minutes, or contact in closed spaces (living together, inside a car or airplane)
- Direct contact (medical exam., nursing, caregiving, etc.) to symptomatic patients or their body fluid/discharge (eg. sputum (sweat excluded)), without enough precaution against infection

* Health Administration Center (e-mail: hac@hama-med.ac.jp, TEL: 053-435-2156 (weekdays only))

Student Affair Division (e-mail: kgs@hama-med.ac.jp, TEL: 053-435-2202 (weekdays only))

Personnel Division (e-mail: ssy@hama-med.ac.jp, TEL: 053-435-2119 (weekdays only))

Hamamatsu Public Healthcare center (TEL: 0120-368-567)